

Polysafe™ Stone & Wood

RRL Pendulum Test
36+
Sustainable Slip Resistance

P3
AS 4586



SAFETY FLOORING FOR
**CONTEMPORARY
SPACES**

CREATE SPACES WITHIN SPACES

CONTEMPORARY DESIGN

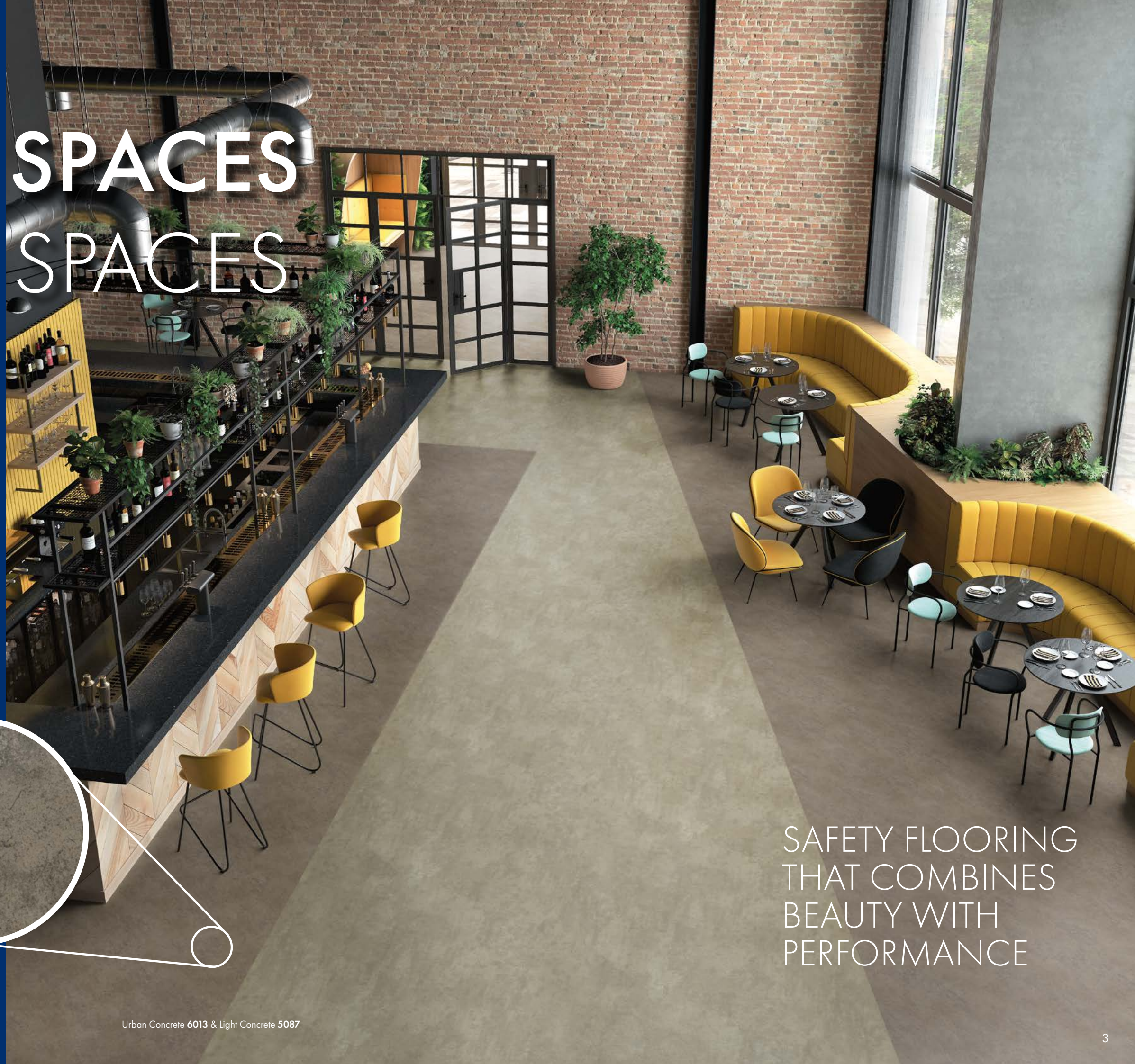
Polysafe Stone & Wood fx is a distinctive collection developed to capture the beauty and authenticity of material surfaces with the built-in reassurance of sustainable wet slip resistance. This heavy-duty vinyl sheet safety flooring features 34 commercial floor designs with high clarity stone, concrete and wood effects across a range of warm and cool hues.

The Polysafe Stone & Wood fx collection presents endless possibilities to realise a safe, contemporary interior space. Create unique flooring designs or multi-functional zoning with the complementary stone and wood shades.

ENGINEERED FOR SAFETY

Virtually invisible aluminium oxide particles are integrated throughout the performance layer to provide a safety flooring which is both functional and beautiful.

These carborundum-free safety particles ensure that Polysafe Stone & Wood fx offers full HSE compliance and sustainable wet slip resistance, achieving **36+** on the pendulum wet tests.



SAFETY FLOORING
THAT COMBINES
BEAUTY WITH
PERFORMANCE

Spaces to WORK

FRONT OF HOUSE SAFETY ASSURANCE

Contrasting stone and wood effect flooring beautifully demonstrates how design and function go hand in hand. The perfect solution for busy retail interiors where the flooring aesthetic and safety performance are a priority.

Protect customers and employees in environments with heavy footfall such as entrances and walkways by specifying a safety floor that can handle potential slip risks from trafficked contaminants and daily spillages.

STUNNING
SCHEMES
WITH SAFETY
ASSURED

Jurassic Stone 6011 & Roasted Limed Ash 3375

Spaces to LIVE

CALM AND WELCOMING TONES

The variety of contemporary stone designs and warm wood effects can be used individually for a homely interior or in combination to create harmonious zones in larger spaces.

Attractive designs combined with safety flooring properties that can withstand daily spillages and contaminants make this Polysafe Stone & Wood fx collection perfect for any shared living, housing or commercial setting.

FUNCTIONAL ZONES FOR SAFE OPEN PLAN LIVING

Spaces to HEAL

HYGIENIC AND LOW MAINTENANCE

Soothing shades of warm concrete and wood give hospital interiors a fresh and non-clinical feel to foster comfortable environments that both patients and staff find uplifting and positive.

Maintaining the look of a floor covering is vital, particularly in highly visible areas which need to be kept hygienic and safe. The tried and trusted Polysafe PUR reinforcement assures both ease of maintenance and optimum appearance levels for design led front of house areas.

WELCOMING
& HYGIENIC
WITH BUILT-IN
SLIP RESISTANCE

Dark Concrete 5089 & American Oak 3387





Spaces to ENJOY

IDEAL FOR LARGE SCALE AREAS

For those seeking contemporary, design-led interiors, the stunning urban and light concrete reproductions allow complete design freedom, meeting all safety and maintenance requirements for large scale customer facing spaces.

Ideally suited to retail and leisure interiors with heavy commercial footfall, Polysafe Stone & Wood fx can be laid throughout a facility, including areas that have exterior access or pose a risk of spillage.

AMBIENT BACKDROPS FOR DINNER & DRINKS



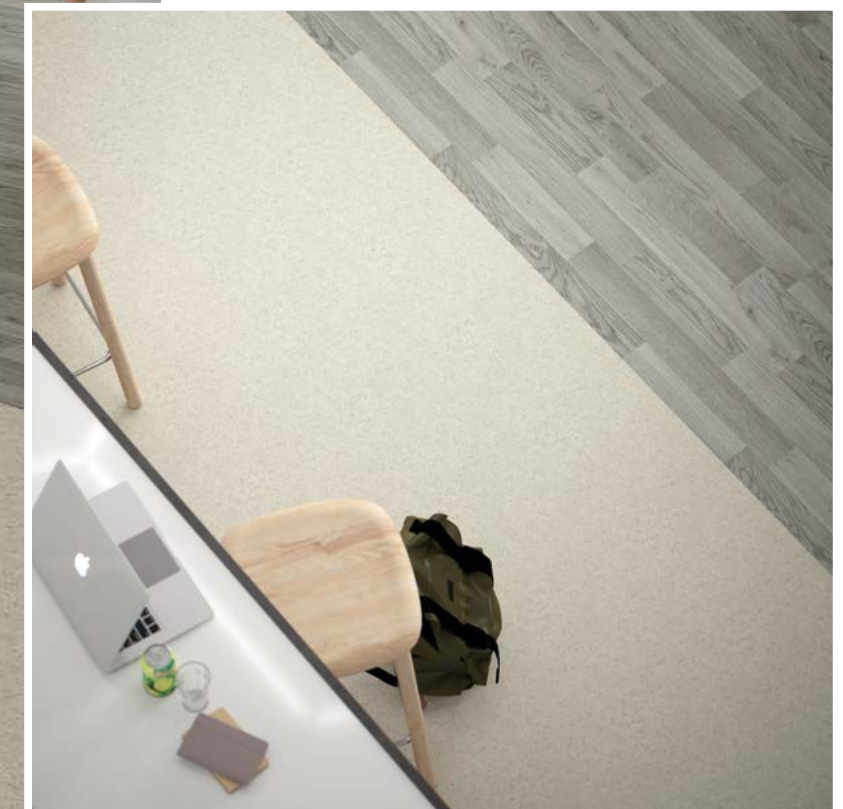
Spaces to LEARN

POTENTIAL SPILLAGES

Polysafe Stone & Wood fx has the assurance of sustainable wet slip resistance throughout it's guaranteed life and is suitable for large scale educational interiors, particularly in busy food serving areas where there is a risk of spillages.

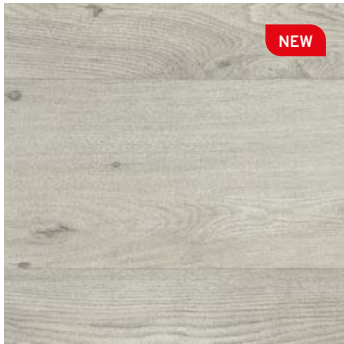
Create pleasant, comfortable and practical environments with a choice of calming tonal greys across the stone and wood floor designs to guide users with wayfinding or functional zoning.

MULTI-FUNCTIONAL
SOLUTIONS TO
STUDY, EAT OR
SIMPLY MEET





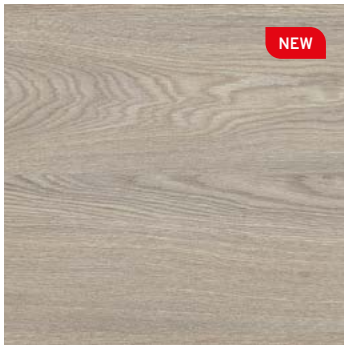
Parish Oak Parquet **3391**
plank w/l: 76.2 x 288.6mm
w/r 9841 LRV 32



Blanched Oak **3397**
plank w/l: 200 x 1000mm
w/r 3113 LRV 42



Eton Oak Parquet **3392**
plank w/l: 76.2 x 288.6mm
w/r 9822 LRV 24



Newport Oak **3394**
plank w/l: 167 x 1500mm
w/r 9838 LRV 30



Oslo Oak **3396**
plank w/l: 167 x 1500mm
w/r 9829 LRV 32



Sun Bleached Oak **3372**
plank w/l: 200 x 1500mm
w/r 3372 LRV 31



Silver Oak **3357**
plank w/l: 83 x 333/666mm
w/r 3237 LRV 23



Oiled Oak **3374**
plank w/l: 166 x 1500mm
w/r 3374 LRV 37



Roasted Lined Ash **3375**
plank w/l: 166 x 1500mm
w/r 9831 LRV 30



Tropical Pine **3376**
plank w/l: 166 x 1500mm
w/r 9822 LRV 22



American Oak **3387**
plank w/l: 100 x 1000mm
w/r 3380 LRV 37



Rustic Oak **3337**
plank w/l: 83 x 333/666mm
w/r 3330 LRV 26



Classic Oak **3107**
plank w/l: 166 x 1500mm
w/r 3330 LRV 29



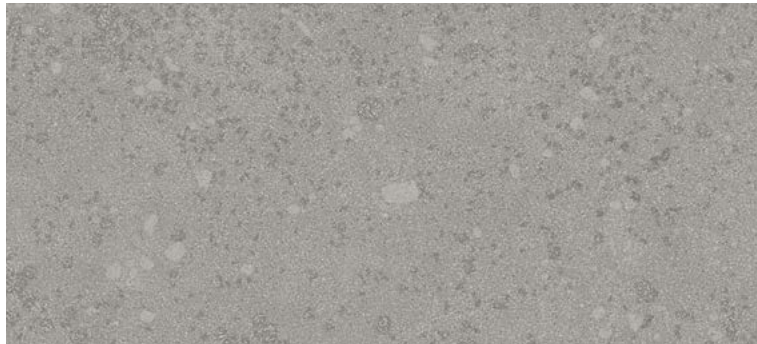
European Oak **3347**
plank w/l: 100 x 1000mm
w/r 3340 LRV 23



Aged Oak **3373**
plank w/l: 200 x 1500mm
w/r 9824 LRV 9



Nero Oak **3371**
plank w/l: 125 x 1000mm
w/r 9842 LRV 7



Dove Slate **6012**
NCS S 3502-G

w/r 6012
LRV 35



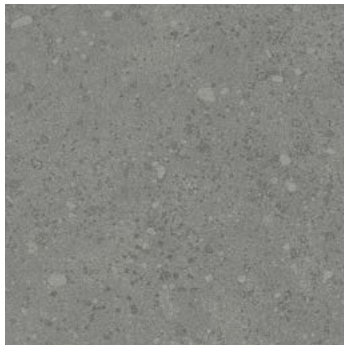
Urban Concrete **6013**
NCS S 5502-Y

w/r 6013
LRV 24



Jurassic Stone **6011**
NCS S 4500-N

w/r 6011
LRV 22



Natural Slate **6014**
NCS S 4502-G

w/r 6014
LRV 22



Dark Concrete **5089**
NCS S 5502-Y

w/r 5089
LRV 23



Flagstone Grey **5091**
NCS S 4005-Y50R

w/r 5091
LRV 35



Clay Stone **5092**
NCS S 5005-Y80R

w/r 5092
LRV 25



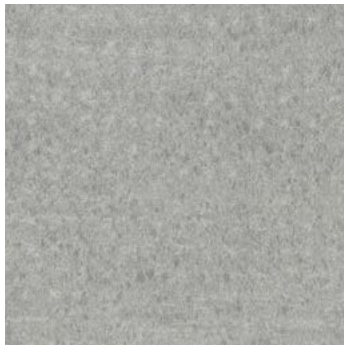
Light Concrete **5087**
NCS S 4005-G80Y

w/r 5087
LRV 33



Deep Fossil **5082**
NCS S 5502-Y

w/r 5082
LRV 22



Pebble Grey **5083**
NCS S 4000-N

w/r 5083
LRV 34



Muted Stone **5081**
NCS S 2005-Y50R

w/r 5081
LRV 46



Grey Flourite **4042**
NCS S 2002-Y50R

w/r 9803
LRV 48



Agate Grey **4043**
NCS S 3500-N

w/r 9804
LRV 38



Galena **4047**
NCS S 4502-R

w/r 9807
LRV 27



Gypsum **4044**
NCS S 2005-Y30R

w/r 9800
LRV 50



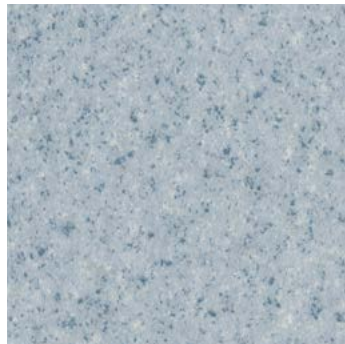
Copal **4046**
NCS S 3010-Y20R

w/r 9801
LRV 39



Andesite **4049**
NCS S 4005-Y50R

w/r 9802
LRV 26



Angelite **4051**
NCS S 3010-R90B

w/r 9806
LRV 40



Blue Quartz **4054**
NCS S 6010-R90B

w/r 9808
LRV 17



Jetstone **4045**
NCS S 6500-N

w/r 9805
LRV 15



Pearl River **5084**
NCS S 1000-N

w/r 5084
LRV 63



Valley Rock **5086**
NCS S 7005-Y20R

w/r 5086
LRV 14

PRODUCT TESTING

In areas where there is a higher potential for slips and trips, it is important to choose a HSE compliant flooring solution that offers sustainable slip resistance for the product’s lifetime.

✓

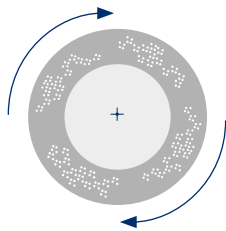
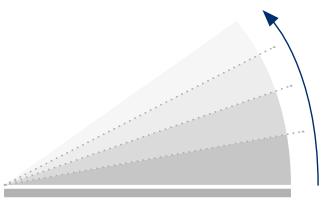
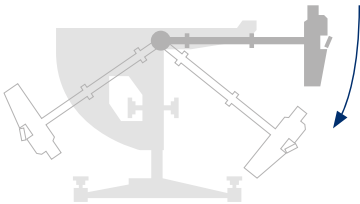
PENDULUM TEST

✓

RAMP TEST

✓

50,000 CYCLES TEST



RRL Pendulum Test

36+

Sustainable Slip Resistance

P3

AS 4586

DIN 51130 & AS 4586

R10

EN 13845

The European safety flooring standard

Conformance to the 50,000 cycles abrasion test demonstrates that the performance particles within a safety floor are durable, offering longevity and sustainable performance for the guaranteed life of the product.

PUR

TECHNOLOGY

✓ Easy clean

✓ Maintain cost savings

✓ Optimum appearance retention

✓ Resistance to staining & chemicals

TECHNICAL SPECIFICATION

	Gauge	ISO 24346 (EN 428)	2.0mm
	Wear Layer	ISO 24340 (EN 429)	0.70mm
	Sheet Size	ISO 24341 (EN 426)	2m x 20m = 40m²
	Total Weight	ISO 23997 (EN 430)	2780g/m²
	General Performance	EN 13845 ASTM F1303	Conforms Conforms
	Use Area	ISO 10874 (EN 685)	
	Enhanced Slip Resistance	EN 13845 AS 4586 DIN 51130/DIN EN 16165 Ann. B RRL Pendulum Test Surface Roughness	ESf R10 R10 ≥36 (wet test - 4S Rubber/Slider 96) Rz ≥20µm The wet slip resistance across all Polysafe products is sustainable throughout the guaranteed life of the product, with strict adherence to HSE Guidelines. For further clarification regarding slip resistance, consult Polyflor.
	Abrasion Resistance	EN 13845	50,000 cycles
	Reaction to Fire	EN 13501-1 ASTM E648 AS ISO 9239-1 CAN/ULC S102.2	Class Bfl-S1 Class 1 >8.0 KW/m² FSV < 300, SDV < 500
	Static Electrical Propensity	EN 1815	≤2.0kV Classified as 'antistatic'
	VOC Emissions	Indoor Air Comfort GOLD AgBB/ABG FloorScore Finnish M1 Classification	Eurofins certified product Pass Certified Certified
	Resistance to Chemicals	ISO 26987 (EN 423)	Good chemical resistance
	Responsible Sourcing	BES 6001	Excellent
	Bacterial Resistance	ISO 846 Part C	Does not favour growth
Agrément Assurance – Polysafe Stone & Wood fx PUR has been independently assessed by the British Board of Agrément and product performance is assured for at least 10 years in recommended use areas. With proper maintenance, the appearance, colour and slip resistance will be retained during this period.			
Environmentally Preferable Flooring – Polysafe Stone & Wood fx PUR achieves BRE Global A+ rating (ENP 415) in the Green Guide to Specification in use areas such as education and healthcare. Generic EN 15804 Environmental Product Declaration (EPD) available on request. It is 100% recyclable and contains 10% recycled material. Recyclable via the Recofloor scheme. Visit www.polyflor.com/sustainability .			
Polysafe PUR – The Polysafe fx PUR collection feature a high quality, cross-linked polyurethane reinforcement, UV cured to provide superior cleaning benefits, life cycle maintenance savings and optimum appearance retention. As with all Polysafe products, Stone fx & Wood fx PUR should not have a polish applied.			
	Hygiene	All Polyflor commercial sheet vinyl ranges provide a continuous, impervious and hygienic flooring solution which can be confidently cleaned in accordance with recommended maintenance procedures and approved maintenance products. The implementation of an effective cleaning regime is the most important defence against infection.	
	Polysafe safety flooring ranges have good resistance to dilute acids and alkalis, are compatible for use with the most commonly used alcho-based hand gels and are suitable for steam cleaning on a periodic basis. Chemical resistance charts available on request. For information regarding handling and installation, adhesives, maintenance, applications, chemical resistance and product warranty, consult Polyflor Customer Technical Services on +44 (0)161 767 1912, or email tech@polyflor.com . As with all Polysafe products, Polysafe Stone fx PUR should not have a polish applied. For best results, flooring must be reversed laid. The data presented is correct at the time of printing. For latest information, please visit our website polyflor.com . Decoration and shade may vary slightly from the samples shown.		

100% RECYCLABLE
10% RECYCLED MATERIAL

A+ BRE

ENP 415
ENVIRONMENTAL
RATING

EPD

ENVIRONMENTAL
PRODUCT
DECLARATION

Recofloor

Vinyl Take-Back Scheme

POLYSAFE
PUR

OPTIMUM
APPEARANCE

UP TO
60%

MAINTENANCE
COST SAVING

BES 6001

Responsible Sourcing

www.greenbooklive.com

floor
score

RECOMMENDED
FLOORING
SERVICES

BBA

APPROVAL
SCHEME
FOR
BUILDING
PRODUCTS

GREEN BUILDING
COUNCIL

GREEN
BUILDING
COUNCIL
CERTIFIED
PRODUCT

NBS National
BIM Library

NBS Plus

SGS

TESTING
LABORATORY

SGS

TESTING
LABORATORY

UK
manufactured

For more information regarding our recommended safety flooring finishes or product testing please contact Customer Technical Services Department on +44 (0)161 767 1912 or email tech@polyflor.com Alternatively please visit polyflor.com/safety

UK
CA

BS EN 14041

CE

EN 14041

FREE
SAMPLES

+44 (0)161 767 2551
polyflor.com

Polysafe™

POLYFLOR™ INTERNATIONAL

Australia

Polyflor Australia
Tel: 1800 777 425
E-mail: sales@polyflor.com.au

Canada

Polyflor Canada Inc.
Tel: +1 905 364 3000
E-mail: sales@polyflor.ca

China

Polyflor Hong Kong O/B Polyflor Ltd.
Tel: +(852) 2865 0101
E-mail: info@polyflor.com.hk

Colombia

Polyflor Ltd. (LATAM Office)
Tel: +57 (601) 7431965
E-mail: info@polyflor.com

France

James Halstead France SAS
Tel: +33 (0)8 20 20 32 11
E-mail: info@jhfrance.fr

Germany

objectflor Art und Design Belags GmbH
Tel: +49 (0) 2236 966 330
E-mail: info@objectflor.de

India

Polyflor India Pvt Ltd.
Tel: +91 22 4023 2485
E-mail: info@polyflor.co.in

Ireland

Polyflor Ireland
Tel: +353 (1) 864 9304
E-mail: salesireland@polyflor.com

Malaysia

Polyflor Martex
Tel: 1300 80 7788
E-mail: sales@polyflor.com.my

Middle East

Polyflor FZE
Tel: +971 50 406 8114
E-mail: aelwakil@polyflorfze.ae

New Zealand

Polyflor New Zealand Ltd.
Tel: 0800 765 935 Tel: +64 9 269 1111
E-mail: sales@polyflor.co.nz

Norway

Polyflor Nordic
Tel: +47 23 00 84 00
E-mail: firmapost@polyflor.no

Poland

Polyflor Sp. Z.o.o.
Tel: +48 (0) 61 820 3155
E-mail: polyflor@polyflor.com.pl

South Africa

Poly Sales Africa (Pty.) Ltd.
Tel: +27 (0) 11 609 3500
E-mail: info@polyflor.co.za

Spain

Polyflor Ltd.
Tel: +34 619 949 054
E-mail: info@polyflor.com

Sweden

FalckDesign AB
Tel: +46 (0) 300 15820
E-mail: info@falckdesign.com

POLYFLOR™ UK

Polyflor Ltd. PO Box 3, Radcliffe New Road,
Whitefield, Manchester, M45 7NR

UK Sales Direct: +44 (0) 161 767 1122
UK Samples Direct: +44 (0) 161 767 2551
Export Sales Direct: +44 (0) 161 767 1913
Technical Support: +44 (0) 161 767 1912
E-mail: info@polyflor.com

polyflor.com/safety