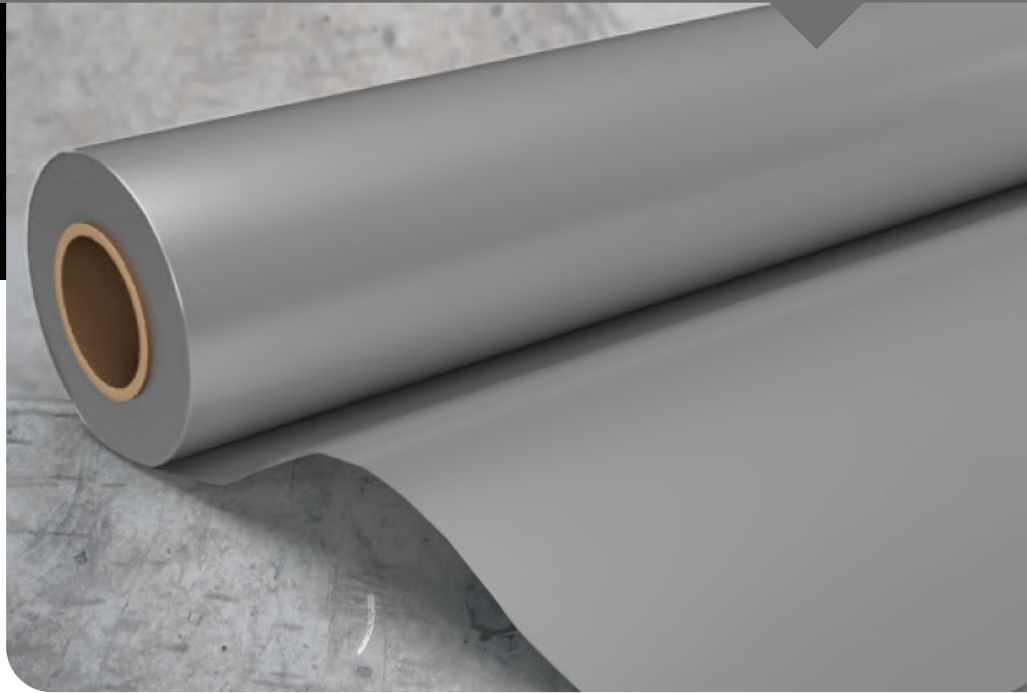
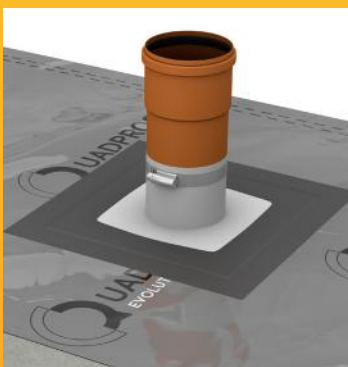




QUADPROOF
EVOLUTION MEMBRANE
Total Ground Gas control

High specification co-extruded multi-layer barrier specifically developed for use on construction sites.



Quadproof Evolution is a high specification co-extruded multi-layer barrier specifically developed for use on construction sites contaminated by Volatile Organic Compounds, Hydrocarbons and other ground gasses such as Methane, Radon and CO₂.

The product is 14 layers and contains 2 layers of gas barrier polymer (EVOH) to offer exceptional performance and prevent the ingress of dangerous gasses into buildings.

It is manufactured using the latest co-extrusion technology and cannot delaminate. The product will also act as a damp-proof membrane.

The membrane is manufactured using High Performance engineering Polymers to give exceptional strength and does not require reinforcement. It can be installed by the use of sealing tapes or can easily be welded.

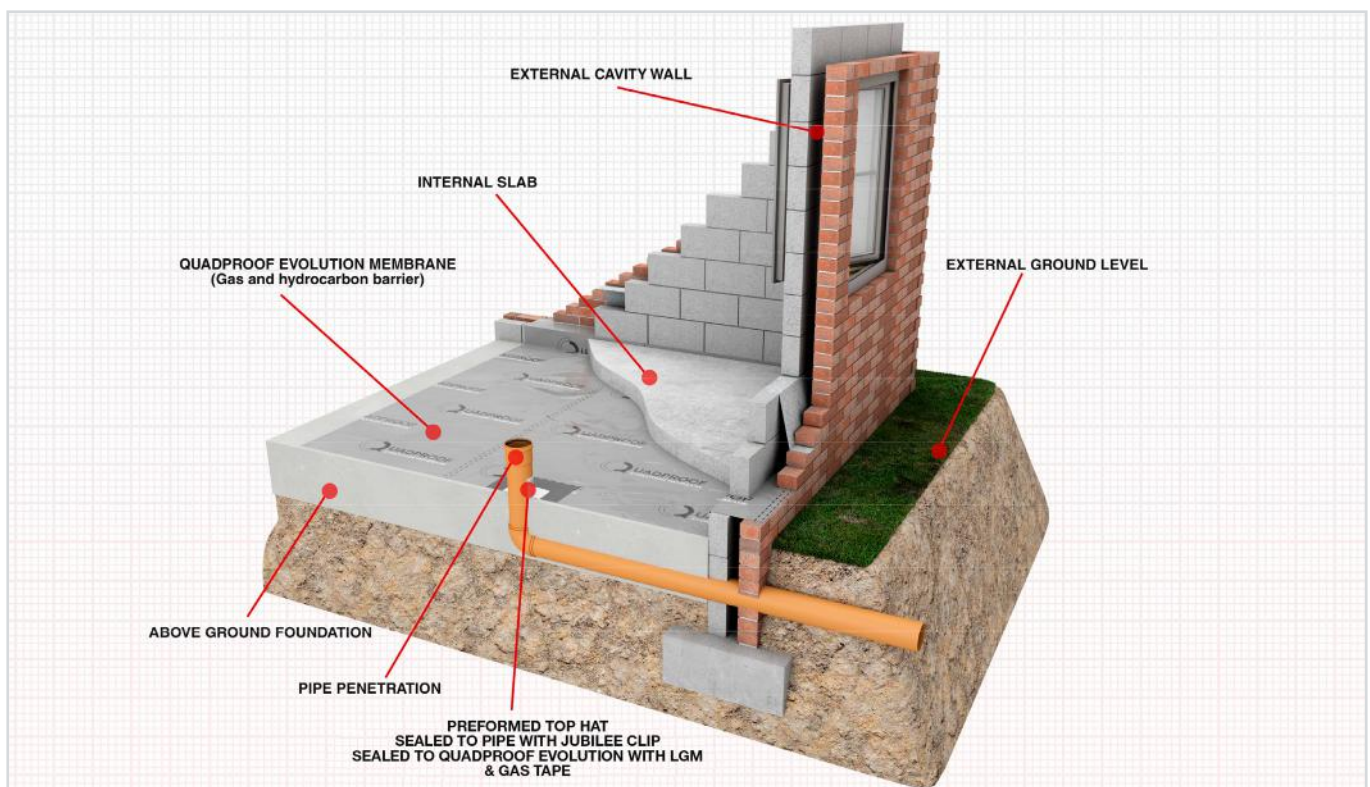
A NEW GENERATION OF GAS BARRIER

- Advanced Fourteen-Layer Barrier
- Two layers of Ethylene Vinyl Alcohol Co-Polymer (EVOH)
- Outstanding Gas Resistance
- Conforms with BS8485:2015+A1:2019 (Table7)
- Conforms to BS8102 2022
- Conforms to the specification requirements of NHBC Amber 1 & 2 applications
- Suitable for all characteristic Gas Situation (CS) ground gas regimes
- Excellent Welding Characteristics

TECHNICAL DATASHEET

Material Properties	Test Method	Value	
Thickness (µm)	N/A	400µm	+/- 6%
Width (mm)	N/A	1.65m	+6mm/-0mm
Length (mm)	N/A	61m	+6mm/-0mm
Repeat Tolerance (mm)	N/A	N/A	
Dynamic C.O.F	BS 2782-824A	0.4 +/- 0.1	
Tensile break force (%)	ASTM D882 / DIN 53455	MD >160	TD >175
Tensile strength @ break (%) MPA	ASTM D882 / DIN 53455	MD >16	TD >16
Elongation Break (%)	ASTM D882 / DIN 53455	MD >500	TD >550
Slow Puncture deflection (mm)	3mm radius	> 3	
Slow Puncture force (N)	-3mm radius	> 30	
Density (nominal) (g/cm ³)	-	0.957 g/cm ³	
Unit Weight (g/m ²)	-	382.8	
Sealing Range	RFM 8	110°C - 150°C	

Barrier Properties*	Test Method	Value
OTR	ASTM F 1927, 20°C 60% RH	Less than 0.75 cc
WVTR	ASTM F 1249, 38°C 90% RH	Less than 2.0g

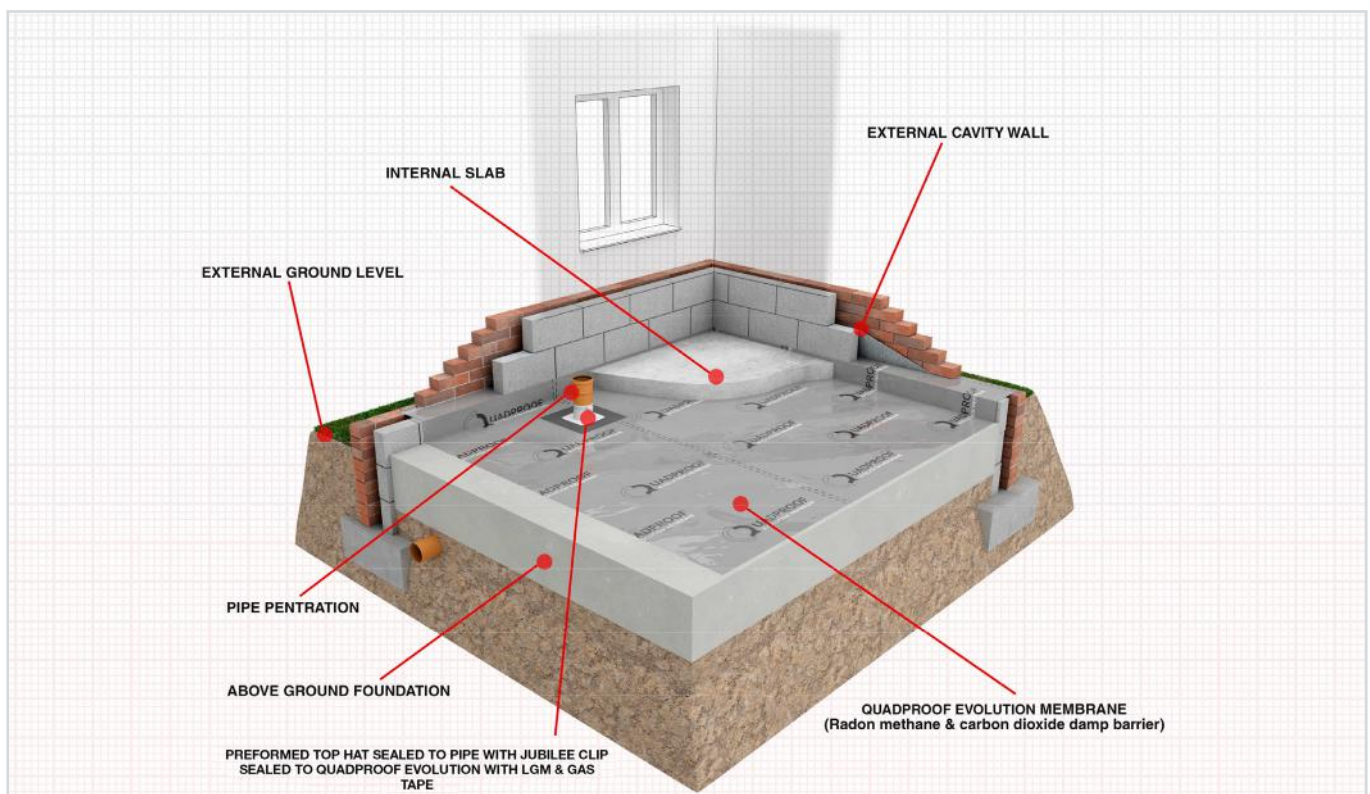


QUADPROOF EVOLUTION MEMBRANE

BS8485:2015+A1:2019

Meets all the following criteria:

- Sufficiently impervious to the gases with a methane gas transmission rate <40.0 ml/day/m²/atm (average) for sheet and joints (tested in accordance with BS ISO 15105-1 manometric method)
- Sufficiently durable to remain serviceable for the anticipated life of the building and duration of gas emissions
- Sufficiently strong to withstand in-service stresses (e.g settlement if placed below floor slab)
- Sufficiently strong to withstand the installation process and following trades until covered (e.g penetration from steel fibres in fibres reinforced concrete, penetration of reinforcement ties, tearing due to working above it, dropping tools, etc)
- Capable, after installation, of providing a complete barrier to the entry of the relevant gas



Test	Standard	Unit	Result
Determination of gas transmission rate*	ISO 15105-1 10.2007		
Test gas: Methane (CH ₄)			
Gas permeability at 23°C / 0 % r.H.		cm ³ /(m ² d.bar)	≤ 0,09
Gas permeability at 23°C / 0 % r.H.		ml/(m ² d.atm)	≤ 0,09

TECHNICAL DATASHEET

TECHNICAL DATA

INTENDED USE:

The Pre-Applied Waterproofing Membrane is a flexible sheet for water proofing, for use to damp-proof and waterproof below ground structures and to protect the building from the ingress of water and water vapour, radon, methane and CO², hydrocarbons and VOC's.

Waterproofing membrane tested in accordance with EN 13967:2012+A1:2017 Flexible sheets for waterproofing -

Plastic and rubber damp proof sheets including plastic and rubber basement tanking sheet - Definitions and characteristics.

Testing elements from European Assessment Document EAD 030378-00-0605 Fully bonded, pre-applied flexible sheet for waterproofing.

Testing Notified Body: 0761 - Materialprüfanstalt für das Bauwesen (MPA BS)

ESSENTIAL CHARACTERISTICS	TEST CONDITION	PERFORMANCE
Thickness (Overall)	Nominal	1.9mm nominal
Thickness (Membrane)	DIN EN 1849-2	0.4mm
Thickness (Geotextile)	EN ISO 9863/1	1.70mm +-20%
Colour		Silver
Width	DIN EN 1848-2	1.65m +6mm/-0mm
Length	DIN EN 1848-2	61m +6mm/-0mm
Area		49.5m ²
Mass	DIN EN 1849-2/ISO 9864	515g.m ²
Packaged roll weight		28.65kg
Reaction to fire	DIN EN ISO 11925-2/EN 13501-1	E
Peel resistance (180°peel)	EN ISO 8510-2	49.1 N/50mm
Water tightness @ 60kPa 24h	DIN EN 1928 – Method B	Watertight
Water tightness @ 500kPa 72h	DIN EN 1928 – Method B	Watertight
Resistance to damage – water creep at leakage	Basis of EN 12390-8	TBC
Resistance to impact	DIN EN 12691 – 350mm drop	Watertight
Resistance to Static Loading	DIN EN 12730	20kg (Pass)
Durability against thermal ageing @ 60kPa	DIN EN 1296/DIN EN1928	Watertight
Durability against chemicals @ 60kPa	DIN EN 1847/DIN EN 1928	Watertight
Durability against alkaline environment @ @ 60kPa	DIN EN 1847/DIN EN 1928	Watertight
Durability against sulphurous acid @ 60kPa	DIN EN 1847/DIN EN 1928	Watertight

STORAGE & SHELF LIFE

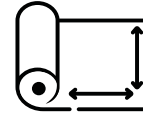
Store in an upright position, under cover and away from high temperatures and open flames. Shelf life is the lifetime of the structure, when stored and installed in line with the datasheet recommendations.

HEALTH AND SAFETY

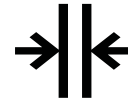
No specific hazards are likely to arise while using any Wykamol Waterproofing Membranes or ancillaries; neither are classified as hazardous in respect to CHIP II Regulations 1999.

However, general precaution should be exercised in the use of drill etc. taking particular note of the special risk associated with working in confined spaces (basements) with restricted access/egress.

The Wykamol Group always advise the use of appropriate PPE, including gloves, hard hat, goggles, high visibility jackets and steel toe cap boots. For further information and advice, please contact the Wykamol Group Technical Department.



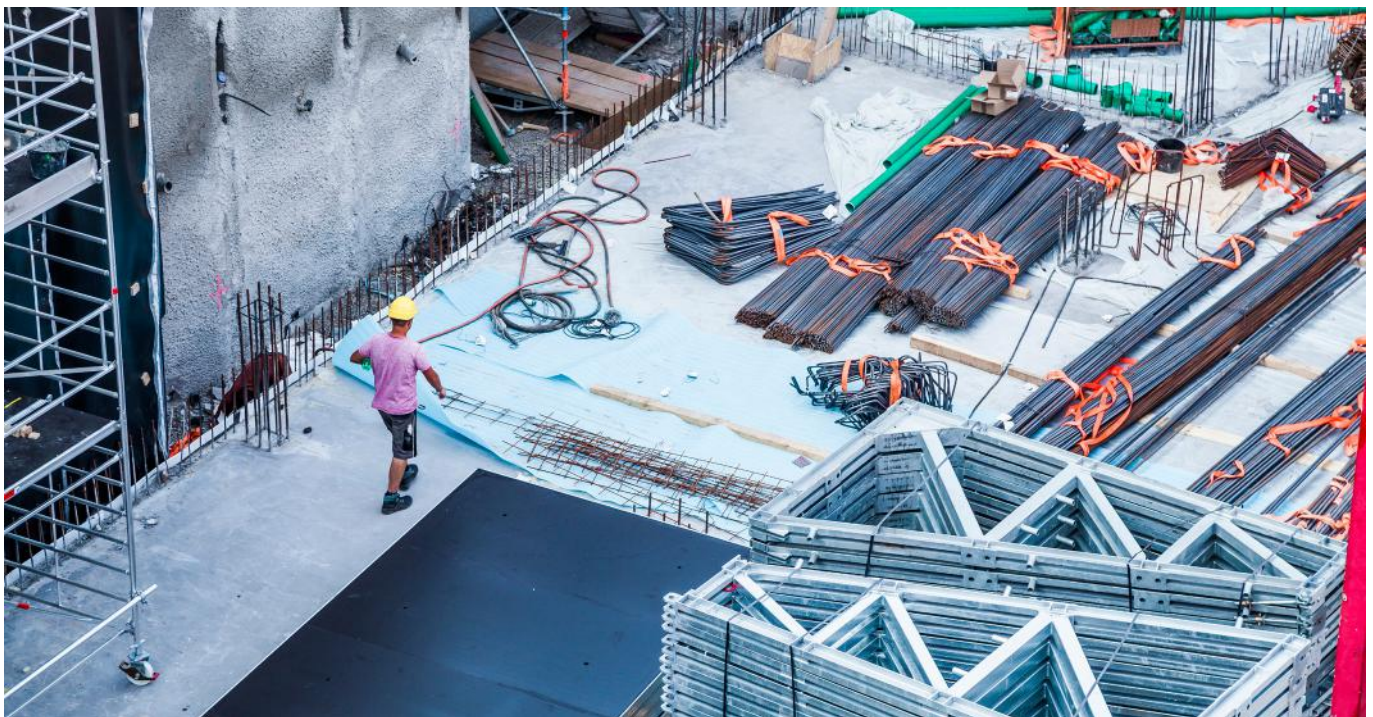
COVERAGE - 100M²



THICKNESS - 400mu



COLOUR - SILVER



Unit 3, Boran Court, Network 65 Business Park, Hapton, Burnley Lancashire BB11 5TH
t: (0)1282 473 100 • www.wykamol.com • e: info@wykamol.com

The information in this technical datasheet is given in good faith and was correct at the time of publication, but does not purport to be all inclusive. We reserve the right to update this information at any time without prior notice. All data is obtained through extensive testing in stringent laboratory conditions, however as we have no control over site conditions or work executed we accept no liability for incidental and/or consequential property damage arising out of the use of this product. The Wykamol Group's standard terms and conditions of sale apply.