

QSTD-553-BCS

—boiling, chilled and sparkling solutions for the office

quatreau®
SmartTap



BOILING



CHILLED



SPARKLING



Model shown above QSTD-553-BCS

QSTD-553-BCS

—boiling, chilled and sparkling solutions for the office

SPECIAL FEATURES

- Delivers high volumes of boiling, sparkling and chilled water
- Fits into a standard 600 cupboard
- Ventilation duct included for kick space installation
- Low energy consumption
- Highest performing insulation
- Most robust and reliable system available on the market
- Dispenses up to 30 ltrs steaming hot water (circa. 98C) per hour
- Up to 15 mugs in one draw with no temperature drop & just 5-8 minutes recovery time
- Dispenses up to 20 litres chilled sparkling water per hour below 10C and as low as 4C
- Easy to use push button control with (optional) built-in safety feature
- Solid State Buttons for one touch activation and 6 second time out feature
- Elegant flush fitting drip tray with waste attachment
- Manufactured in the UK
- Leak detection as standard

NOTES:

* Subject to Terms and Conditions



QSTD-553-BCS

—boiling, chilled and sparkling solutions for the office



BOILING



CHILLED



SPARKLING

QSTD-553-BCS



QSTD-553-BCS



QUATREAU™ is the only tap system on the market to use 316 stainless steel throughout its manufacturing processes. Our boilers and boiler elements (electro polished) are highly resistant to corrosion and suitable for all types of potable water including low conductivity and ROWater. Even our filter housings and system casings are 316 stainless providing for long life and recycling value, something often overlooked in today's lifestyle products.

EQUIPMENT DIMENSIONS

System is installed in component form fitting into a standard cabinet (600 x 600 external dims) Boiler Control Unit and Chiller are supplied as Individual components to make installations easier – see dimensions on drawing page.

SITE PREPARATION DETAILS

1. Cold Water Supply isolated with ½" ball valve
 - A. Cold water to rise at back of cupboard and run along the top right side of cupboard approx. 20cm up from base isolated 15cm from front
 - B. Maximum water pressure 60 psi
 - C. Minimum water pressure 45 psi
2. Power x 2 13amp sockets
 - A. Ideally located on the left side of cupboard wall at high level approx. 20cm up from base and 15cm from front
 - B. Ventilation to be cut into the base. Vent kit will be installed running underneath cupboard forward to draw air through kick board
3. Trapped waste upstand located at rear left corner of cupboard behind back board.
 - A. Essential that this doesn't sterilise the footprint of the equipment being installed

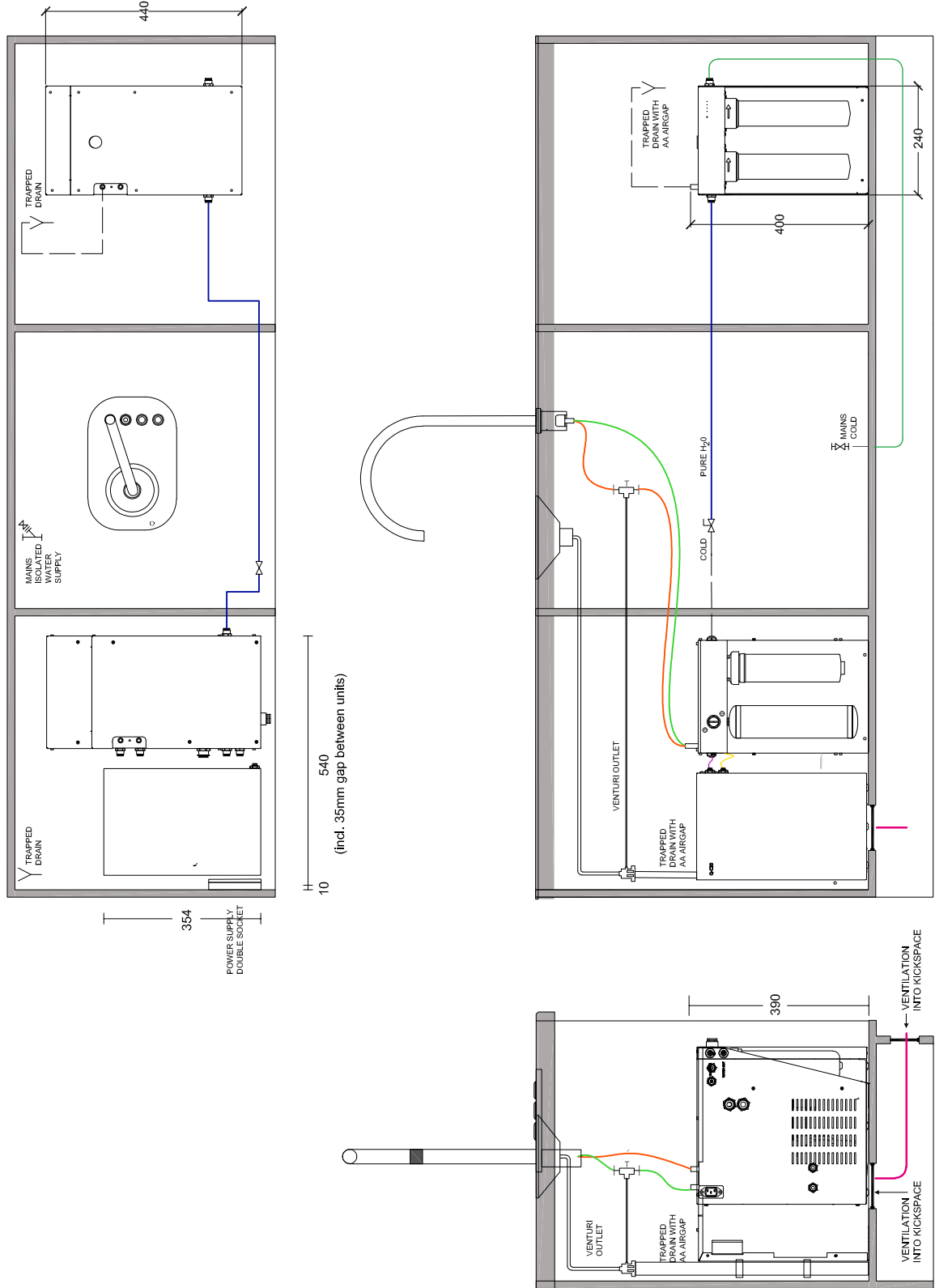
See drawings for further information

QSTD-553-BCS

—boiling, chilled and sparkling solutions for the office



TYPICAL INSTALL DIAGRAM

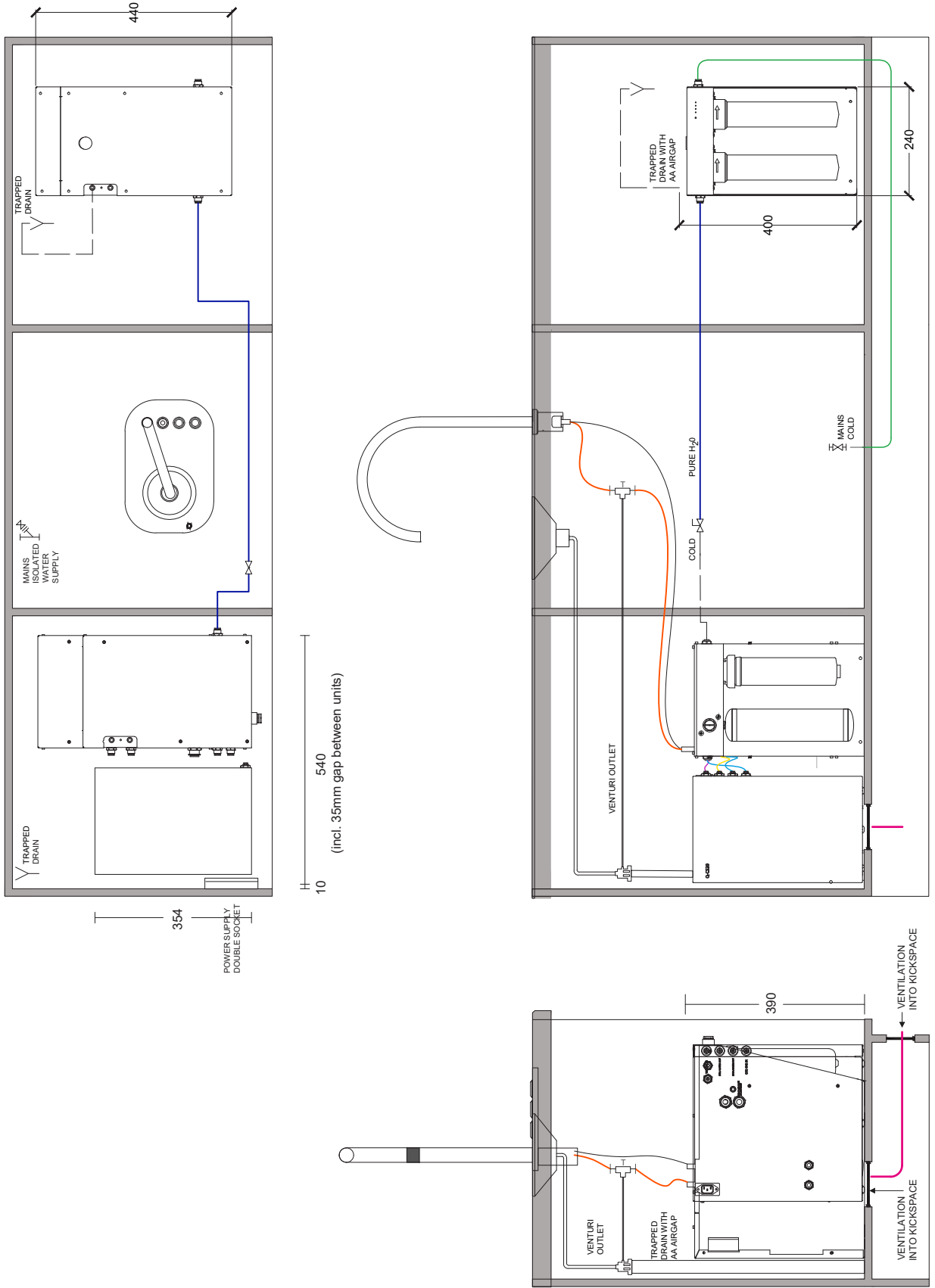


QSTD-553-BCS

—boiling, chilled and sparkling solutions for the office



TYPICAL INSTALL DIAGRAM with purity purifier*



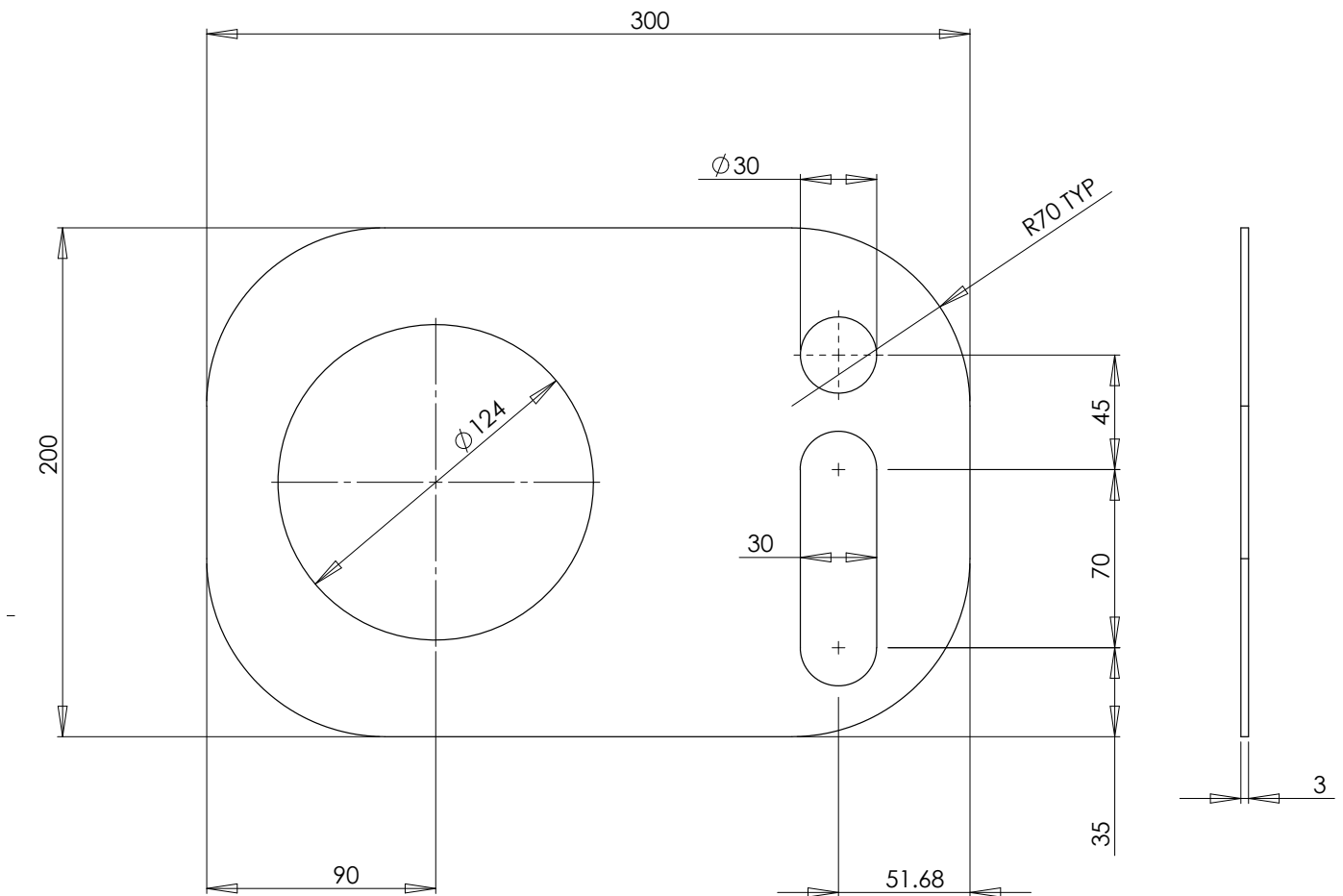
NOTES

*Optional pure water function, the only system suitable for use with optional RO water for the ultimate in taste and purity.

QSTD-553-BCS

—boiling, chilled and sparkling solutions for the office

CUTTING TEMPLATE



NOTES:

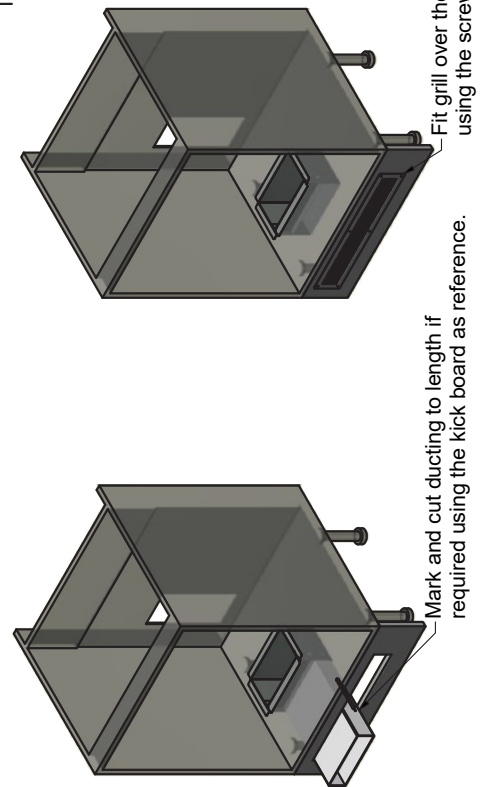
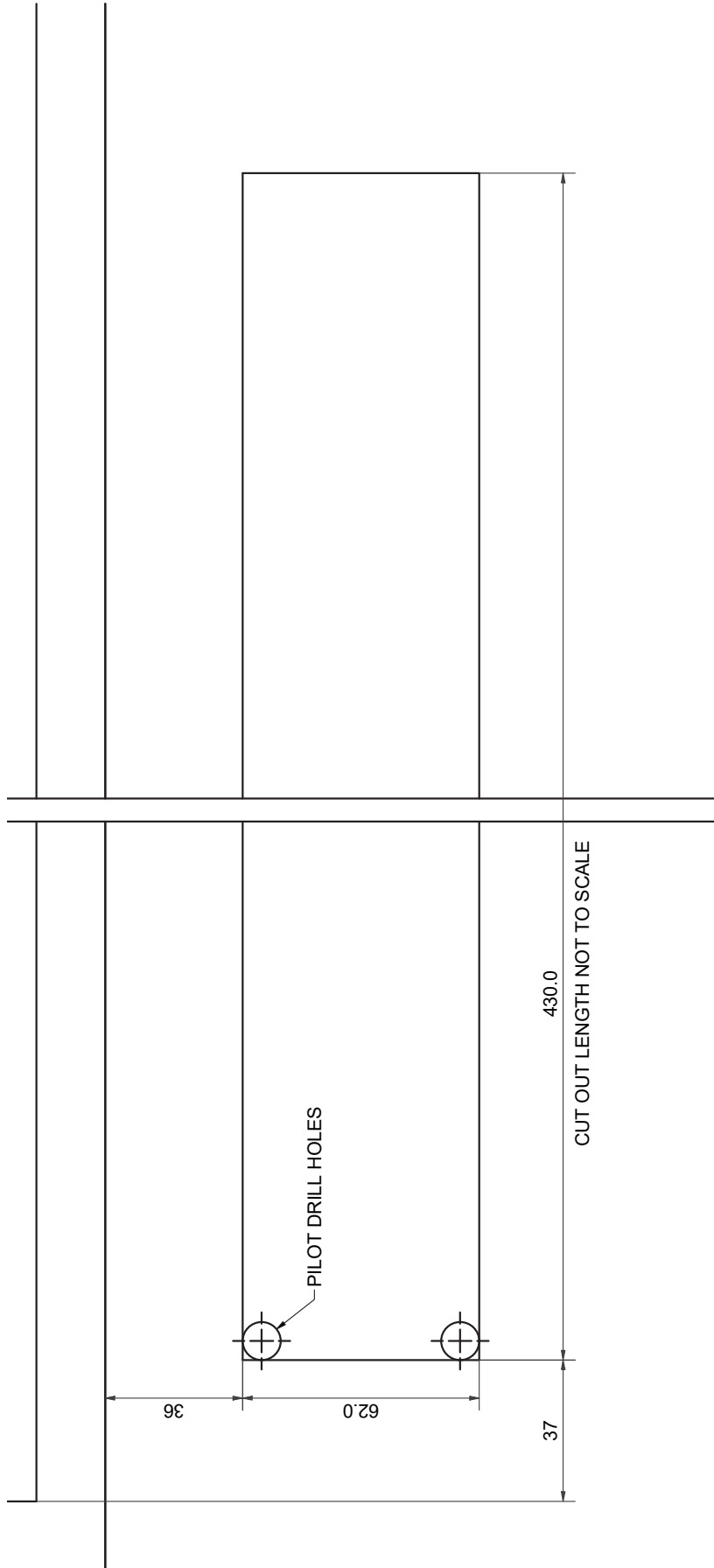
Unless otherwise specified all dimensions are in mm
Scale 1:5

QSTD-553-BCS

—boiling, chilled and sparkling solutions for the office



VENTILATION DRAWINGS - Kick Board Cutting Template

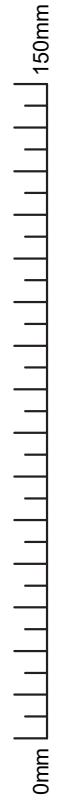


Mark and cut ducting to length if required using the kick board as reference.

Fit grill over the kick board cut out using the screws supplied.

IMPORTANT: Before making any cuts into the cupboard or kick board, ensure the area to be cut is free from water pipes or electrical cables. There is a risk of serious injury or death if electrical cables are cut, and significant damage to property if a water pipe is cut.

SCALE - 1:1
PAGE - A3



Use for: Q-C20, Q-CS20, Q-C50, Q-CS50

3B7698-01 KICK-BOARD CUTTING TEMPLATE.

QSTD-553-BCS

—boiling, chilled and sparkling solutions for the office

YOU'RE IN GOOD COMPANY

We have clients enjoying our systems, purifiers, Quatreau Touch and SmartTaps (dispensing a variety of water types) in all of these buildings some of which continue to rollout installs across Europe and beyond.



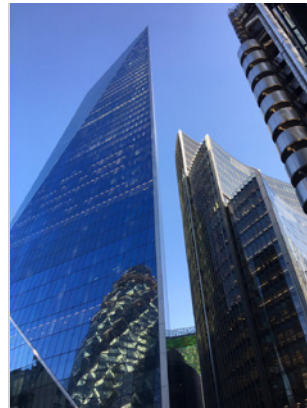
WORLD TRADE CENTRE - New York

One World Trade Center is the main building of the rebuilt World Trade Center complex in Lower Manhattan, New York City. One WTC is the tallest building in the United States, the tallest building in the Western Hemisphere, and the sixth-tallest in the world.



THE SHARD London

The Shard, also infrequently referred to as the Shard of Glass, Shard London Bridge and formerly London Bridge Tower, is a 95-story supertall skyscraper, designed by the Italian architect Renzo Piano, in Southwark, London, that forms part of the Shard Quarter development.



THE SCALPEL London

The Scalpel is a commercial skyscraper in London, United Kingdom. It is located on Lime Street in the City of London financial area.



SALESFORCE TOWER - London

110 Bishopsgate (formerly Heron Tower now known as Salesforce Tower) is a commercial skyscraper in London. It stands 230 metres (755 ft) tall including its 28-metre (92 ft) mast making it the tallest building in the City of London financial district.

PUREH2O
MAKING THE DIFFERENCE

Call 01483 617000 to book an installation or find out more at pureh2o.co.uk

