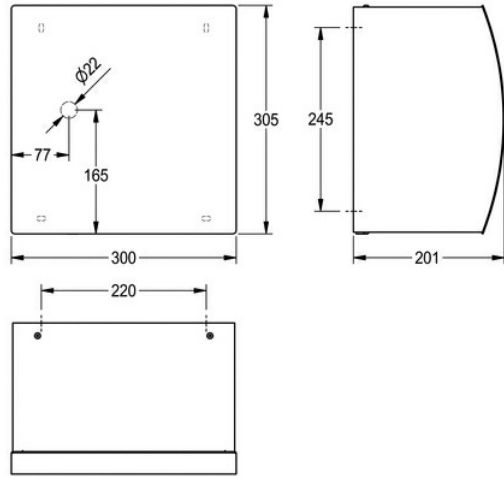
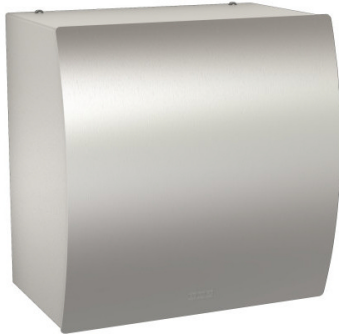


HAND DRYER: STRX210

STRX210 | 2000057203

ARTICLE GROUP : **STRX210** | ARTICLE FAMILY : **Hand dryers** | PRODUCT GROUP : **Dryers** | MODEL RANGE : **DRYERS** |
MODEL RANGE : **STRATOS**



Touch free electronic warm air hand dryer for wall mounting, stainless steel, surface satin finished, front with InoxPlus surface refinement for the reduction of finger marks and better cleaning characteristics (easy to clean), material thickness 1.5 mm, curved front cover, Infrared sensor activity for non-touch operation, sensor range adjustable from 5 to 33 cm, automatic power shut-off after 60 seconds, due to the extreme high, adjustable air velocity the drying time is shortened strongly, cable and plug not included.

Connection voltage: 230 V, 50 Hz

Total power: 1500 W

Heater: 800 W

Motor: 700 W

Air volume: 120 m³/h

Air velocity: 75-110 m/s

without a stainless steel mesh filter in the air inlet.

TECHNICAL DATA

air velocity	adjustable
blower output	120.00 cubic metres per hour
input supply voltage Hz	50.00 hertz
input supply voltage V	230.00 volt
gross weight	8.31 kg
heating power	800.00 watt
material	stainless steel
material code	1.4301 Chrome Nickel steel V2A
material thickness	1.50 mm
motor power	700.00 watt
net weight	7.56 kg
overall depth	197.00 mm
overall height	305.00 mm
overall width	300.00 mm
protective system IP	IPX1
surface finish	satin finished

surface treatment	InoxPlus (anti fingerprint)
total power	1,500.00 watt
type of fixing	screw
type of mounting	wall mounting
type of operation	sensor operation

HAND DRYER: STRX210

STRX210 | 2000057203

ARTICLE GROUP : **STRX210** | ARTICLE FAMILY : **Hand dryers** | PRODUCT GROUP : **Dryers** | MODEL RANGE : **DRYERS** |
MODEL RANGE : **STRATOS**

SIMILAR PART



HAND DRYER: XINX210

2000057423
