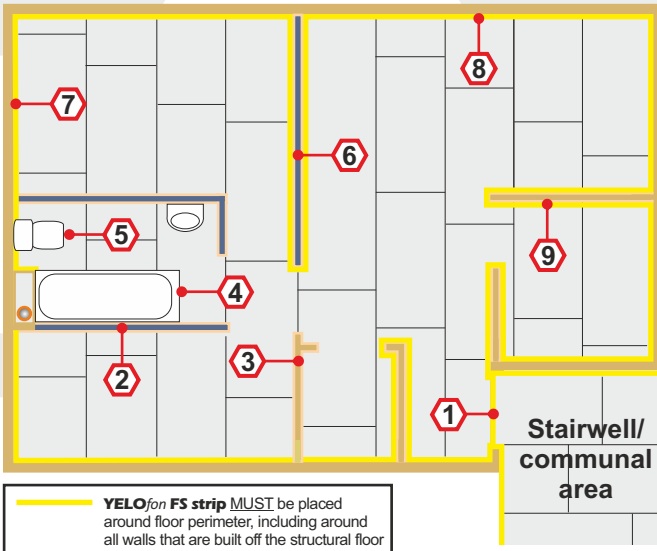
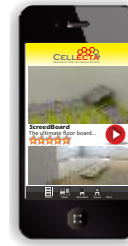


# Design & installation details - *Collecta* ScreedBoard® 28

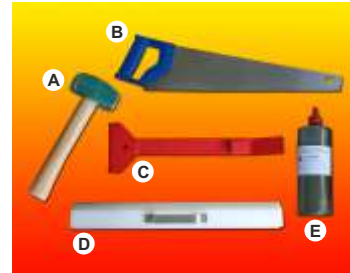
The acoustic performance of the floor structure will be compromised if the **ScreedBoard**'s are not completely isolated from the timber sub-floor, soil pipes, door frames, surrounding walls and their treatments. To address this risk, each potential problem area needs to be detailed accordingly.



**YELOfon FS strip** MUST be placed around floor perimeter, including around all walls that are built off the structural floor



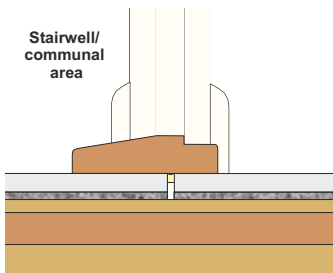
Installation video on the **COLLECTA** app



### Fixing tools

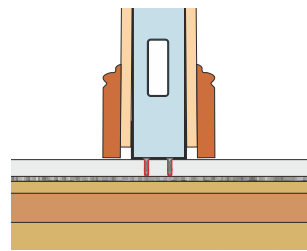
- A. Club hammer
  - B. Hand or skill saw
  - C. **ScreedBoard**® "Pull bar"
  - D. **ScreedBoard**® "Fixing batten"
  - E. **ScreedBoard**® **SB** adhesive
- Packing shims (not shown)

### 1 Door threshold



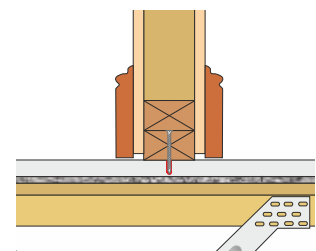
Leave a 5-10mm expansion gap between the habitable area and the communal area **ScreedBoards**.

### 2 Metal frame partition built off the floor treatment

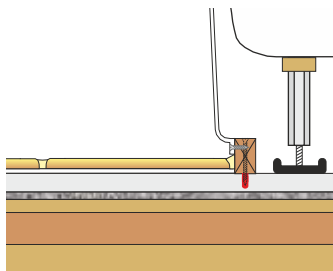


Non-load bearing metal frame or timber stud walls can be built directly off the **ScreedBoard 28**. Care should be taken to ensure screws DO NOT penetrate the resilient layer.

### 3 Timber stud partition built off the floor treatment

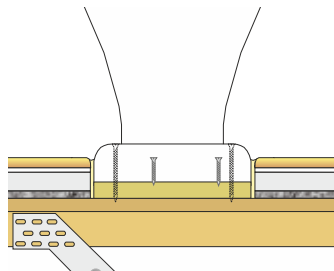


### 4 Baths, shower trays and sanitary ware built off floor treatment.



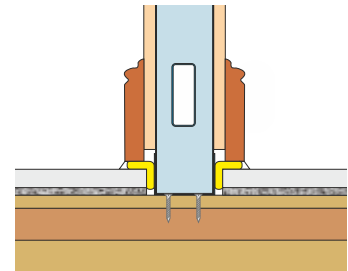
Baths, shower trays and sanitary ware can be built directly off the **ScreedBoard 28**. Under no circumstance should screws penetrate the resilient layer.

### 5 Baths, shower trays and sanitary ware built off the structural floor



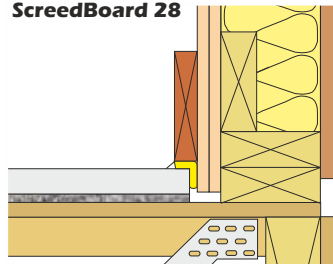
Baths, shower trays and sanitary ware built off the structural floor should be isolated from the **ScreedBoard 28** and any floor finished.

### 6 Metal frame partition built off the structural floor



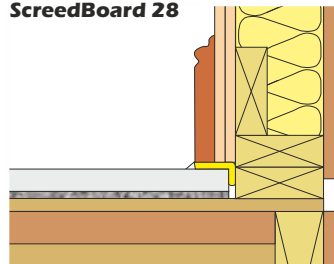
Lightweight partition walls built off the structural floor **MUST** be isolated from the **ScreedBoard** with **YELOfon FS50 strip**.

### 7 Wall treatment installed before the ScreedBoard 28



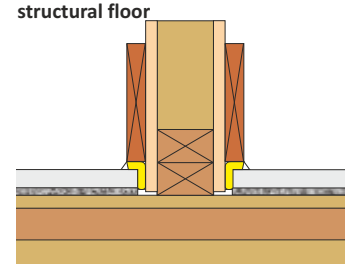
Wall treatments **MUST** be isolated from the **ScreedBoard 28** with **YELOfon FS50 strip**.

### 8 Wall treatment installed after the ScreedBoard 28



Wall treatments **MUST** be isolated from the **ScreedBoard 28** with **YELOfon FS50 strip**.

### 9 Timber stud partition built off the structural floor



Lightweight internal walls built off the structural floor **MUST** be isolated from the **ScreedBoard** with **YELOfon FS strip**.