

ScreedBoard®

The **ultimate** overlay board for acoustic and underfloor heating applications

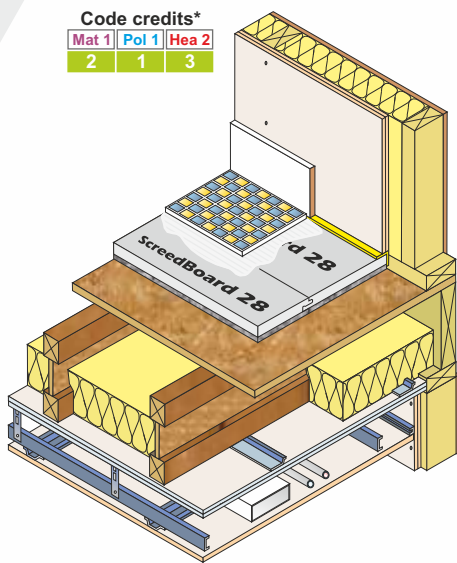
ScreedBoard®'s are manufactured from recycled calcium sulphate and reinforced with cellulose fibres. The boards have a very high density, high impact resistance, hard wearing surface and interlocking edges making them ideal for acoustic and underfloor heating applications.

ScreedBoard® 28

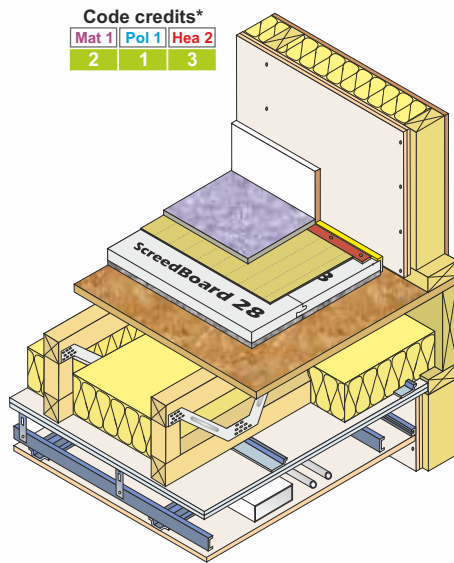
ScreedBoard® 28 is the ultimate single layer acoustic overlay treatment, featuring interlocking edges for installation convenience. Its high density and unique resilient layer provides unrivalled acoustic performance.

ScreedBoard® 28 is the only single layer system to carry **Robust** detail status (**E-FT-5 & 6**).

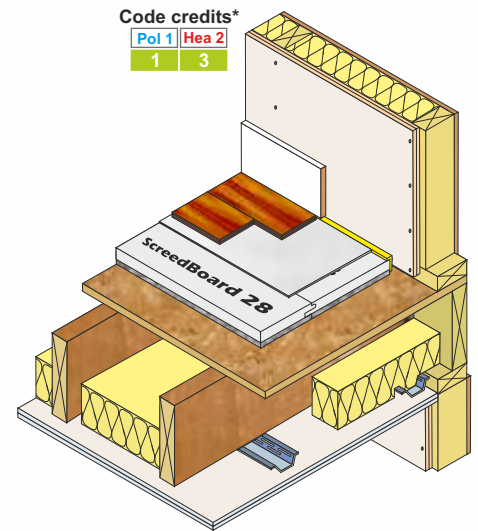
ScreedBoard® 28 Applications



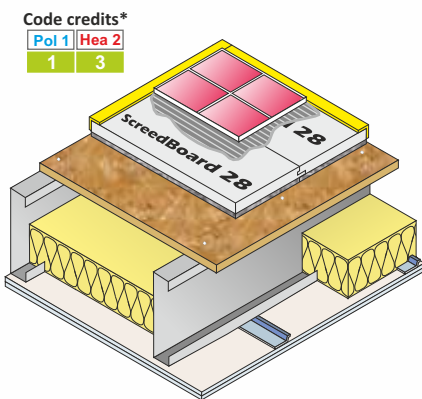
Timber I-Joist Separating Floors
Robust detail **E-FT-5**



Metal-Web Separating Floors
Robust detail **E-FT-6**



Solid Joist Separating Floors
PCT Solution



Metal Joist Separating Floors
PCT Solution

Benefits of **ScreedBoard® 28**

- ◊ High acoustic performance: Airborne 51dB⁽¹⁾ and Impact 55dB⁽¹⁾
- ◊ Robust detail system **E-FT-5 & 6** and **FFT4** compliant
- ◊ Code credits available: **Mat 1, Pol 1 & Hea 2**
- ◊ Only 28mm thick
- ◊ Doesn't contract or expand like chipboard when exposed to water
- ◊ High impact resistance
- ◊ Interconnecting edge detail - no screws required
- ◊ Reduces the number of brick courses required
- ◊ Quick and easy to install
- ◊ Can be cut with a hand or skill saw
- ◊ Accepts ceramic tiles
- ◊ Weighs only 18.72kg per sheet



⁽¹⁾Typical performance of **E-FT-5**. *Code credits are subject to appropriate weighting.



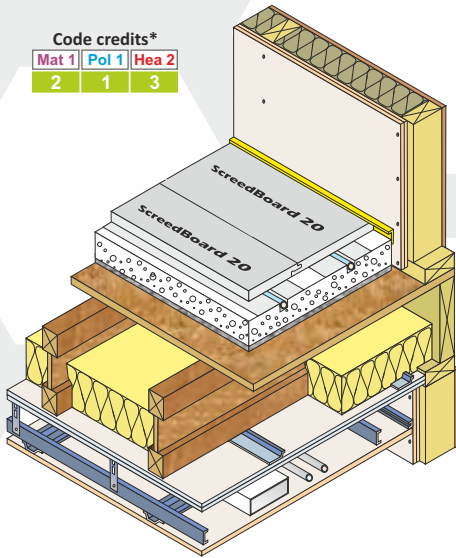
PART E
Solution



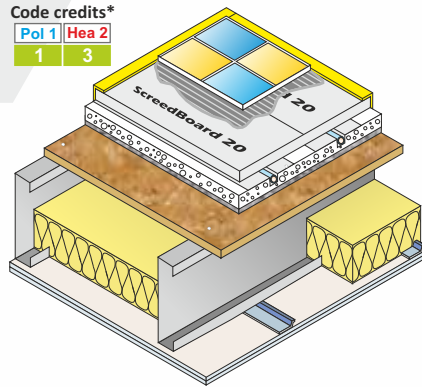
ScreedBoard® 20

ScreedBoard® 20 is the ideal product for floors featuring an underfloor heating system due to its low thermal resistance and rapid heat transfer characteristics. **ScreedBoard® 20** is also suitable for acoustic flooring applications incorporating an underfloor heating system, when combined with **FIBREfon® 8**.

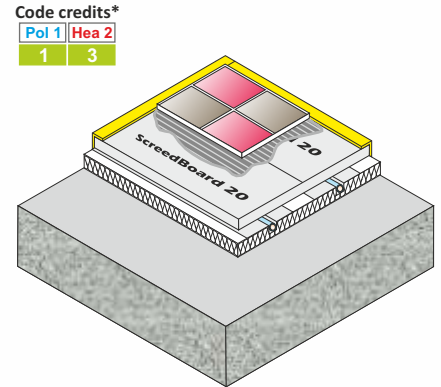
ScreedBoard® 20 Applications



Timber Joist Separating Floors with Under Floor Heating System
Robust detail E-FT-5 & 6



Metal Joist Separating Floors with Under Floor Heating system



Ground Floors with Under Floor Heating System

Benefits of ScreedBoard® 20

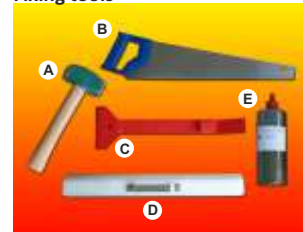
- Low thermal resistance (0.05m²/kW)
- Ideal for underfloor heating systems
- High acoustic performance⁽²⁾: Airborne 51dB⁽¹⁾ and Impact 55dB⁽¹⁾
- Robust detail treatment - **E-FT-5 & 6** (when used with **FIBREfon® 8**)
- Code credits available: **Mat 1, Pol 1 & Hea 2**
- Only 20mm thick
- Doesn't contract or expand like chipboard when exposed to water
- High impact resistance
- Interconnecting edge detail - no screws required
- Quick and easy to install
- Accepts ceramic tiles
- Weights only 18.00kg per sheet



⁽¹⁾ Typical performance of **E-FT-5**. ⁽²⁾ When used in conjunction with **FIBREfon® 8** resilient sheets.

ScreedBoard® 28 (Acoustic composite)	ScreedBoard® 20 (overlay board)	FIBREfon® 8 (Acoustic sheet)
28mm (20mm + 8 resilient layer)	20mm	8mm
600mm x 1200mm	600mm x 1200mm	600mm x 1200mm
18.72kg per board	18.00kg per board	0.72kg per board
26.00kg/m ²	25.00kg/m ²	1.00kg/m ²

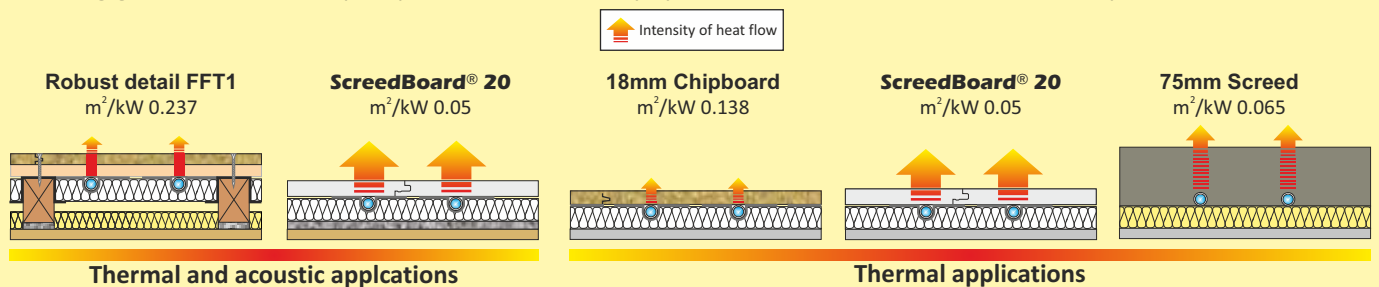
Fixing tools



- A. Club hammer
B. Hand or skill saw
C. ScreedBoard® "Pull bar"
D. ScreedBoard® "Fixing batten"
E. ScreedBoard® adhesive
Plus packing shims (not shown)

THERMAL RESISTANCE

ScreedBoard® 20 has the lowest thermal resistance when compared to the most commonly used floor finishes, allowing ground water heat pumps and heat recovery systems to work at maximum efficiency.



Head Office: Unit D Norman Close, Rochester, Kent, ME2 2JU, United Kingdom.
Tel. 08456 71-71-74
Fax. 08456 71-71-72
email: sales@collecta.co.uk
www.collecta.co.uk

Other products available from CELLECTA

UNICLOSER XCC **TETRIS** **YELOfon®** **FIBREfon®** **DECKfon®** **HiGYP®**

PART E
Solution

