



COLLAPSIBLE GATES SPECIFICATION SUMMARY

The Collapsible Gate was the starting point for Bolton Gate Company over 100 years ago. Our proud tradition of quality British manufacturing began with this product as part of the 1919 King's National Roll Scheme specifically providing employment opportunities for disabled servicemen returning from the Great War.

Although the gate design has been developed over many years, many of the original mechanical principals have stood the test of time and still remain relevant today contributing to the modern day version of the robust heavy duty steel security gate system.

A high level of security is provided by the intrinsic strength of the gate design and its appearance is an effective visual deterrent against intruders. Being custom made it also offers real flexibility with fixing arrangements; face fixed internally or externally to a support structure or within an opening fixed between the jambs and under a lintel. The small footprint makes the gate ideal for a restricted space envelope, or applications where good visibility, passage of natural airflow and daylight illumination are required.

Applications include:

Collapsible gates are extensively incorporated on railway infrastructure for both London Underground Limited (LUL) and Network Rail at numerous station applications. The gate design is ideal for car parks entrances, shop frontages, traditional markets, and historic listed buildings where aesthetic appearance in keeping with that of the building is of prime importance.

Performance Characteristics:

Provides a high level of security.
Easily installed and operated.

Key Attributes:

A gate manufactured from the best quality materials and constructed using sound engineering principals that together create a superior traditional product design: -

- Integral strength and durability.
- Compact headroom requirements.
- Compact sideroom requirements.
- Optimum ventilation.
- High visibility through the opening combined with a real intruder deterrent.

Standard Construction

The gates are manually operated and built from double channel steel vertical pickets connected by lattice bars. All gates are fitted with a swivel lock beak to accept padlocks by others.

Gate Arrangements

Collapsible gates can be manufactured as a single or in pair to fit between the jambs and under the lintel or face fixed internally or externally.

Finish

Galvanised as standard with mild steel parts zinc plated.

Weight

The approximate weight for all gate types is 32kgs / m²

GATE TYPES

Top Hung Gates

A top hung gate should be used wherever possible due to its superior operating capabilities.

Single gates up to 2500mm high and / or 3000mm wide are suspended from a flat bar top track. This is fixed at each end and has a rounded top edge to facilitate smooth operation. Larger gates have a heavy duty box type top track. Top hung gates incorporate channel bottom tracks set into the floor.

Bottom Rolling Gates

Operate with ball bearing pulleys that run on a flat bar bottom track that supports the weight of the gate. The top track can be provided as either an internal flat bar or 'T' section that is fitted to a lintel. For smaller openings, flat bar tracks can be arranged to fold away or be portable. Certain arrangements also allow the bunched gate to hinge aside to allow greater access to the opening.

Spearhead Gates

Pointed spearheads can be attached to the top of the pickets to offer climb over protection where lintels are not available for fixing at the head.

Spearhead gates run on a flat bar bottom track which is folding or portable with the weight of the gate supported by pulleys at the base of the pickets.

Arrangements in pair are provided with a centre post, which if made removable will be provided with a raking stay and ground sockets with lids.

Maximum sizes

Top Hung	Single:	8m wide x 6m high.
	Pair:	16m wide x 6m high.
Bottom Rolling	Single:	1.5m wide x 3m high.
	Pair:	3m wide x 3m high.
	Hinged:	1.5m wide or 3m high.
Spearhead	Single:	1.5m wide x 3m high.
	Pair:	3m wide x 3m high.

Options

Polyester powder coat finish in a range of standard colours.

Plated leading edge for increased security.

Mid bar fitted between pickets for increased security.

Parallel bunch for limited bunch problems.

Floating gates for spanning a wider opening.

Surelock McGill locking options.

Lock shrouds and guard plates to prevent reach through.

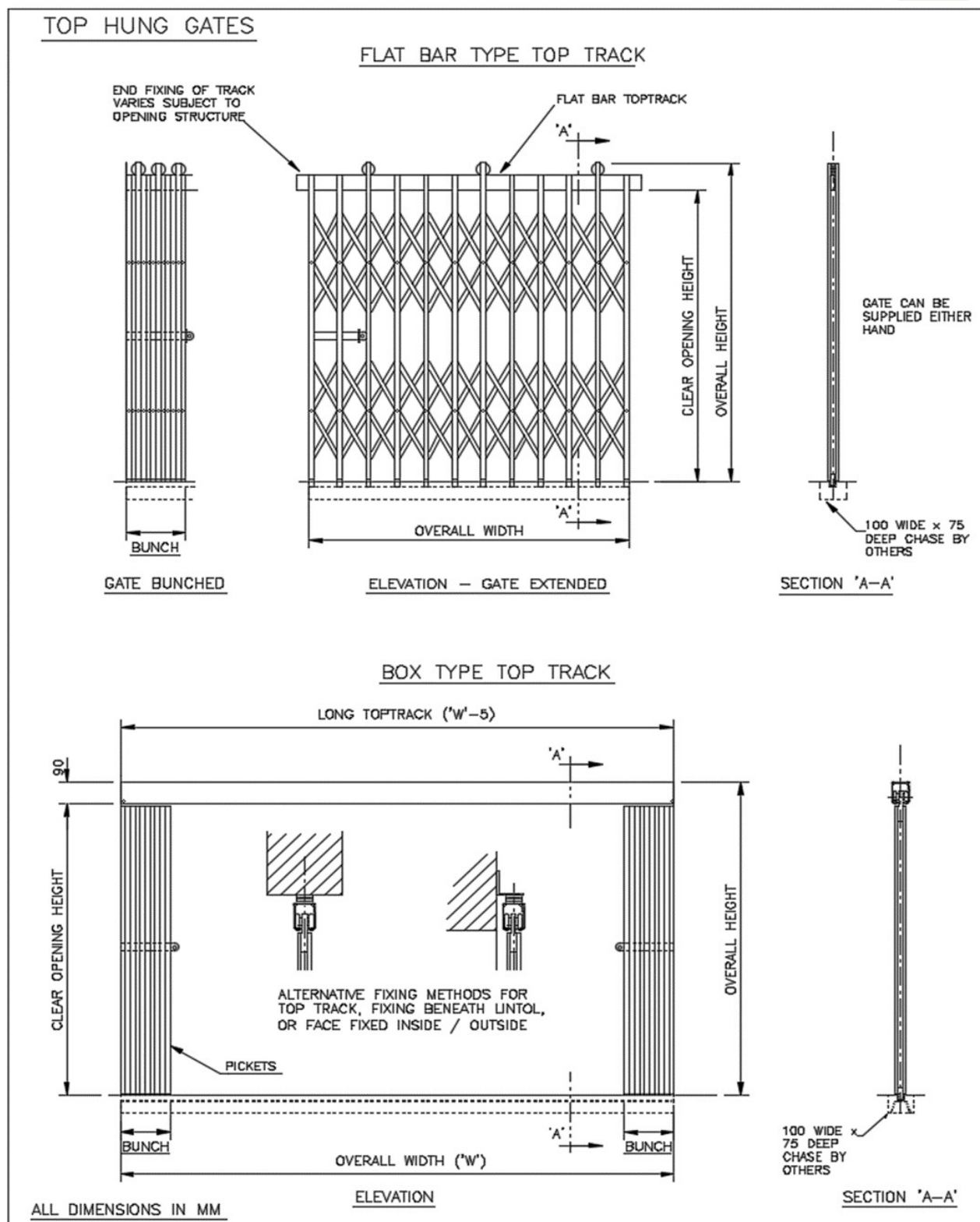
19mm pickets (in lieu of 16mm).

To specify this product please state:

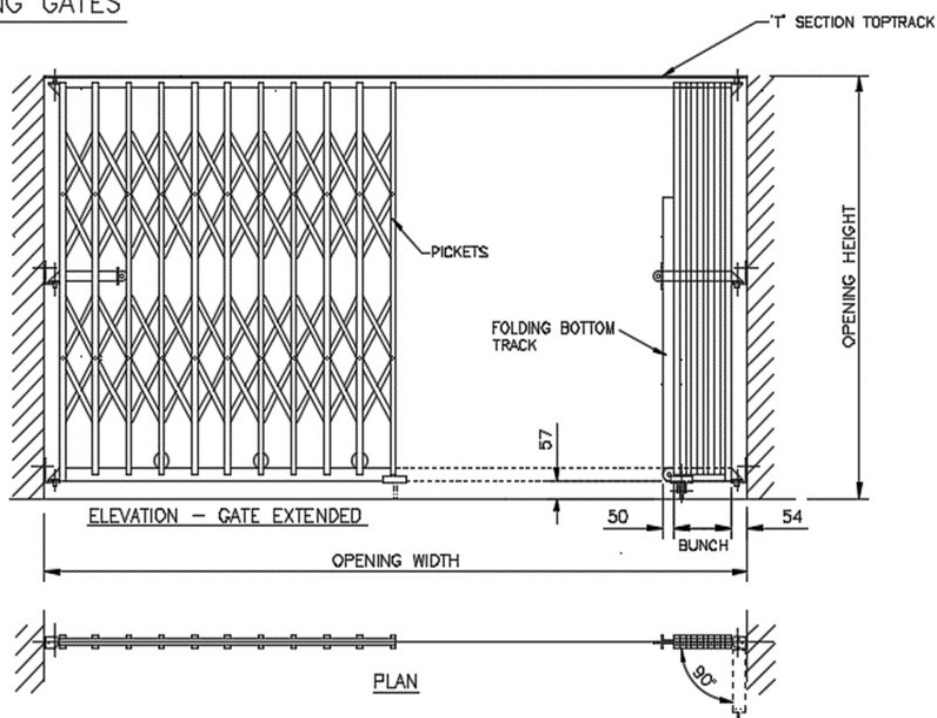
Collapsible Gates shall be by Bolton Gate Company Ltd, Waterloo Street, Bolton BL1 2SP, UK

Tel: 01204 871001;

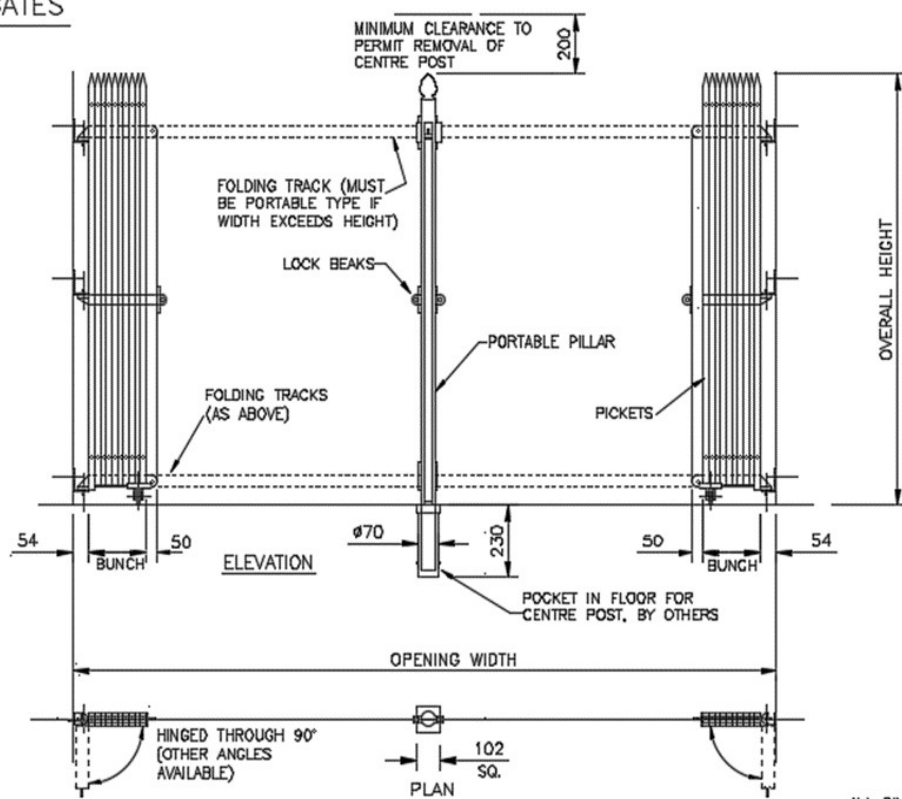
E-mail: sales@boltongate.co.uk **Web:** www.boltongate.co.uk



BOTTOM ROLLING GATES

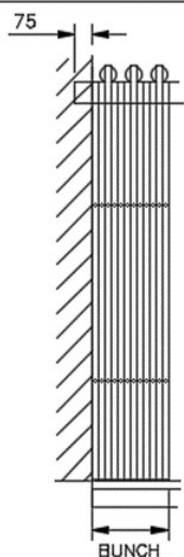


SPEARHEAD GATES

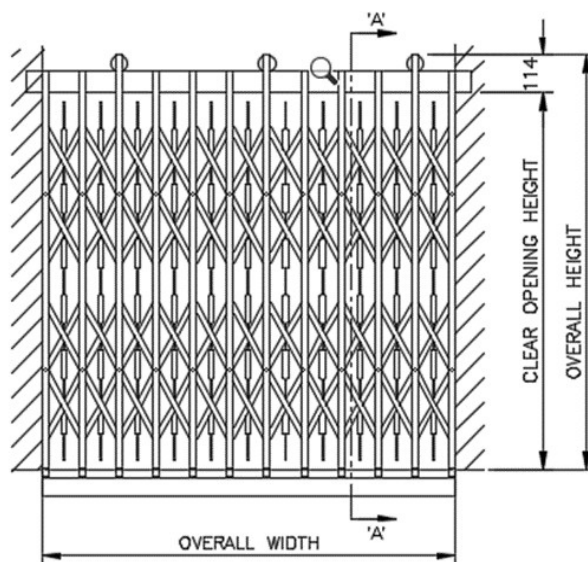


ALL DIMENSIONS IN mm.

MID-BAR GATES



GATE BUNCHED



ELEVATION - GATE EXTENDED



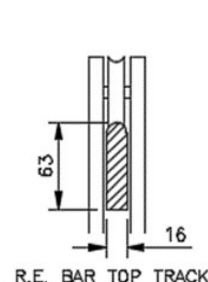
SECTION 'A-A'

MAXIMUM EXTENDED WIDTH	BUNCH	CLEAR OPENING
600	87	513
746	105	641
892	122	770
1038	140	898
1184	157	1027
1330	175	1155
1476	192	1284
1622	210	1412
1768	227	1541
1915	244	1671
2061	262	1799
2207	279	1928
2353	297	2056
2499	314	2185
2645	332	2313
2791	349	2442
2937	367	2570
3083	384	2699
3229	402	2827
3375	419	2956

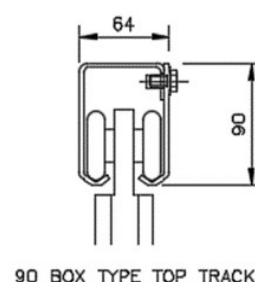
NOTE! ABOVE DETAILS ARE FOR GATES WITH 16mm PICKETS, FOR REQUIREMENTS OF 19mm PICKET GATES, OR FOR LARGER WIDTHS, PLEASE APPLY FOR DETAILS.

TRACK TYPES

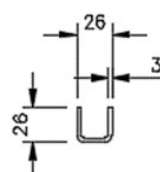
TOP HUNG



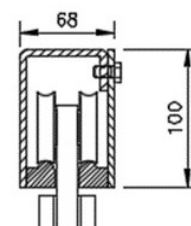
R.E. BAR TOP TRACK



90 BOX TYPE TOP TRACK



CHANNEL TYPE BOTTOM TRACK



100 BOX TYPE TOP TRACK

ALL DIMENSIONS IN MM