

TWIN PUMP MANIFOLDS

TAS



A reliable **A** efficient **A** quality

SMEDEGARD
Pumping Technology

TAS Twin Pump Manifolds

SMEDEGAARD TAS TWIN PUMP MANIFOLDS are ideal when duty/standby facilities are required in heating and chilled water installations such as old people's homes, sheltered housing accommodation, hospitals and schools. These are examples where, if a pump should fail and a standby is not installed, it could cause major disruption to the occupants.

Other examples would be commercial buildings, office blocks and factories. In these installations lack of services, as a result of pump failure, could lead to building shutdown or the stoppage of a production line.

SMEDEGAARD TAS TWIN PUMP MANIFOLDS are available for use with in-line DIN standard flanged pumps up to 125mm bore size B.S.P screwed manifolds are also available. The TAS manifold arrangement allows for individual pumps to be mounted between suction and delivery "Y" pieces, resulting in a very neat, compact, duty/standby package incorporating built-in non-return and isolating valves.

The unique rotary valve assemblies in the manifold "Y" sections allows automatic changeover and manual isolation. If and when maintenance is necessary on pumps 1 or 2, the valves can be manually operated to give complete isolation whilst the motor and seal are removed for inspection. No blanking plate is required to seal the aperture left in the pump body as a result of motor removal and the standby pump can continue operating until duty pump is refitted.

Controls

SMEDEGAARD TAS TWIN PUMP MANIFOLDS are suitable for use with automatic controls. Separate leaflet available on request.

Materials of Construction

"Y" peices body:	C1 GR 17
Valve body:	C1 GR 17
Valve Spindle:	St. St.
Valve Seat:	Neoprene bonded on St. St.
"O" ring seals:	EPDM
Working Pressure:	System pressure 10 bar Pumping pressure 3 bar
Working Temperature:	Max. 110°C

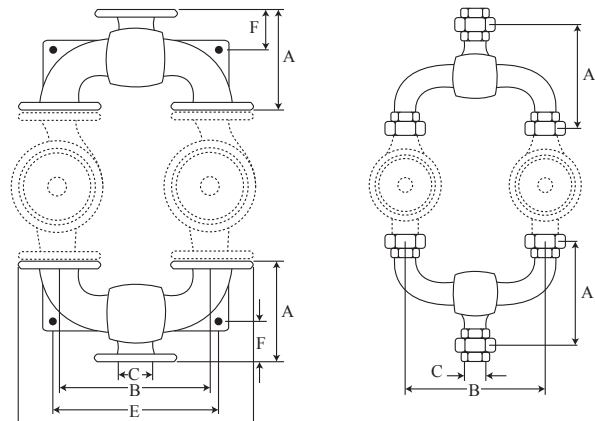
Pressure Loss

Special consideration has been given to the design of the rotary valves regarding frictional resistance. The losses are in fact relatively low and actual figures are available upon request.

Installation

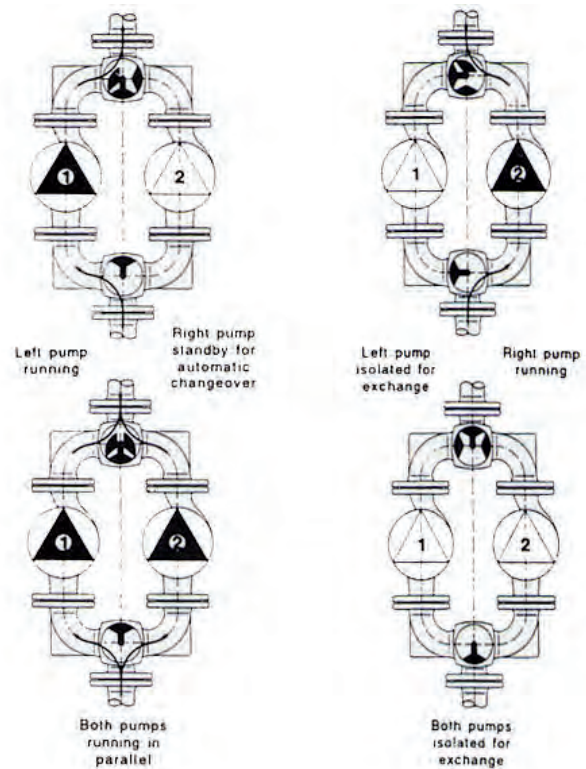
Ensure SMEDEGAARD TAS TWIN PUMP MANIFOLDS are mounted correctly - they are clearly marked "inlet" and "outlet". The valve assembly will operate in any plane, although glandless pumps should always have the motor shaft in the horizontal position.

Dimensions



TAS TWIN	A	B	od	C	E	F	Weight kg
25mm - DIN	165	220	1" B.S.P				5.5
32mm - DIN	170	200	1 1/4" B.S.P				5.5
40mm - DIN	160	280	38	435	309	58	32
50mm - DIN	190	320	50	485	348	77	32
65mm - DIN	235	340	65	525	373	94	50
80mm - DIN	245	370	80	570	420	86	60
100mm - DIN	380	600	100	820	600	180	100
125mm - DIN	380	600	125	850	600	180	100

Examples of Options and Positions of the Valves



It is Smedegaard's policy to continually improve and develop its product range. We reserve the right to change specifications without prior notice. Whilst every care has been taken to ensure the data is correct, no responsibility can be taken for inaccuracies or misprints.