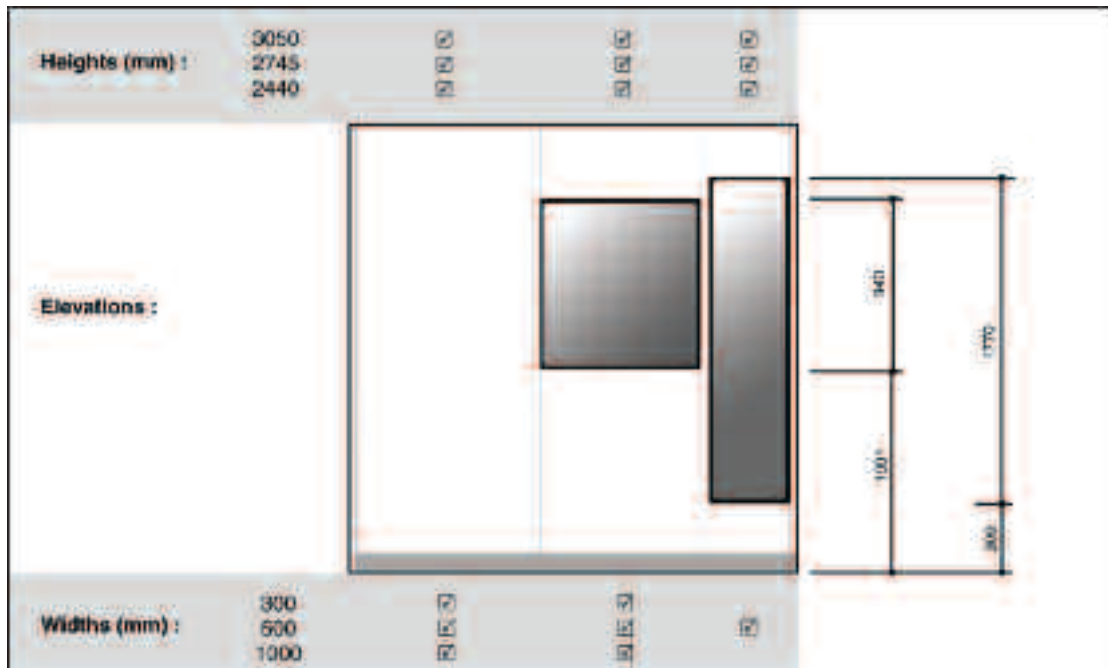


Uniclass	EPIC
L384	C44
CI/SfB	
(22.3)	X



DEMOUNTABLE CLEANROOM PARTITIONING

With flush glazing and flush 2-line joint, Titan panels have been designed for cleanroom applications.

Standard panel dimensions are:
 Heights: 2440mm, 2745mm, 3050mm
 Widths: 1000mm, 500mm, 300mm

This amounts to 21 different size / configurations of panel available as standard. Non standard heights & widths are also available upon request.

ADVANTAGES

Steel panels with composite bonded infill combine to give a strong durable construction.



Titan steel panels with bonded composite infill provide great strength and rigidity.

APPLICATIONS

Titan panels, used in combination with the correct air handling & HEPA filters are aimed at the mid range cleanrooms (ISO 14644-1 class 6,7 & 8).



Panels arrive at site complete ready for mounting. Installation is fast due to the interlocking cleat system used to secure the panels.

FEATURES

Titan panels have been designed to allow individual panels to be removed without affecting the surrounding panels. This makes it an ideal choice for applications where the layout may require alteration / expansion over time.



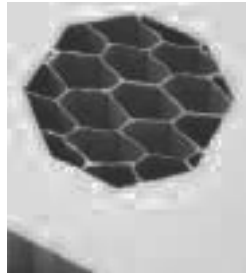
Blinds can be integrated in glazed panels. Option available for magnetic control, maintaining the fully flush surface, or standard thumb turn control.



Titan panel skins are manufactured using 0.7 mm thick CR4 mild steel.



Panels are coated with a TGIC & lead free, polyester powder coat. Standard colour: RAL9010 white



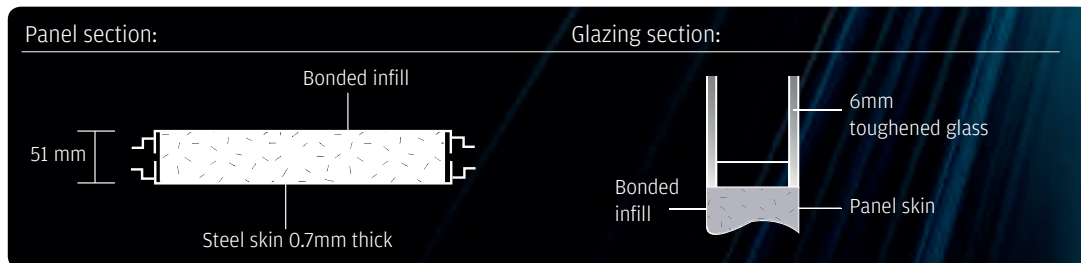
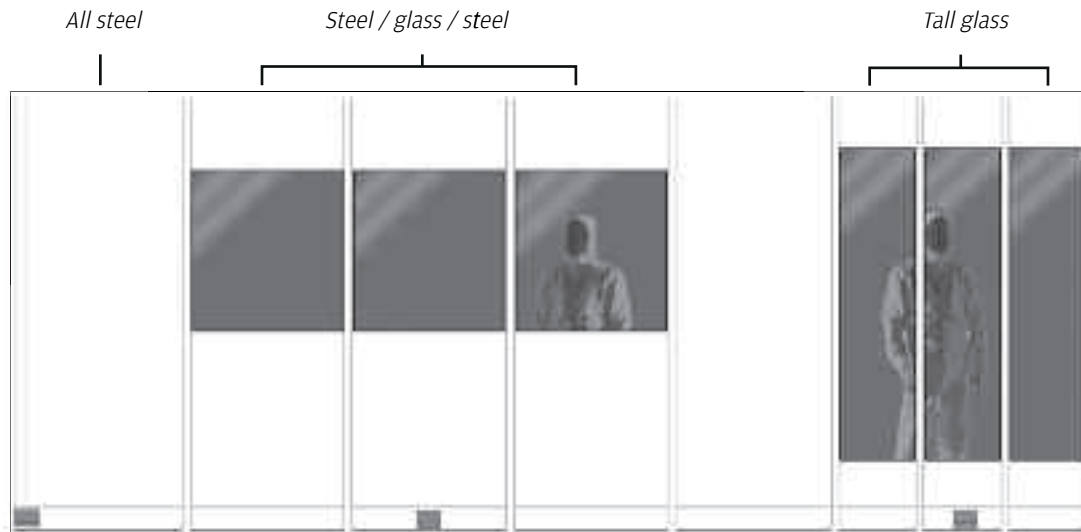
Panels are manufactured with a bonded honeycomb composite infill, providing added strength & rigidity.



Glazed panels use 6mm toughened glass with a black screen printed border & polished edges.

FACTS

Titan panels are available in 3 configurations:



Standard polyester powder coat:
White - RAL 9010

Non standard and corporate colours are also available upon request

- Hinged doors with a variety of furniture options are available
- Ceilings (composite panels or lay in grid tiles)

- UPVC coving with flexible edge
- Blinds fitted within double glazing
- Special glass options available on request
- Special powder coatings, anti static / electro dissipative and antimicrobial

LEE
MODULAR STEEL WALLS

Lee Manufacturing Ltd Building 52, Third Ave., Pensnett Trad Est, Kingswinford, West Mids, DY6 7XF.
Phone: +44 (0)1384 277 441 Fax: +44 (0)1384 273 627 Email: info.uk@troax.com Web: www.leewalls.co.uk

Part of The **TROAX** Group