

Maxi Sky[®] 2



Our complete range of Maxi Sky ceiling lifts is designed to integrate with your care environment, helping to ensure a safe, comfortable and dignified experience for everyone involved. The ceiling lifts are installed, stored and operated so that a single caregiver can transfer patients or residents smoothly without any manual lifting, thereby helping to reduce the risk of injury for themselves and the person in their care.

Doris and Emma - Mobility spectrum



The Maxi Sky 2 Series ceiling lifters are specifically designed for patients and residents that are unable to mobilise without assistance. Please contact Arjo for further information regarding the Mobility Gallery™

Intuitive user interface

- LCD interface to provide instant and clear feedback on the state of the lift.

Quick Connect™ - for fast and secure spreader bar changes

- An intuitive concept, no tools required to change spreader bars.
- Gives access to extensive spreader bar portfolio.

Other special features

- The Safe Working Load (SWL) is flexible and can be adjusted to 272 kg (600 lbs), 200 kg (440 lbs) or 120 kg (265 lbs) to suit the structure of your care facility.
- Enhanced Charging System -ensures it can charge on the tracks so it is always ready for use.
- Nylon lifting strap.

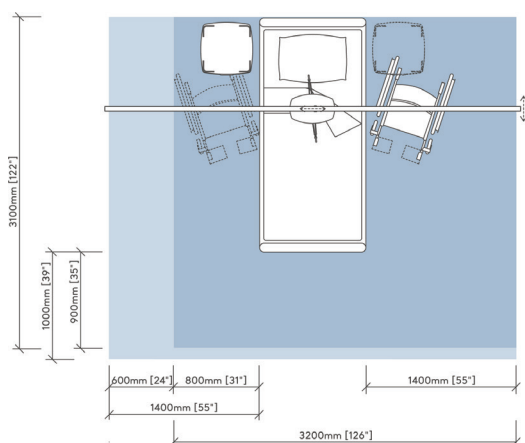
Maxi Sky 2 can be upgraded to include the Infection Control accessories. Contact your local sales representative for more information on the upgrade options available.

PRODUCT SPECIFICATIONS

General	
Weight complete (Four-function model)	12.3 kg (27 lbs)
Weight complete (Two-function model)	11.6 kg (26 lbs)
Operating force of control	< 5 N
Lifting capacity	120 kg (265 lbs), 200 kg (440 lbs), 272 kg (600 lbs)
Strap length	2500 mm (98.4")
Lifting speed	5.1 cm/sec (2.0") without load 4.2 cm/sec (1.7") at 120 kg (265 lb) 3.8 cm/sec (1.5") at 200 kg (440 lb) 3.3 cm/sec (1.3") at 272 kg (600 lb)
Maximum stroke (from ceiling)	2300 mm (90.6")
Horizontal displacement speeds	10, 15 and 20 cm/sec (4", 6" and 8")

Electrical	
Duty cycle	Up/Down Motor: Max 10%, 2 minutes continuously Left/Right Motor: Max 20%, 5 minutes continuously Sit/Reclined Motor: Max 10%, 2 minutes continuously
Charging Method	Dedicated charging station position anywhere on the track layout OR Enhanced Charging Solution (ECR) enables device to charge anywhere on tracking layout, once handset is released
Horizontal axis motor	24 VDC, 62 watts
Vertical axis motor	24 VDC, 360 watts for 2 minutes max.
Noise level for either raising or lowering	max. 61 dBA max. (with or without load)
Rating	24 VDC 15 A
Medical equipment	Type BF protection against electrical shock in accordance with IEC60601-1
Battery type	Sealed rechargeable valve regulated lead acid battery
Battery Autonomy	Provides up to 120 transfers with a load of 100 kg (220 lb), up to 70 transfers with a load of 200 kg (440 lb) , 32 transfers with a load of 272kg (600 lb)
Degree of protection - Lift	IP24
Degree of protection - Hand Control	IP7
Lift - protection class	Shock prevention Internally powered equipment
Battery Charger input	100-240 VAC 50-60 Hz
Battery Charger output	28.1 VDC 1 A max
Battery Charger safety protection	Class 2, double insulated 28.1 VDC 1 A max

SPACE REQUIREMENTS



Blue area shows the minimum working area required for the staff to be able to use the mechanical aids in an ergonomic way from one side.

Light blue area shows required extension of working area to facilitate activities from either side to provide adequate access.

Arjo slings and spreader bars are a vital part of our resident/patient lifting systems. A variety of slings and spreader bars provides a range of different choices when lifting and transferring residents/patients.

For more information about our accessories, please contact your local sales representative or visit www.arjo.com.