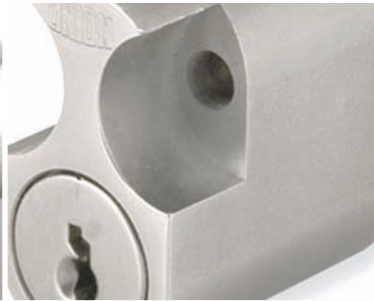
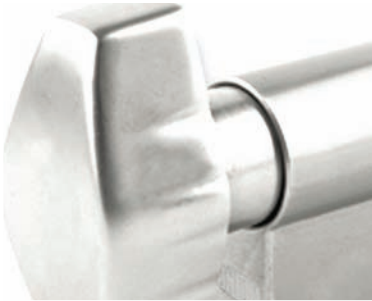




UNION keyULTRA™ Patented Master Key Cylinders



ASSA ABLOY



Extensive range of designs for every application



UNION keyULTRA™ 6 pin Master Key Cylinder

How patented keys protect

If keys can be borrowed a duplicate can be cut locally, then the borrower becomes an unauthorised master key holder.

Cylinder systems that rely on copyright protection can no longer be legally protected from others manufacturing and selling 'pirate' key blanks. Only cylinder systems that offer Patent protection for their keys can truly protect against illegal key blank duplication.

48 hour lead time for:

- Order quantities <100 pieces
- Standard finishes
- Standard lengths (up to 80mm)
- Euro oval singles doubles (any function)
- 5 working day lead time for other cylinders and quantities

Key Cutting

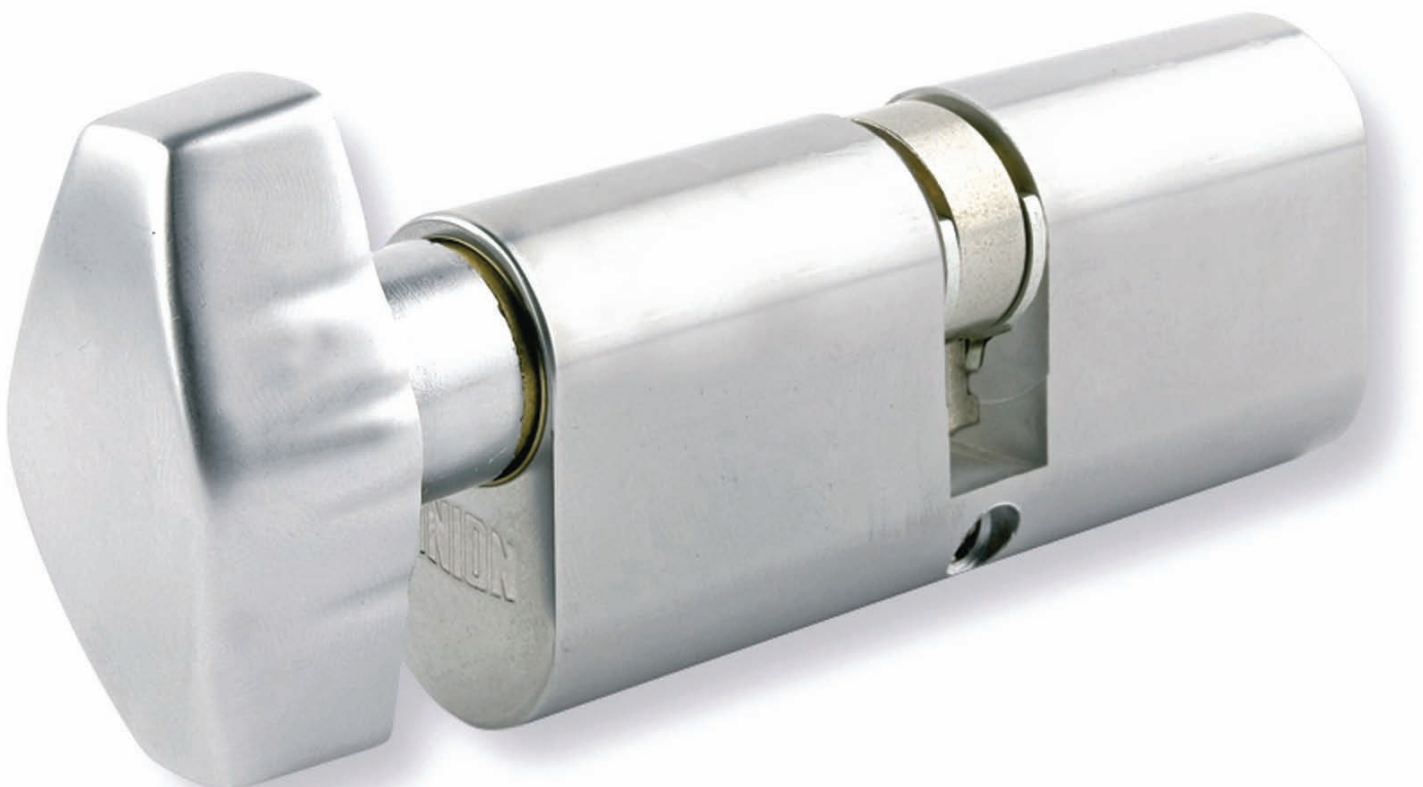
- 48 hours <100
- 5 working days >100

Patent protection prevents unauthorised duplication of the key

- Manufacturer can impose restrictions on key copying
- Manufacturer can control who has access to key cutting
- Keys cannot be cut at any high street shops without legal implications

UNION keyULTRA™ Master Key cylinders have one of the longest patents in the market protecting:

- The key and key blank with DuraPIN™ technology
- The cylinder assembly with DuraPIN™ technology and the correct patented keys to work with it



keyULTRA™ features



Highest key related security

Key related security as per BS EN 1303:2005: Grade 6

- 6 pin master key cylinder
- Key differs in excess of half a million
- Solid nickel silver keys
- Easy grip, oversized key bow
- Strong durable key design
- Self lubricating material for enhanced wear resistance
- Nickel silver differ pins for durability and wear resistance

Highest attack resistance

Attack resistance as per BS EN 1303:2005: Grade 2

- Resistance to attack by plug extraction
- Resistance to attack by drilling
- Resistance to attack by chisel
- Resistance to attack by twisting

Other security features

GuardPIN™ bump resistance

- Bump resistance is achieved by using GuardPIN™ (patent pending)
- Pick resistant
- Paracentric key way
- Mushroom drivers
- Anti-pick notches in differ pins

Features and benefits

Long life patent (Patent No. 2028)

19 years of protection and security, one of the longest patents available on the market

Functions and turns

Meets modern specification requirements

Comprehensive product range

(padlocks, cam locks, cabinet locks, scandinavian cylinders, etc.)

One stop shop for all keyULTRA™ requirements

Attack resistant

Chisel, twisting, drilling, plug/cylinder extraction, bumping

British made



Quick response, well respected brand, strong foundations for over 170 years

Extensive MK capability

Suitable for small scale jobs to extensive projects (schools, hospitals, offices, etc)

Technically advanced

Bump resistant GuardPIN™, paracentric keyway, DuraPIN™ technology, anti-pick notches in pins and drivers, tested to half a million cycles

48 hour service

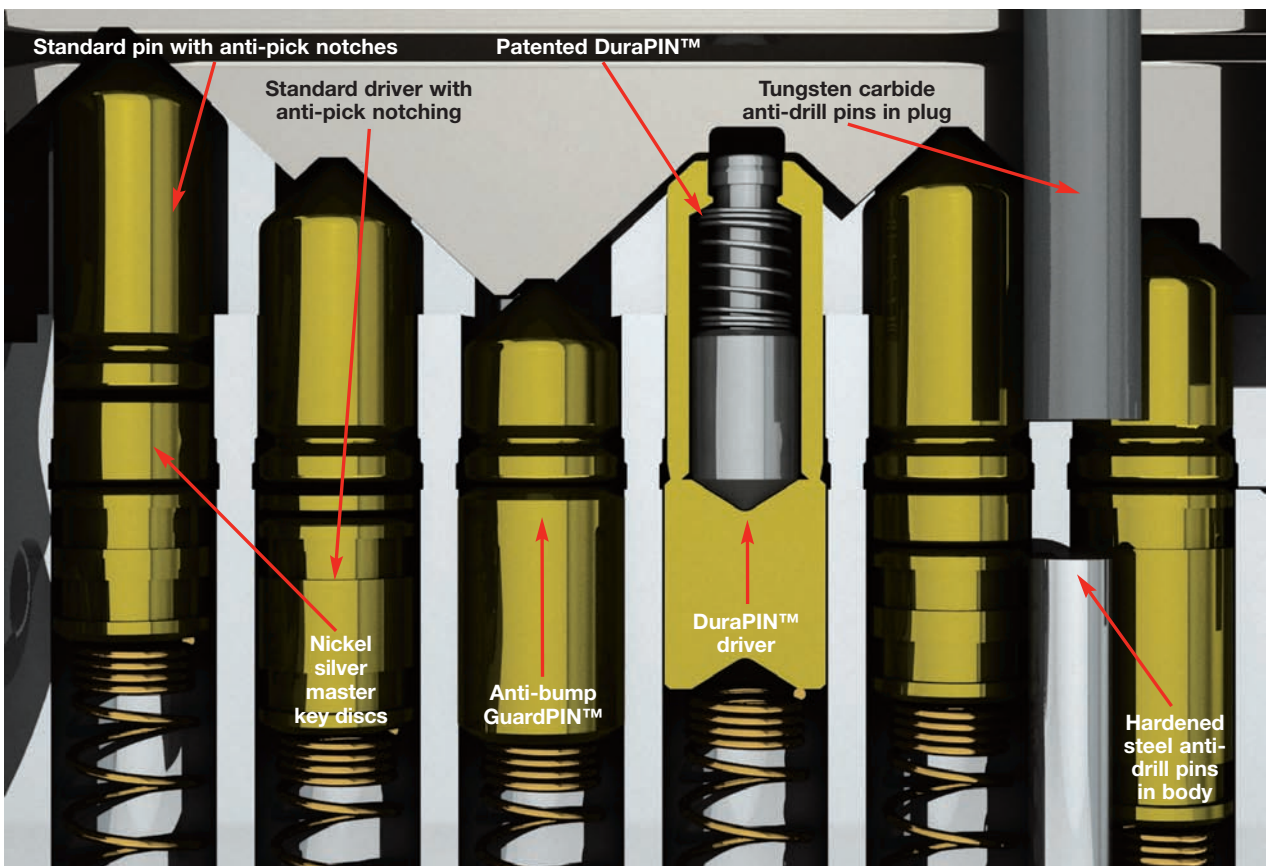
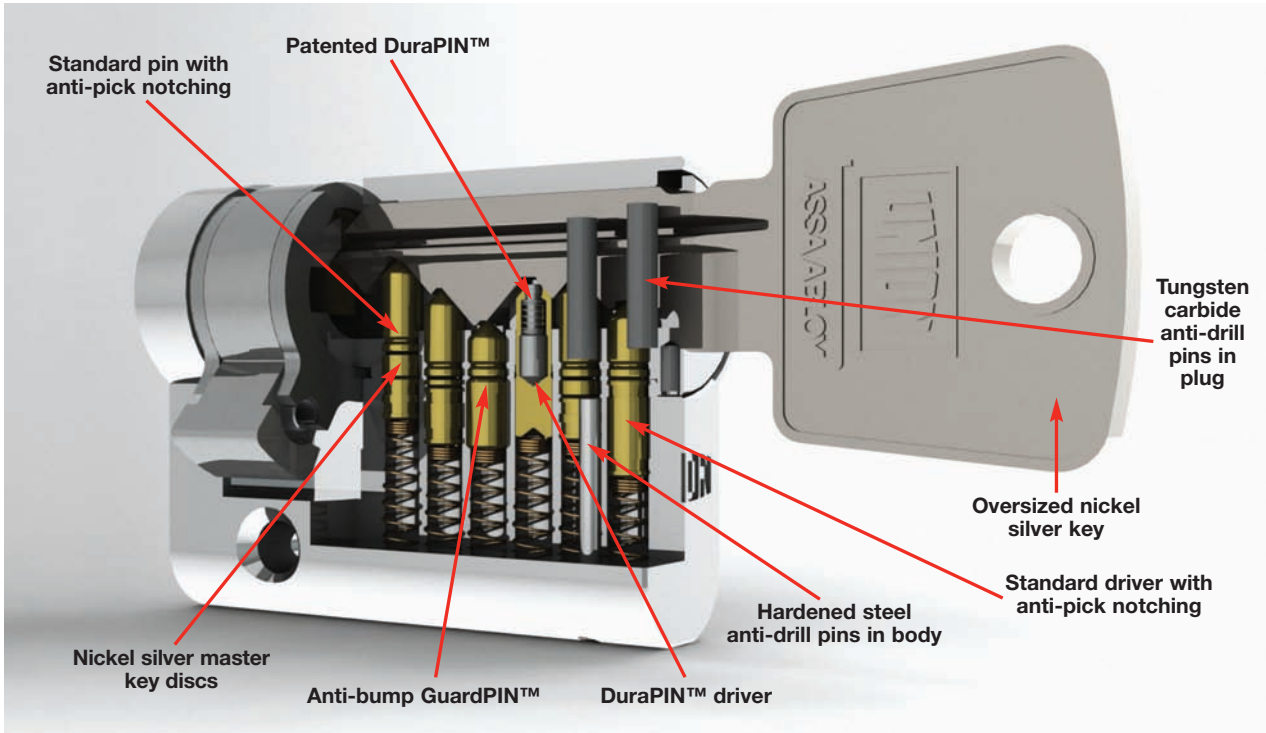
Focused process to receive order and despatch within 48 hours - conditions apply



DuraPIN™ Technology

DuraPIN™ technology offers unique levels of patented protection

- **GuardPIN™** (patent pending)
GuardPIN™ is an enlarged diameter driver, designed to prevent a bumping attack by eliminating the transfer of energy between pin and driver
- **DuraPIN™** (patented)
DuraPIN™ is a two piece, telescopic pin that works in combination with a special patented cut on the key



Cylinder designs for every application



Euro Double



Euro Key & Turn



Euro Single



Euro Single Turn



Oval double, key & turn, and single cylinder



Turn designs available



High Security Padlocks



Scandinavian Inner



Scandinavian Outer



Screw In Cylinder



Rim Cylinder

Singles, doubles, key & turns up to 170mm in total length, 85mm to the center of the cam

Available functions

Clutch release function

- When the key is inserted into the cylinder, the thumbturn disengages by use of a clutch mechanism
- This allows the door to be unlocked even if the thumbturn is being held in the locked position from the inside – ideal for situations where a non key holder could hold the thumbturn in the locked position to prevent the door being unlocked

Classroom Function

- Provides the same functionality as clutch release plus
- The thumbturn can be rotated in one direction only via a ratchet mechanism in the turn side of the cylinder
- Person can only unlock the door from inside – ensures that somebody inside the room cannot lock anybody out but can always escape in case of emergency

Construction Keying

- Construction keying allows the contractor of a project full access during the construction period
- On first operation of the building owner's key, the construction key will be permanently disabled

Part numbers

J - KUET 3535 SC

| Packaging Code | Turn Code | Product Code | Length | Finish |
|--|-------------------|---------------------|--------|--|
| J - Boxed | - Round (default) | KU ED = Euro Double | | UNION keyULTRA™ cylinders are available in the following finishes: SC - Satin chrome PL - Polished brass |
| All UNION cylinder products are supplied boxed | 1 Diamond | KU ES = Euro Single | | |
| | 2 Signature | KU ET = Key & Turn | | |
| | 3 Large | | | |
| | 4 Wave | | | |



ASSA ABLOY

UNION Architectural Hardware

The Meadows, Cannock Road, Wolverhampton WV10 0RR

Tel: 0845 223 2124 Fax: 0845 223 2125 Email: info@uniononline.co.uk Web: www.uniononline.co.uk

ASSA ABLOY is the global leader in door opening solutions, dedicated to satisfying end-user needs for security, safety and convenience