

Aztec Natural Stone Rainscreen

Our Aztec Stone Rainscreen system is a fully tested, A1 fire rated, ventilated facade solution available with a large range of natural stone types.

This sustainable facade solution is available in 20; 30 or 40mm stone panels. Our bespoke system is available on NBS Source to assist Architects and Specifiers.

The Right System.. For your Project.

Stone Cladding Systems

A snapshot



Stone Cladding Systems are Natural Stone Rainscreen specialists primarily focused on the Public & Commercial sectors. We supply the whole of the UK with stone from all over the UK & Europe.

SCS are an independently owned company that has grown steadily since forming in 2016. Through successful project delivery and continued customer focus we have enjoyed success since inception and as we continue to expand we are improving our supply chain as shown by the recent partnership with Hilti GB

Experience

- Schemes ranging from 100-5000 sqm
- Hotels, offices, retail & public buildings
- Fire Stations & Universities
- Residential buildings

Value

- Advice to make the most out of your budget
- Challenge the design and construction techniques
- Unlocking and delivering previously unviable schemes

Certainty

- Full understanding of the construction process
- Established supply chain
- OEM Partnership with Hilti GB
- Delivering on VE and programme savings
- Reliable single point of contact
- Hilti backing & design Partnership

Works Sustainability

- PV Cells supplying the office
- Waste segregation & reduction
- Fully reusable & Recyclable system



Why Stone Rainscreen

- Fast track construction
- The most sustainable of all common façade materials
- Universal substructure
- Non-combustible A1 Fire Rated
- Varied panel options – over 25 stone types
- Cost effective
- Tested to the latest CWCT standards
- Flexibility in design
- Low Maintenance
- Low Weight~55kg per m2 20mm &~75kg per m2 30mm
- Can accommodate drainage, electric and phone services, water pipes etc.
- Not on Critical construction path
- Recyclable & Reusable

Aztec Key features



SCS STONE
CLADDING
SYSTEMS

- Universal substructure
- Fast track construction
- Varied panel options
- Cost effective
- A1 Fire certification
- Reduces Solar gain
- Low Weight
- Sustainable
- Allows for air and thermal movement
- Easy access to drainage and services
- Not on Critical construction path
- High Strength



SCS STONE
CLADDING
SYSTEMS



Phone
01335 361000

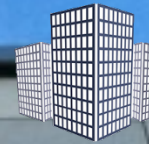


Mail
sales@scs-stone.co.uk



Location
Westwood, Ashbourne, DE3 6AZ

The System



SCS

STONE
CLADDING
SYSTEMS

Basic Components:

1. Stone Panel
2. Vertical T-rail 120mm x 60mm
3. 4x4 powder coated stainless steel clips
4. Stainless steel self-tapping screws
5. Support brackets

Aztec a self-supporting attachment system which enables 20mm, 30mm or 40mm stone panels to be fitted by means of a black powder coated unique stainless-steel clip.

Compared to other similar systems on the market the Aztec system is a quick and easy system to install as there are no horizontal rails. Attachment allows all panels to move independently.

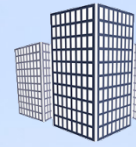
This system is very versatile and quick to install, besides providing an excellent quality/price ratio.

Stone cladding Systems have an OEM partnership with Hilti and so can offer the complete attachment [acxkage at excellent rates and with a warranty from the wall to stone.

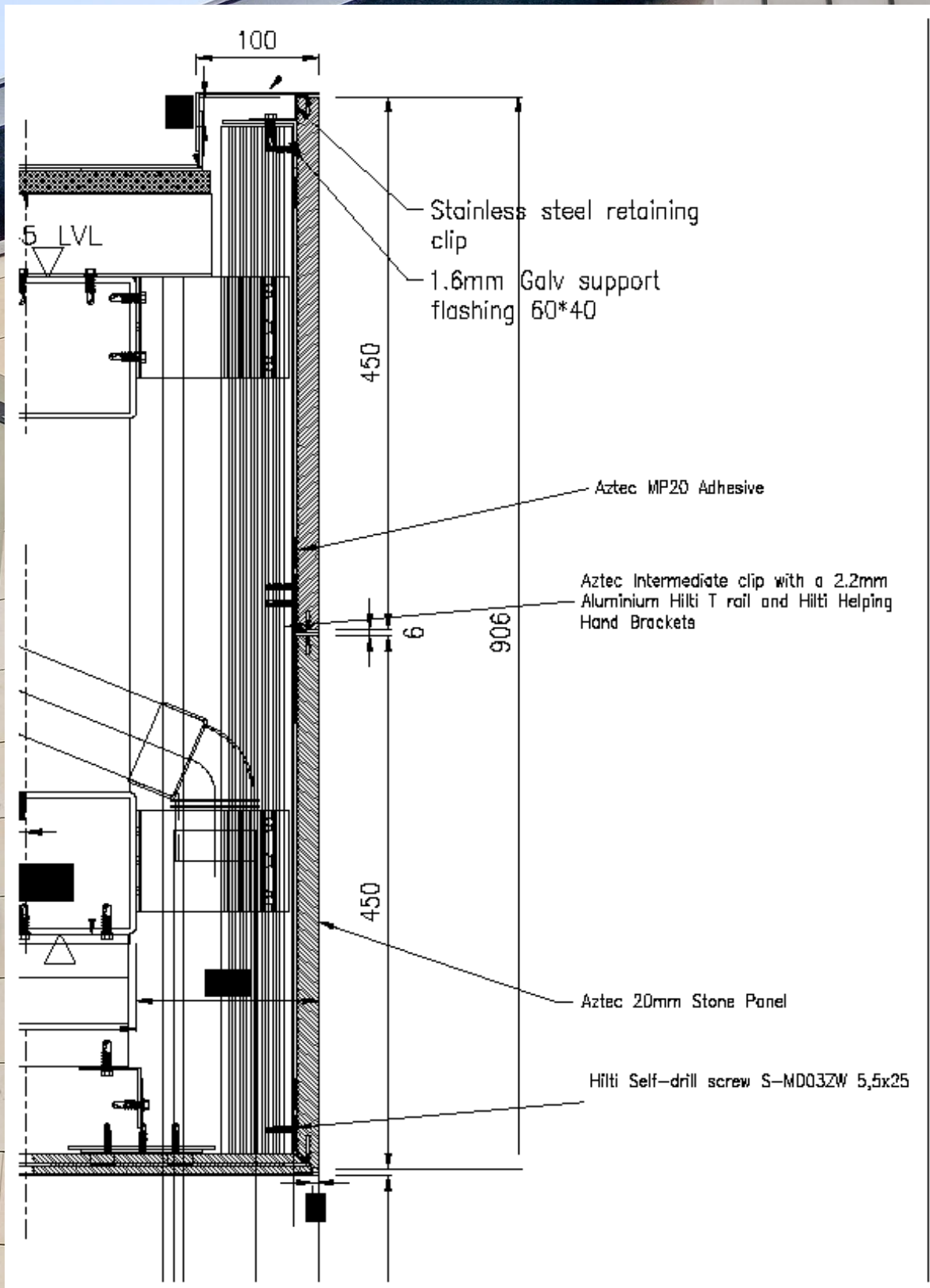
It has been developed with the view to making the structure as light as possible, whereby the system only adds 1.5 Kg/m² of weight to the stone, which means a ventilated facade weighing only 55 Kg/m².



Typical Aztec details



SCS STONE
CLADDING
SYSTEMS



Sustainability



Considering various factors, including the environmental impact, energy efficiency, recyclability, and durability, stone comes out top of the sustainability charts every time.

It is **THE most sustainable building material on the planet** with carbon content at only **240 kg CO₂ e per Cu.m.**

Compared with

Bricks @ 350;

Glass @ 3,600:

Aluminium at 18,000.





New Waverley, Edinburgh – Peakmoor Sandstone





Parliament Square,
Liverpool – Blanco
Pila Granite



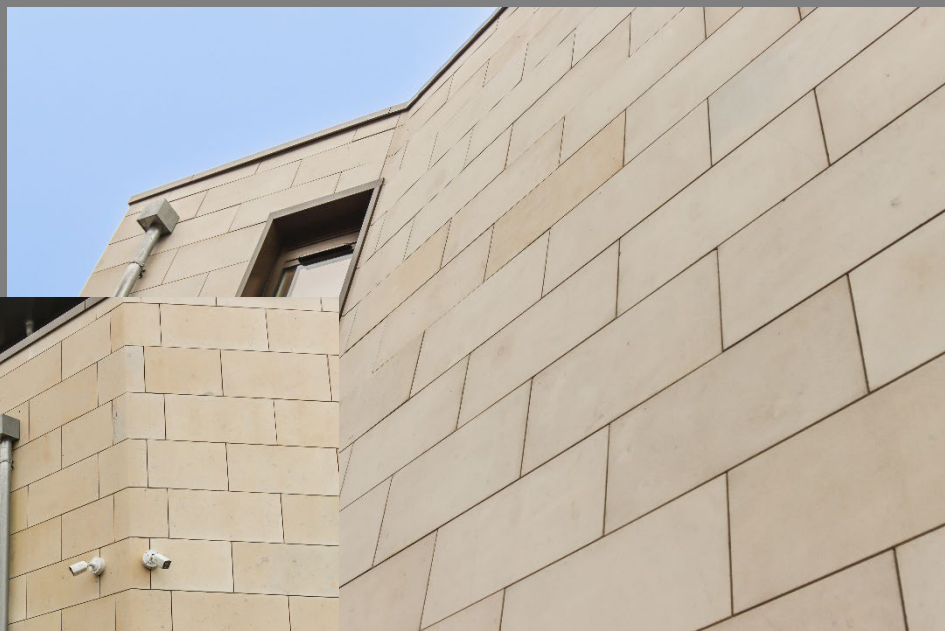


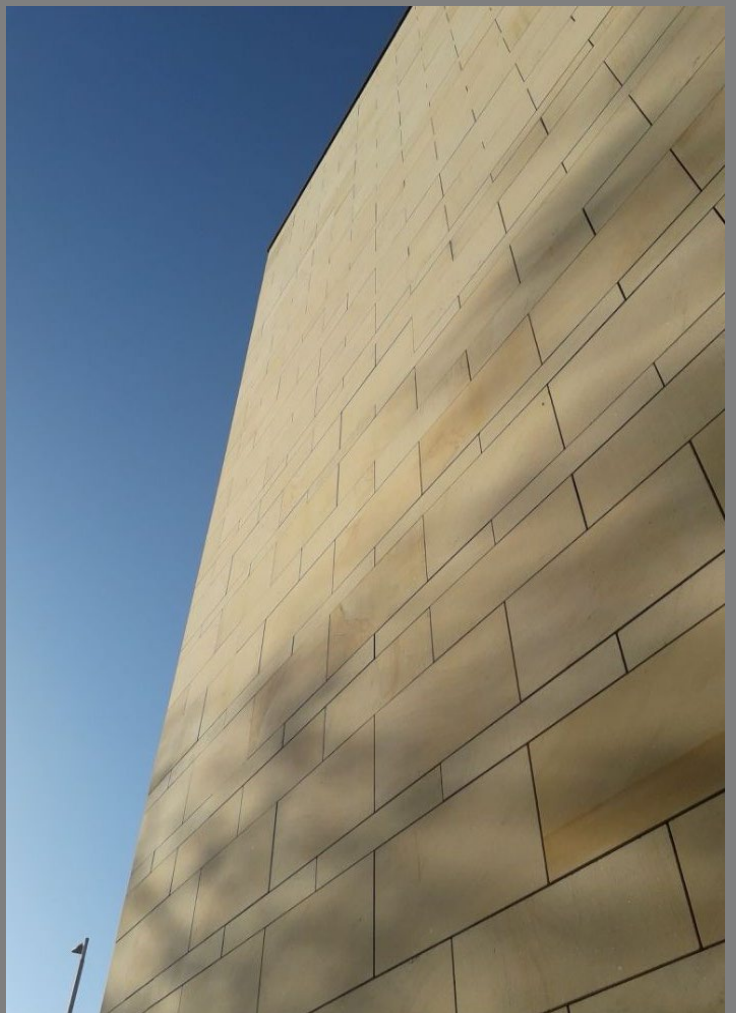
Benenden School, Kent – Jura Limestone



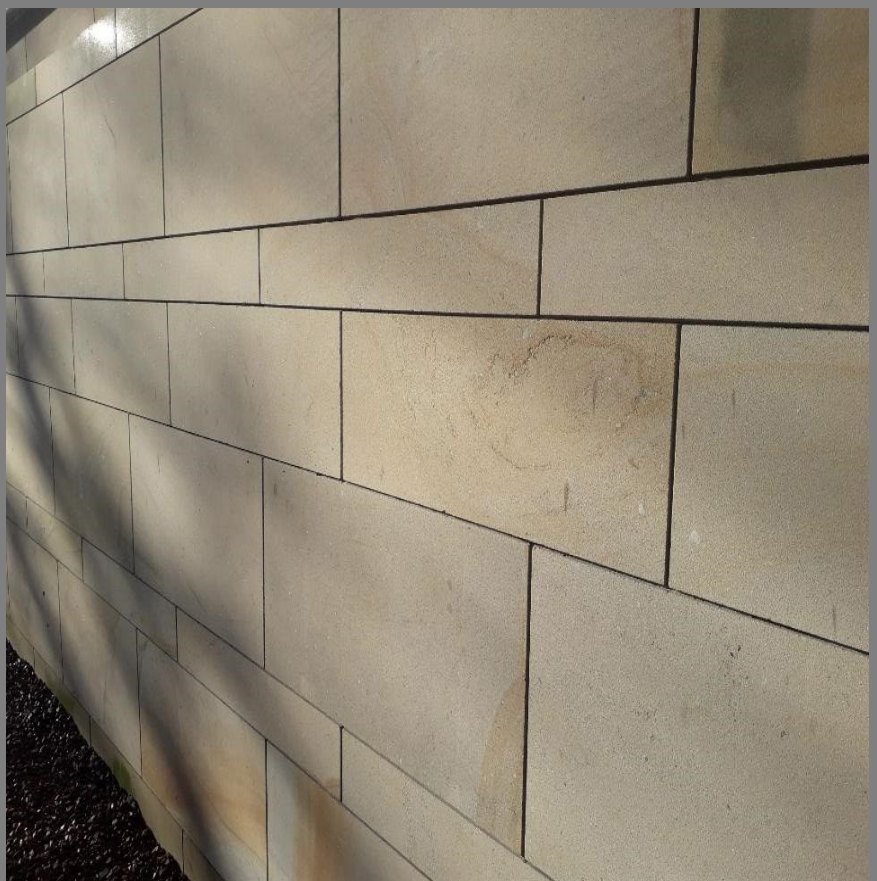


North Parade, Bath –
Bath Basebed



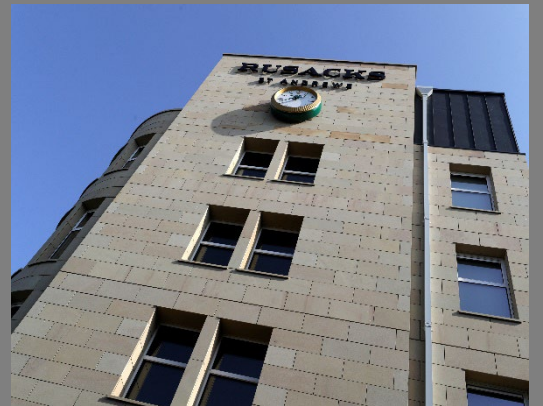


Balshagray Gardens, Glasgow – Bela Sandstone





Rusacks Hotel, St.Andrews – Peakmoor Sandstone





Bank of Asia, Manchester – Marga Light Granite



Aztec - Frequently asked questions



What thickness is the stone?

Aztec is available in 20, 30 and 40mm, dependant on stone type and panel size.

What are the sizes of the joint?

Horizontal and vertical joints are designed at 6mm.

What are the standard sizes of the stone panels?

The standard sizes are up to 1200x450mm, but most sizes within reason can be accommodated.

Is the system tested?

Aztec has been fully tested to CWCT Standards for wind loading to 3600 pascals – hurricane speeds ! As well as to A1 fire rating

Is the system available in portrait and landscape?

Yes, because this is a clip and rail system, **Aztec** is equally at home in both formats and can be mixed on the same building.

Are cills; soffits and copings available with the system?

Yes they are

Is the system quicker to install than traditional handset stone cladding?

Aztec is a dry fix system and is much faster than traditional building.

Is the system available with radius panels?

Absolutely. Solid corners as well.

