

LOW VOLTAGE WC FLUSHVALVE KIT

With Mains PSU

WC03-014

The DVS WC no-touch flushing system is an electronically operated drop valve which replaces the traditional syphon and delivers a WRAS Approved 4L single flush from the cistern to the lavatory bowl.

PRODUCT NUMBER

WC03-014 WC Flushvalve Kit

TECHNICAL DATA

Flushvalve:

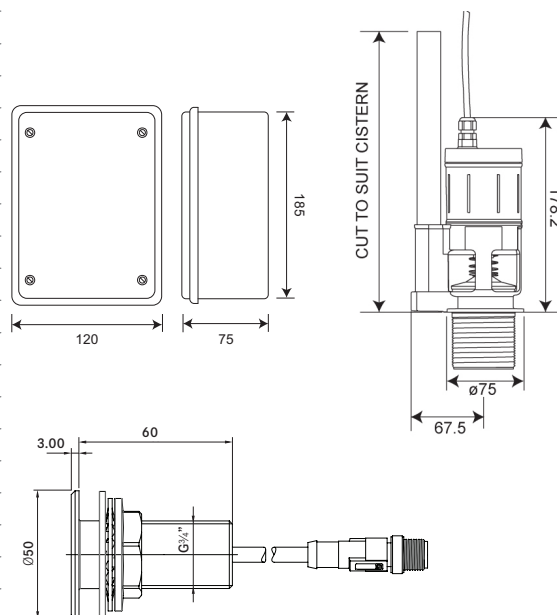
Weight	1.05 kg
Material	ABS Plastic
Power supply	Through WC control box
Outlet size	2"
Internal overflow	Yes
Type of operation	Programmable sensor operation
Type of mounting	WC flush valve
Functional principle	Electronic self closing
Failsafe close	Yes

Control Box:

Weight	1 kg
Material	ABS Plastic
Run Times	*Please refer to AC02-037 Tech spec sheet*
Power source	6V DC Mains PSU
IP rating	54
Amps	0.14A (MAX)
Voltage	6V DC

Sensor:

Material	316 Stainless Steel
Surface finish	Brushed
Gross weight	0.2 kg
Operation type	A-IR (Active Infrared) touch-free
Overall dimensions	60mm (L) x Ø50mm
Thread diameter	Ø26.44mm (¾" BSP)
Type of mounting	Wall mounted (Ø27mm drill hole required)



ALL DIMENSIONS IN MM

2018-09-06, Dart Valley Systems



For Adjustable sensor settings please refer to AC02-037 Tech spec sheet.
(Contact Dart Valley Systems)