

SDS Weholite

Attenuation Systems

Stormwater attenuation and CSO flood alleviation are a fundamental component of Weholite's business and are used across all sectors.

Designed for both online and offline situations, Weholite attenuation systems are used extensively by most major developers and have been adopted by all of the UK Water Companies*.

- Suitable for stormwater, sewerage and CSO applications
- Available for online and offline attenuation
- Designed in line with Sewers for Adoption
- Ultra-strong fabrication
- DWF channel
- Anti-slip flooring
- Bespoke design optimised
- Fully tested factory built components



Weholite attenuation systems are used across the whole construction industry, including the Water Industry Capital Investment Programme (AMP), for water management infrastructure.

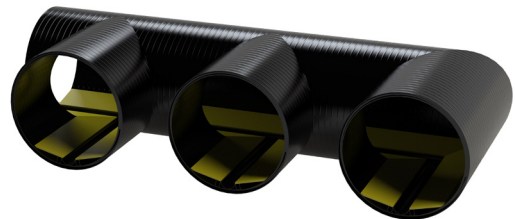
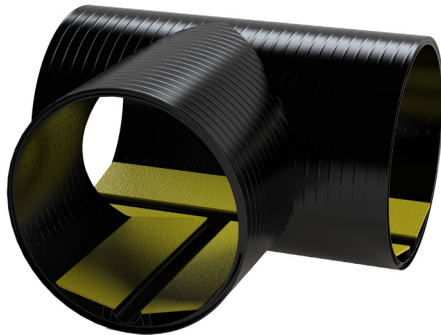
Weholite attenuation systems are especially valued by the housing sector where they provide safe water management to housing developments in the form of stormwater attenuation tanks,

pumping stations, soakaways and flood relief culverts.

Through adherence to the current edition of both Sewers for Adoption and the Civil Engineering Specification for the Water Industry (CESWI) as the guideline documents for this sector, projects can be approved under sections 104, 106 and 38 with both Water Companies and Local Authorities.

| Features | Benefits |
|--|--|
| For use with stormwater, sewerage and CSO. | Extensive range of applications. |
| Available for both online and offline attenuation. | Suitable for all attenuation installations. |
| Designed in line with Sewers for Adoption and/or specific Water Company requirements for S104 adoption*. | Meets industry requirements. |
| Ultra-strong fabrication. | Designed to resist groundwater pressures. |
| DWF channel with anti-slip flooring available. | Ensures safe movement within the tank. |
| Spatial optimisation on each and every project. | Major programme savings. |
| Fully tested, factory built components. | Guaranteed water-tight performance. |
| Concrete surround not required. | Saves time and cost and improves carbon footprint. |
| Full structural design package available. | Weholite support ensures optimal performance. |
| Pre-installation meetings and site services. | Weholite support ensures efficient installation. |

*All UK Water Companies have differing specifications and requirements. Individual requirements of water companies are always taken into account during the design and approvals process to ensure conformity. Please contact SDS for specific advice.



WEH AT DS/0125