



Stone Grey Panels with Kiwifruit Doors



Zest

Uniclass	L2226		
Ci/SiB	(22)	X	
August 2011			

A stylish, yet practical cubicle system, Zest has been developed to meet the demands of modern washrooms. Complete with DDA compliant fittings.

Made to measure

High performance melamine faced chipboard

Increased overall cubicle height of 2100mm

Reduced floor clearance of 100mm

Four exciting new door colours



Indicator Face



Set-Back Pedestal



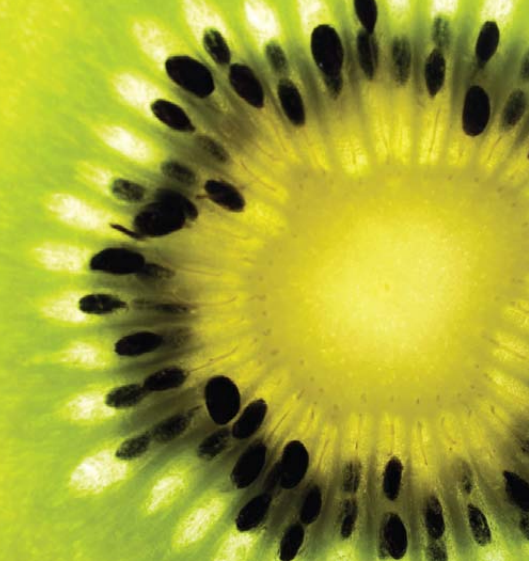
DDA Compliant Latch



Hidden Safety Hinge



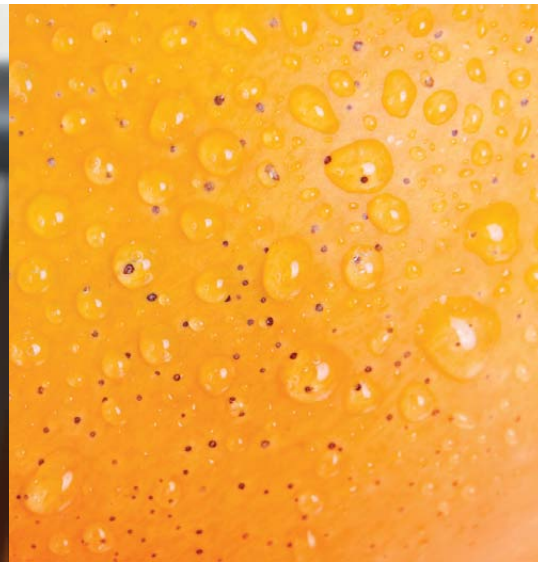
www.washroomcubicles.co.uk/zest



Matching 'Stone Grey' fittings



'D' shaped headrail

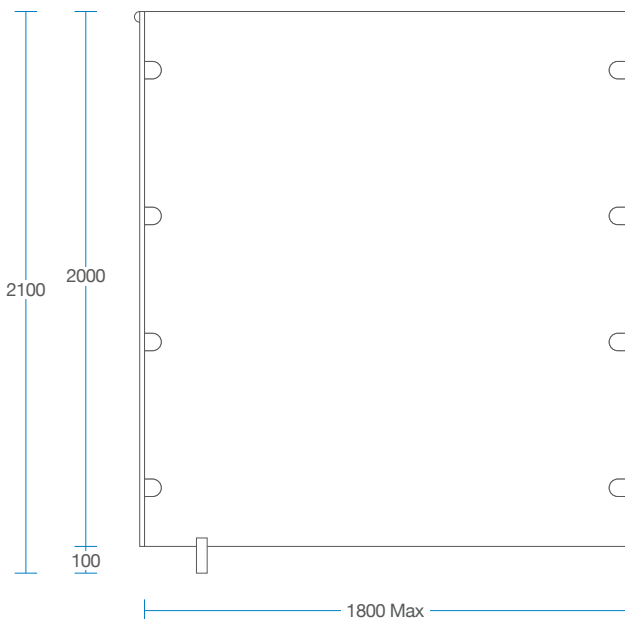
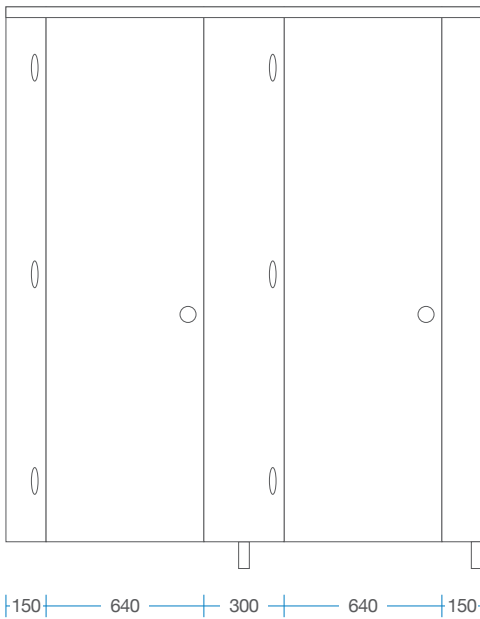


Safe and secure hinge fixings



Matching vanity unit kits





Manufacturer

Cubicle Centre Ltd, Unit 33 Caldervale Business Park, Ravensthorpe, West Yorkshire, WF13 3JL
 Tel: (01924) 457600 Fax: (01924) 437600
 Email: sales@washroomcubicles.co.uk

Specification

Overall cubicle height: 2100mm including a 100mm reduced floor clearance to both door and partition

Doors: 18mm thick, high performance Melamine Faced Chipboard (MFC) - hinges through-bolted to front panels providing added strength and durability

Partitions: 18mm thick, high performance Melamine Faced Chipboard (MFC) - maximum depth of 1800mm can be achieved

Edging: High impact 2.0mm PVC edging to all panels - Colour: Stone Grey

Fittings: Stylish 'D' shaped head-rail, heavy duty set-back pedestals, robust DDA (Disability Discrimination Act) compliant cubicle latches, combined hat and coat hook

Colour options

Stone Grey or Coffee Panels with a choice of four Door colours: Blueberry, Kiwifruit, Mango and Dragon Fruit. Two woodgrain options are available to order for cubicle doors only

Standard Size Guide

Overall height:	2100mm
Partition height:	2000mm
Partition depth:	1800mm (max)
Door width:	690mm
Door opening:	640mm
Start / End Fascia:	150mm
Middle Fascia:	300mm
Floor clearance:	100mm