

Walling

Bradstone Travertine



Developed to give the authentic appearance of travertine natural stone.

- Perfect for adding value and visual appeal to any commercial or domestic build
- Produced in moulds originated from natural stone masters for a high quality aesthetic detail
- Face size 444 x 219mm to give a 6mm joint
- Block width 90mm to keep unit weight below 20kg for manual handling regulations
- Quoin blocks available
- Return ends available for openings
- Half blocks 219 x 219 face size are available, as due to rounded arise, cutting is not ideal
- Available in two attractive shades, Tuscany and Limestone Buff.

Applications

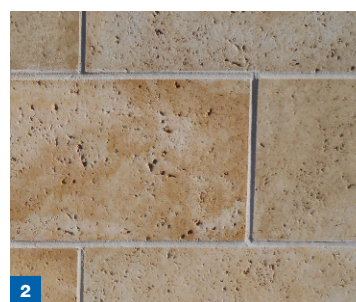
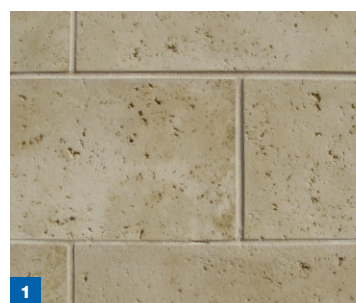
The Travertine walling range is suitable for commercial, public and domestic building applications.

Manufacturing standard

Our walling range is manufactured as a wet cast reconstructed stone product and is compliant to European Standard BS EN 771-5.

All Aggregate Industries' products are manufactured in accordance with ISO 9001 with factory compliance to ISO 14001.

A range of masters is used to avoid noticeable repetition of profiles. Blocks in this finish are frogged.



Colour swatches



1. Limestone Buff
2. Tuscany

Travertine walling

Course height (mm) (Co ordinated)	219	Half block	219 Quoin
Lengths (mm) co ordinated	444	219	444 x 219
Walling area m ² per pack	7.2	6.4	n/a
Run/rise (m)	n/a	n/a	10.8
No per pallet	72	128	48
Pack weight (T)	1.39	1.23	1.22
Colours available	Tuscany Limestone Buff	Tuscany Limestone Buff	Tuscany Limestone Buff

Bradstone Travertine

Performance

Dimensional tolerance	D1	
Mean normalised strength	>20.0N/mm ²	
Net dry density	2125 kg/m ³	
Thermal conductivity <small>(based on tabulated values from BS EN 1745)</small>	Internal	1.45 W/mK
	External	1.60 W/mK
Water vapour diffusion coeff	50/150	
Moisture movement	<0.8mm/m	
Water absorption by capillarity	<9.0g/m ² .s ^{0.5}	
Reaction to fire <small>(classified to EN 13501-1)</small>	A1	
Durability	Frost resistant	
Bond strength	0.15 N/mm ²	

Table 1 - Thermal resistance

Width (mm)	Form	Thermal resistance (m ² K/W)	
		3%	5%
90	solid	0.062	0.056

Table 2 - Unit weights

Width (mm)	Face size	Form	Unit weight* (kg)	Built weight (kg/m ²)
90	444 x 219	Solid	19.4	205
Quoin	444 x 219	Solid	25.0	205
	x 219 return			

*based upon 5% moisture content by volume.

Table 3 - Fire resistance (hours)

Width (mm)	Form	Load bearing	Non load bearing
90	Solid	1	2

based upon table 14 BS5628-3 single leaf.

Table 4 - Sound insulation

Width (mm)	Form	Rw dB
90	Solid	43

based upon mass law calculation.

Bradstone Travertine

Sustainability and local sourcing

Energy use: Aggregate Industries is at the forefront of sustainability and has committed to reduce carbon emissions by 20% by 2012 based on a 2008 base line.

Recyclable: 100% of the product can be recycled thus reducing the amount of material that is sent to landfill.

Manufacturing location: produced in the UK, with locally sourced materials under strict environmental and social legislation, for local supply.

Responsible sourcing: Aggregate Industries is the first company in the world to achieve a BES 6001:2008 Responsible Sourcing Certificate from BRE Global. Products are assessed on:

- quality management
- environmental management
- health and safety management
- greenhouse gas emissions
- minimising raw material usage
- labour practise
- biodiversity
- community engagement.

Key aggregate and recycled content

Our range of walling is manufactured principally from naturally occurring aggregates, ordinary Portland cement and colouring pigments, cast in moulds.

Generic green guide rating

There is currently no generic rating for reconstructed stone walling.

Policies

Aggregate Industries' policies on the environment and community, health and safety and sustainable solutions for different product applications can be viewed on our website www.aggregate.com

Installation standard

Health and safety: Size for size our walling is heavier than most facing bricks, making it more comparable with solid wire cut bricks. Though it is generally lighter than limestone and sandstone masonry, due allowance for the weight of the larger blocks should be made when moving, handling and working with the material on site. Special care should be taken when handling and lifting heavy fittings.

Maintenance and cleaning

Aggregate Industries can supply on request advice on general maintenance. Aggregate Industries also offer an anti-graffiti coating service which will protect solid, absorbent and painted surfaces against graffiti attack and other contamination. For more information on the service call our sales office on 01285 646900.

COSHH data

Full COSHH data on Aggregate Industries' products is available on request. Please call the technical helpline on 01285 646900.

Technical support

Detailed guidance and assistance with the preparation of specification and use of Bradstone reconstructed walling products are available through the sales offices. A free technical service is also available.

Call technical services on 01285 646900.

North End, Ashton Keynes,
Wiltshire SN6 6QX

Tel: 01285 646900

Fax: 01285 646891

www.aggregate.com



The information contained within this publication was accurate at time of production. However, Aggregate Industries reserves the right to introduce modifications or changes to detail at any time without notice. No charge is levied for this publication or advice therein, and accordingly the company, its employees and authorised agents can accept no liability whatsoever, either indirectly or directly arising from the use of its products in connection with any information or advice contained in this guide.