

Charcon Academy flag paving



Affordable commercial paving that doesn't compromise on aesthetics.

- Low cost textured paving
- An economical solution for commercial paving areas
- Using only local aggregates to the factory for a reduced carbon footprint
- Good aesthetics with no added pigment
- Hydraulically wet pressed manufacturing process.

Applications

Academy paving is suitable for pedestrian areas. With the smaller element pavers, it is also suited to areas with occasional car, HGV and mechanical sweeper overrun. For correct choice of flag size to suit your application, refer to BS7533 Part 8. Refer to technical department for advice on applications: Tel:01335 372222.

Manufacturing standard

Academy paving is manufactured using a hydraulically wet pressed process and is manufactured in accordance with and complies with all relevant sections of BS EN 1339: Precast Concrete Flags – requirements and test methods.

Aggregate Industries fully operates an accredited Quality Assurance scheme, certified to BS EN 9001:2008 which is independently and regularly assessed by BSI (British Standards Institution). All Aggregate Industries manufacturing sites are also certified to BS EN 14001 Environmental Management Systems.

Performance with slip resistance

Unpolished slip resistance values, when tested in accordance with BS EN 1339, annex – method for the determination of unpolished slip resistance value, are available on request. The product is classified as having a low potential for slip i.e. a USRV of greater than 40.

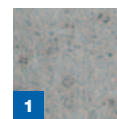
Polished slip resistance values can be provided on request.

Complementary products

Complements Andover Textured and Washed block paving plus Appalachian flag paving and Countryside Classic kerb.



Colour swatch



1. Grey

Academy flag paving

Size (mm)	600x600*	400x400	450x450*	450x450*
Thickness (mm)	50	65	50	70
Weight (kg)	41.6	23.5	24	33
Units/m ² (approx)	2.78	6.25	4.94	4.94
No. per pack	18	2x14	2x18	2x13
M ² /pack	6.5	4.5	7.3	5.3
Pack weight (T)	0.75	0.66	0.86	0.86
Colour available	Grey	Grey	Grey	Grey
Chamfered	No	No	No	No

*MTO product with a minimum order quantity of 120 packs. Academy paving comes banded and shrink wrapped to a pallet.



Q25. For NBS clauses, refer to Aggregate Industries technical services

Charcon Academy flag paving

Sustainability and local sourcing

Energy use: Aggregate Industries is at the forefront of sustainability and has committed to reduce carbon emissions by 20% by 2016 based on a 2012 base line.

Recyclable: 100% of the product can be recycled thus reducing the amount of material that is sent to landfill.

Manufacturing location: produced in the UK, with locally sourced materials under strict environmental and social legislation, for local supply.

Responsible sourcing: Aggregate Industries is the first company in the world to achieve a BES 6001:2008 Responsible Sourcing Certificate from BRE Global. Products are assessed on:

- quality management
- environmental management
- health and safety management
- greenhouse gas emissions
- minimising raw material usage
- labour practice
- biodiversity
- community engagement.

Key aggregate and recycled content

Locally sourced aggregates with small quantity of PFA cement substitute.

Generic green guide rating*

Concrete paving flags (60mm) with no sub-base - **A+ rated.**

There is currently no generic rating in the BRE Green Guide for 50mm or 65mm concrete paving flags.

Policies

Aggregate Industries' policies on the environment and community, health and safety and sustainable solutions for different product applications can be viewed on our website www.aggregate.com

Design and installation

For pavement design guidance refer to BS 7533 Parts 8. For successful installation refer to BS 7533 Part 4. For specific design, installation and maintenance guidance, please contact our technical department on 01335 372222.

Maintenance and cleaning

Aggregate Industries can supply on request advice on specific stain removal and general maintenance, suitable cleaning products, referrals to specialist cleaning companies etc.

COSHH data

Full COSHH data on the Charcon range of products is available on request. Please call the Technical helpline on 01335 372222.

Technical support

Detailed guidance and assistance with the preparation of specification of the Charcon range of Hard Landscaping products including model clauses, is available through the sales office. A free technical design service is also available - use the enquiry form or call our Technical Services.

For further information, please refer to our Technical Services on 01335 372222.

*Ratings based upon generic green guide values (2009) supplied by BRE Global Ltd, www.thegreenguide.co.uk

Hulland Ward, Ashbourne,
Derbyshire DE6 3ET

Tel: 01335 372222

Fax: 01335 370074

www.aggregate.com

