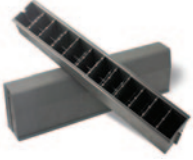


AGGREGATE INDUSTRIES

Landscaping

Charcon Durakerb



Life®

88%[†] non-primary materials



Charcon Durakerb is the revolutionary, lightweight and environmentally friendly kerbstone that complies with health and safety guidelines on the manual handling of kerbstones.

- 20% reduction in carbon emissions compared with precast concrete units in manufacture
- Manufactured using a polymer blend of which 88% is recycled material
- Lightweight design reduces laying times by up to four times that of a concrete equivalent
- At just under 6kg, Charcon Durakerb is less than one third of the manual handling limit of 20kg and mitigates repetitive strain injury
- Extremely durable offering a substantial reduction in spalling minimising remedial and maintenance costs
- Extremely easy to store and transport
- Removes the need for mechanical handling equipment, speeding up lay rates
- Can be cut with hand tools and does not create any crystalline Silica dust

- Resistance to typical chemicals and road salts used in highway construction and maintenance
- Simple interlocking feature ensures 100% alignment.

Applications

Charcon Durakerb is a cost effective kerb for all applications but particularly suited to highway applications.

Manufacturing standard

Charcon Durakerb is manufactured in accordance to ISO9001/2008.

Performance standard, As outlined within BBA-HAPAS Specification 08/H133.

Performance

Strength: The strength requirements are met to the manufacturing standard.

Slip and skid resistance: The potential for slip is 'low' in accordance with manufacturing standard.

Complementary products

Designed for use with Aggregate Industries flag and block paving ranges.



NBS Plus

Q10. For NBS clauses, refer to Aggregate Industries technical services

[†] Represents non-primary material within the complete mix design.

Charcon Durakerb

Dimensions	Straight (HB2)	Straight (BN3)	Straight (SP1)	Dropkerb LH	Dropkerb RH	External radius#	Internal radius#	External 90 angle	External 90 angle	Internal 90 angle	Internal 90 angle
Length	914	914	914	914	914	780	780	305	305	305	305
Width	125	125	125*	125	125	125	125	125	125	125	125
Depth	255	150	255	255/150	255/150	255	255	255	150	255	150
Weight kg**	5.6	3.5	5.2	4.6	4.6	4.7	4.7	4.6	2.5	4.6	2.5
Units/pack	48	90	42	56	56	48	48	40	40	40	40

* x 45 degree splayed angle

** Weights kg approximate

Available in 3m, 4m, 5m, 6m, 8m and 10m internal and external radius options

Charcon Durakerb

Sustainability and local sourcing

Energy use: Aggregate Industries is at the forefront of sustainability and has committed to reduce carbon emissions by 20% by 2016 based on a 2012 base line.

Recyclable: 100% of the product can be recycled thus reducing the amount of material that is sent to landfill.

Manufacturing location: Produced in the UK, under strict environmental and social legislation.

Responsible sourcing: Aggregate Industries is the first company in the world to achieve accreditation to the BES 6001 Framework Standard for the Responsible Sourcing of Construction Products. Aggregate Industries has achieved an 'Excellent' rating for major product groups. The BES 6001 standard assesses:

- quality management
- environmental management
- health and safety management
- a range of social and environmental issues.

Life

Life is our range of sustainable products and services. For more information please visit www.aggregate.com/life

Key materials and recycled content

Charcon Durakerb is manufactured from a composite material which includes 88% reprocessed polymers.

Generic green guide rating*

Not applicable.

Policies

Aggregate Industries' policies on the environment and community, health and safety and sustainable solutions for different product applications can be viewed on our website www.aggregate.com

Installation standard

Install in accordance with the relevant section of BS 7533. For specific guidance refer to www.aggregate.com or call the technical helpline on 01335 372222.

Maintenance and cleaning

Aggregate Industries can supply on request advice on specific stain removal and general maintenance, suitable cleaning products and referrals to specialist cleaning companies.

COSHH data

Full COSHH data on the Charcon range of products is available on request. Please call the technical helpline on 01335 372222.

Technical support

Detailed guidance and assistance with the preparation of specification of the Charcon range of hard landscaping products, including model clauses, is available through the sales office. A free technical design service is also available.

For further information, please refer to our technical services on 01335 372222.

*Ratings based upon generic green guide values (2009) supplied by BRE Global Ltd, www.thegreenguide.co.uk



Hulland Ward, Ashbourne,
Derbyshire DE6 3ET

Tel: 01335 372222

Fax: 01335 370074

www.aggregate.com



The information contained within this publication was accurate at time of production. However, Aggregate Industries reserves the right to introduce modifications or changes to detail at any time without notice. No charge is levied for this publication or advice therein, and accordingly the company, its employees and authorised agents can accept no liability whatsoever, either indirectly or directly arising from the use of its products in connection with any information or advice contained in this guide.