



# MasterKure

Making the Difference to Concrete  
Performance and Durability







# Master Builders Solutions from BASF

**Building on partnership.** Our Master Builders Solutions experts find innovative and sustainable solutions to meet your specific construction needs. Our global experience and network help you to be successful – today and tomorrow.



## Master Builders Solutions

The Master Builders Solutions brand brings all of BASF's expertise together to create chemical solutions for new construction, maintenance, repair and renovation of structures. Master Builders Solutions is built on the experience gained from more than a century in the construction industry.

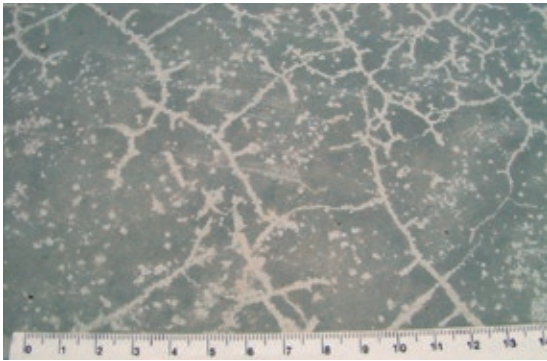
The know-how and experience of a global community of BASF construction experts form the core of Master Builders Solutions. We combine the right elements from our portfolio to solve your specific construction challenges. We collaborate across areas of expertise and regions and draw on the experience gained from countless construction projects worldwide. We leverage global BASF technologies, as well as our in-depth knowledge of local building needs, to develop innovations that help make you more successful and drive sustainable construction.

The comprehensive portfolio under the Master Builders Solutions brand encompasses concrete admixtures, cement additives, chemical solutions for underground construction, waterproofing solutions, sealants, concrete repair and protection solutions, performance grouts, performance flooring solutions.

### Environment

The best concrete design is worthless if the surface is not dense, durable and crack-free. The surface of freshly placed concrete is its weakest point and needs to be protected to achieve its full quality potential. This is especially important for modern, high performance concrete with low water- / cement ratios.

To this end, the Master Builders Solutions experts from BASF offer a comprehensive range of high-grade curing compounds. Liquid membrane-forming curing compounds for the construction industry have many advantages over traditional curing procedures such as plastic sheets or water spray. Their requirements differ depending on climatic conditions and the regulations of the country in which they are used. Furthermore, each market segment demands that curing compounds demonstrate different features depending on the needs of the application.



Early age cracks by drying shrinkage

### Requirements

Our MasterKure range meets all the different requirements of the market. The key feature of a curing compound is water retention, and the need for high water retention is shared by all users of curing compounds. Additional requirements need to be met for different applications, depending on the market segment.

A contractor needs good adhesion on vertical surfaces and expects a curing compound to be able to act as a primer system for subsequent surface finishes. The flooring market requires an easily removable curing film in order to obtain a high substrate bond for subsequent coatings. On road construction sites, the reduction of temperature increases in concrete exposed to intense sunlight is an important demand.

### Technologies

The Master Builders Solutions experts offer a comprehensive range of curing compounds. An evaporation reducer is recommended to ensure full hydration during the first few hours and to facilitate trowelling. Low emission curing compounds based on aqueous wax emulsions are extremely efficient, environmentally friendly and economical in use. White pigmented curing compounds serve the additional purpose of reducing temperature increases in concrete exposed to radiation from the sun. For high efficiency combined with early application and fast membrane formation, a product based on polymer resins dissolved in organic solvent offers the ideal solution.



MasterKure application on construction site after placing the concrete

## MasterKure selection matrix

	MasterKure 111 WB	MasterKure 114 SB	MasterKure 216 WB	MasterKure 220 WB	MasterKure 270 WB
<b>Application on:</b>					
Fresh concrete	●	●			
Matt dry concrete <sup>1)</sup>		●	●	●	●
Newly hardened/demoulded concrete		●	●	●	
<b>Water retention</b>					
Excellent		●	●		●
Good	●			●	
<b>Membrane forming</b>					
Fast	●	●			
Standard			●	●	●
<b>Key advantages</b>					
Improved surface quality		●	●	●	●
Subsequent surface finishes <sup>2)</sup>		●		●	
Reduced temperature rise in concrete					●
Evaporation reducer/trowelling aid	●				
<b>Removable by:</b>					
Shotblasting		●		●	
Pressure washing			●		●
<b>Standards &amp; Regulations</b>					
ASTM C 309-03 (US)		●			
AFNOR NF P 18-370 (FR)		●			
TL NBM-StB 09 (DE)			●		●
SILKO-directions (FIN)			●		
<b>Description</b>					
Polymer resin dispersion		●		●	
Paraffin wax emulsion			●		●
Surfactant	●				
White pigmented					●
Waterbased	●		●	●	●

1) Ensure that no free water is present and that the initial surface sheen has disappeared from the concrete surface.

2) Bond is maintained with tile adhesives, paint systems and cementitious systems.





# MasterKure

## Comprehensive Solutions for all Areas of the Concrete Industry

### Benefits

The Master Builders Solutions experts from BASF have developed an innovative range of curing compounds for all segments of the concrete industry.

- Innovative products including waterbased emulsions, pigmented curing compounds with high solar reflectance and solvent-dissolved products for immediate membrane formation in order to ensure maximum durability of the concrete.
- Superior expertise based on long-term know-how in the combined application of concrete admixtures and curing compounds.
- Value added service for specification development and optimization of concrete mix design.



Our reference in Niederfinow (Germany): Boat lift's fundaments



# Master Builders Solutions from BASF for the Construction Industry

## **MasterAir**

Complete solutions for air entrained concrete

## **MasterBrace**

Solutions for concrete strengthening

## **MasterCast**

Solutions for the manufactured concrete product industry

## **MasterCem**

Solutions for cement manufacture

## **MasterEase**

Low viscosity for high performance concrete

## **MasterEmaco**

Solutions for concrete repair

## **MasterFinish**

Solutions for formwork treatment and surface improvement

## **MasterFlow**

Solutions for precision grouting

## **MasterFiber**

Comprehensive solutions for fiber reinforced concrete

## **MasterGlenium**

Solutions for high performance concrete

## **MasterInject**

Solutions for concrete injection

## **MasterKure**

Solutions for concrete curing

## **MasterLife**

Solutions for enhanced durability

## **MasterMatrix**

Advanced rheology control for concrete

## **MasterPel**

Solutions for water tight concrete

## **MasterPolyheed**

Solutions for mid-range concrete

## **MasterPozzolith**

Solutions for water-reduced concrete

## **MasterProtect**

Solutions for concrete protection

## **MasterRheobuild**

Solutions for high strength concrete

## **MasterRoc**

Solutions for underground construction

## **MasterSeal**

Solutions for waterproofing and sealing

## **MasterSet**

Solutions for set control

## **MasterSuna**

Solutions for sand and gravel in concrete

## **MasterSure**

Solutions for extraordinary workability retention

## **MasterTop**

Solutions for industrial and commercial floors

## **Master X-Seed**

Advanced accelerator solutions for concrete

## **Ucrete**

Flooring solutions for harsh environments

## **BASF plc**

### **Construction Chemicals**

PO Box 4 ■ Earl Road ■ Cheadle Hulme

Cheadle ■ Cheshire ■ SK8 6QG ■ United Kingdom

P +44 (0)161 485 6222 ■ F +44 (0)161 488 5220

[www.master-builders-solutions.basf.co.uk](http://www.master-builders-solutions.basf.co.uk)

## **BASF Construction Solutions GmbH**

Head Office

Salzachstrasse 2–12

68199 Mannheim ■ Germany

P +49 (0)621 60 76400 ■ F +49 (0)621 60 93433

[admixtures-europe@basf.com](mailto:admixtures-europe@basf.com)

The data contained in this publication are based on our current knowledge and experience. They do not constitute the agreed contractual quality of the product and, in view of the many factors that may affect processing and application of our products, do not relieve processors from carrying out their own investigations and tests. The agreed contractual quality of the product at the time of transfer of risk is based solely on the data in the specification data sheet. Any descriptions, drawings, photographs, data, proportions, weights, etc. given in this publication may change without prior information. It is the responsibility of the recipient of our product to ensure that any proprietary rights and existing laws and legislation are observed (12/2016).