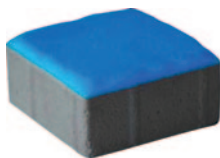


AGGREGATE INDUSTRIES

Landscaping

Charcon NighTec



An innovative photo luminous block paving that glows in the dark for up to ten hours.

- Contains photo luminous crystals which glow in the dark
- Product is charged just by sun or daylight (UV light)
- Light will emit for up to 10 hours
- No rechargeable batteries necessary
- Non toxic
- Non radio active
- Available in photo luminous colour blue-green.

Applications

NighTec® block paving is suitable for pedestrian areas. It is also suited for applications where heavier and more frequent trafficking is envisaged. Refer to our technical department for further guidance on suitability for given applications. For correct choice of block thickness to suit your application, refer to BS7533 Part 1 and 7.

Manufacturing standard

NighTec® block paving products comply with the performance levels in European Standard BS EN 1338.

Aggregate Industries fully operates an accredited Quality Assurance scheme, certified to BS EN 9001:2008 which is independently and regularly assessed by BSI (British Standards Institution). All Charcon manufacturing sites are also certified to BS EN 14001 Environmental Management Systems.

Performance with slip resistance

Unpolished slip resistance values, when tested in accordance with BS EN 1338, are available on request. All Aggregate Industries block paving is classified as having a low potential for slip i.e. a USRV of greater than 40.

Polished slip resistance values can be provided on request.

Complementary products

Designed for use with other Aggregate Industries flag and block paving ranges.



NighTec® block paving

Size (mm) 100x100

Thickness (mm)	80
Weight (kg)	1.7
Units/m ² (app.)	100
No. per pack	528
M ² /pack	5.28
Pack weight (T)	0.90
Colour Avail.	All
Chamfered	Yes (R5/2mm)
Surface	Shotblasted

Available on a made to order basis.



NBS Plus

Q24. For NBS clauses, refer to Aggregate Industries technical services

Charcon NighTec

Sustainability and local sourcing

Energy use: Aggregate Industries is at the forefront of sustainability and has committed to reduce carbon emissions by 20% by 2016 based on a 2012 base line.

Recyclable: 100% of the product can be recycled thus reducing the amount of material that is sent to landfill.

Manufacturing location: All NighTec® manufactured in Germany.

Ethical sourcing: Our suppliers are compliant to Aggregate Industries ethical trading policy which supports the principles of United Nations Global Compact and ETI Base code. Our suppliers are regularly audited to ensure continuous improvement and compliance. For any further information, please call the Technical helpline on 01335 372222.

Responsible sourcing: Aggregate Industries is the first company in the world to achieve a BES 6001:2008 Responsible Sourcing Certificate from BRE Global. Products are assessed on:

- quality management
- environmental management
- health and safety management
- greenhouse gas emissions

- minimising raw material usage
- labour practice
- biodiversity
- community engagement.

Key aggregate and recycled content

Locally sourced aggregate.

Generic green guide rating*

Concrete Block Pavers, CBP (80mm) over prepared recycled sub-base – **A**

Concrete Block Pavers, CBP (80mm) over prepared sub-base - **B**

Policies

Aggregate Industries' policies on the environment and community, health and safety and sustainable solutions for different product applications can be viewed on our website www.aggregate.com

Design and installation

For pavement design guidance refer to BS 7533 Parts 1 and 7. For successful installation refer to BS 7533 Part 3. For specific design, installation and maintenance guidance, please contact our technical department on 01335 372222.

Note: The spacers on NighTec® are different in design to other Aggregate Industries block paving and therefore cannot be interlocked with other products from the range.

Maintenance and cleaning

Aggregate Industries can supply on request advice on specific stain removal and general maintenance, suitable cleaning products and referrals to specialist cleaning companies.

COSHH data

Full COSHH data on the Charcon range of products is available on request. Please call the technical helpline on 01335 372222.

Technical support

Detailed guidance and assistance with the preparation of specification of the Charcon range of hard landscaping products, including model clauses, is available through the sales office. A free technical design service is also available.

For further information, please refer to our technical services on 01335 372222.

*Ratings based upon generic green guide values (2009) supplied by BRE Global Ltd, www.thegreenguide.co.uk

Hulland Ward, Ashbourne,
Derbyshire DE6 3ET

Tel: 01335 372222

Fax: 01335 370074

www.aggregate.com

