

Roofing

Bradstone Old Quarried Slates



Old Quarried slates have the characteristics of substantial square cut natural stone roofing.

- More than 50% non-primary material guaranteed
- Readily available, highly acceptable reconstructed stone alternative to natural stone slates
- Simple range of diminishing courses and random widths which give the finished roof the heavy stone appearance
- Also available in unique Lichen Green shade for heritage and conservation areas
- Reduced erection and timber costs compared with original natural stone material
- Slates are thrice holed and are hung using metal pegs or stout nails
- Suitable for roofs down to a minimum pitch of 25°
- Old Quarried range consists of main slates, under ridge and eaves slates with matching accessories including ridge, hip and ventilation units.

Manufacturing standard

All Aggregate Industries roofing slates comply with BS EN 490: 2004 (concrete roofing tiles and fittings – product specification).

All Aggregate Industries' products are manufactured in accordance with ISO 9001 with factory compliance to ISO 14001.

Aggregate Industries' roofing slates are moulded from hand-dressed natural stone slates by means of a specifically developed technique which reproduces the fine detail of the originals on the textured face. A range of masters is used to avoid noticeable repetition of profiles.

Performance

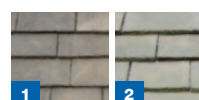
Product testing is carried out in accordance with BS EN 491:2004 (concrete roofing tiles and fittings – test methods).

Complementary products

Aggregate Industries reconstructed stone walling and cast stone architectural dressings.



Colour swatch



1. Weathered Buff
2. Lichen Green

Applications

External roofs, extensions and new builds where a natural appearance is required.

Old Quarried Slates

Length (mm)	400	700	600	525	330	600
	Under eaves	Main slates	Main slates	Main slates	Under ridge	Ridge unit
Numbers	1	2-4	5-7	8-10	11-13	n/a
Width (mm)	500	450, 525 600	400, 475 550	350, 425, 500	300, 375, 450	n/a
Set width (mm)	n/a	1575	1425	1275	1125	n/a
Sets/pack	90	22	26	30	62	80
M ² /pack	7.83	10.56	9.65	8.73	10.04	48 lin m
Colour available	All	All	All	All	All	All

Each slate is numbered and the slate number (see table above) indicates its size. The main slates (2-10) forming the bulk of the roof are supplied and laid to a double-lap in three lengths, reducing from eaves to ridge. There are three different widths in each length. Equal quantities from the full range of widths are supplied in each particular length. The length of rafter determines the number of courses in each slate length supplied.

Ridge/hip units – Available in 600mm lengths.

Ridge vent units – Available in 450mm lengths.

Gas flue ridge units - Available in 450mm lengths.

Nails and pegs – Hanging over batten: 40mm long x 4.5mm or 5mm dia. Aluminium tile pegs. Nailing through batten: 40/45mm long x 3.35 dia. Clout head nails.

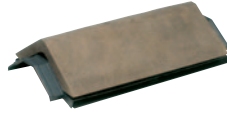
Bradstone Old Quarried Slates



Main slate



Ridge unit



Ridge vent unit



Gas flue ridge unit

Sustainability and local sourcing

Energy use: Aggregate Industries is at the forefront of sustainability and has committed to reduce carbon emissions by 20% by 2016 based on a 2012 base line.

Recyclable: 100% of the product can be recycled thus reducing the amount of material that is sent to landfill.

Manufacturing location: produced in the UK, with locally sourced materials under strict environmental and social legislation, for local supply.

Responsible sourcing: Aggregate Industries is the first company in the world to achieve a BES 6001:2008 Responsible Sourcing Certificate from BRE Global. Products are assessed on:

- quality management
- environmental management
- health and safety management
- greenhouse gas emissions
- minimising raw material usage
- labour practice
- biodiversity
- community engagement.

Key aggregate and recycled content

More than 50% of the aggregate in Old Quarried Slates is replaced with a secondary aggregate.

Aggregate Industries' roofing slates are manufactured principally from naturally occurring aggregates, ordinary Portland cement and colouring pigments, cast in moulds.

Generic green guide rating

There is currently no generic rating for reconstructed stone roofing.

Policies

Aggregate Industries' policies on the environment and community, health and safety and sustainable solutions for different product applications can be viewed on our website www.aggregate.com

Installation standard

Weight: Old Quarried slates have an average laid weight (5% m.c by volume) of approximately 117kg/m² when fixed to a standard 80mm head lap. Ridge/Hip units weigh approximately 23.5kg/m run.

Lap: Minimum head lap 80mm. Minimum side lap 75mm.

Batten size: Batten section – 50 x 25mm.

Rafter centres: Up to 600mm. When ordering batten approximately 6m run of batten to m² as laid is required.

Quantities and guides: On receipt of a firm order, Aggregate Industries will schedule the actual quantities of slates and fittings required. A battening and coursing guide for the specific roof will be supplied and this should be strictly adhered to.

Maintenance and cleaning

Aggregate Industries can supply on request advice on general maintenance. For more information on the service call our sales office on 01285 646884.

COSHH data

Full COSHH data on Aggregate Industries' products is available on request. Please call the technical helpline on 01285 646846.

Technical support

Detailed guidance and assistance with the preparation of specification and use of the Bradstone range of products is available through the sales offices. A free technical service is also available

Call our technical services on 01285 646846.

North End, Ashton Keynes,
Wiltshire SN6 6QX

Tel: 01285 646884

Tel: 01285 646891

www.aggregate.com



The information contained within this publication was accurate at time of production. However, Aggregate Industries reserves the right to introduce modifications or changes to detail at any time without notice. No charge is levied for this publication or advice therein, and accordingly the company, its employees and authorised agents can accept no liability whatsoever, either indirectly or directly arising from the use of its products in connection with any information or advice contained in this guide.