

Technical **Data** Sheet
GLAZING
VISION

Flushglaze Double Glazed

Code: 402 Glazing Vision Fixed Flushglaze Rooflight (Double Glazed)

- Intended use: Improving natural daylight
- Fixed glazing system comprising of Qualicoat approved powder coated aluminium extrusion and insulated double glazed unit.
- Designed to be installed between 3° and 70° from horizontal.
- No visible fixings. Achieved using Glazing Vision designed clip detail which obscures structural fixings leaving a completely flush external finish.
- Optional kerb trim cover designed to mask the top of upstands which may be visible through glass when viewed from above, includes detail to recess standard plaster board.
- Available in either single ‘solo’ format or modular arrangements allowing larger expanses of glass to be formed from multiple sections.
- Certificated by the Loss Prevention Certification Board.
- Secured by Design (SBD) approved (glass specifications apply)
- Performance tested by the British Board of Agreement.



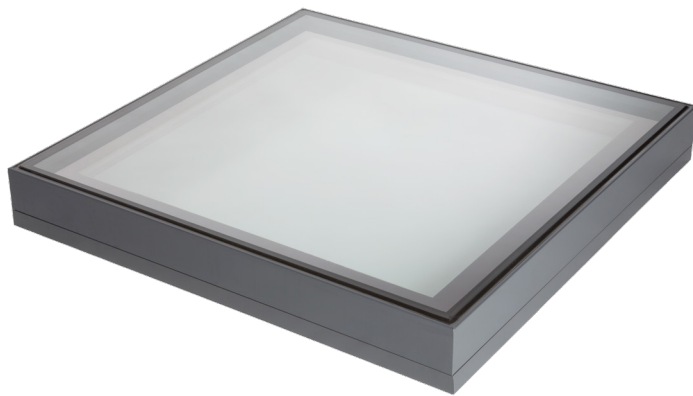
Typical Flushglaze critical kerb dimensions*

Minimum Height:	150mm	Minimum Thickness:	75mm
Minimum Span:	450mm	Maximum Span:	4200mm
Minimum Width:	450mm	Maximum Width:	4200mm**
Minimum Pitch:	3°	Maximum Pitch:	70°

- * Does not apply to Flushglaze Secure range
- ** Maximum per section for multi part units

Maximum kerb area and rooflight size is dependent on glass specification and other factors, details above are typical examples of double glazed unit with outer pane up to 8mm. If larger sizes are required we recommend contacting our technical sales team for further guidance.

Kerbs should be constructed in accordance with manufacturers recommendations.



Technical Data Sheet

GLAZING

VISION

Flushglaze Double Glazed

The fixed Flushglaze rooflight system is available in several variants:

- Solo
- Modular with silicone seals
- Modular with aluminium back to back angles
- Modular with glass fins
- Wall abutment detail - maximum three sides
- Circular
- Bespoke shapes (design fees apply)
- Available as part of Secure and Secure+ range
- Triple glazed
- Walk on specification
- Fire rated
- Eaves system
- Ridge system

Extruded aluminium framework with a combination of silicone, butyl and rubber seals.

Supplied as standard with Qualicoat approved powdercoated finish in RAL7015 Slate Grey.

Other colours from RAL colour chart available on request/dual colour option available on modular arrangements.

Secured to kerb with structural fixings and butyl adhesive.



Solo Flushglaze



Silicone Seal



Back to Back Angle



Glass Fin

Typical Double Glazed Glass Specification

- Outer: 6/8mm heat soak tested clear toughened.
- Spacer: 16mm warm edge Black silicone sealed argon filled cavity.
- Inner: 6/8mm heat soak tested clear soft low E toughened.

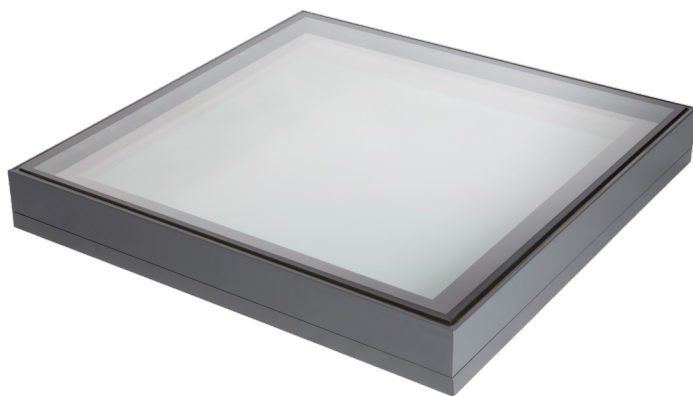
Other glass specifications are available on request which allow for larger single pane sizes or alternative performance characteristics - contact our technical sales team to discuss your requirements.

Secured by Design Glass Specification*

- Outer: 6mm heat soak tested clear low e toughened.
- Spacer: 16mm warm edge Black silicone sealed argon filled cavity.
- Inner: 8.8mm heat strengthened laminate.

*Attack tested to LPS2081 Issue 1:2015 security rating A, complies with Building Regulations Approved Document Q - Security in dwellings.

This product is also available tested to LPS2081 security rating B (higher rating) with alternative glass specification. Contact our technical sales team for details.



Technical Data Sheet

GLAZING VISION

Flushglaze Double Glazed

402-ASS-001	Double glazed FG kerb mount detail
402-ASS-004	Flushglaze wall mount detail
402-ASS-013	Pitched Flushglaze head detail
402-ASS-014	Double glazed flushglaze with glass fins
402-ASS-015	Double glazed flushglaze with back to back angles
402-ASS-021	Double glazed flushglaze with silicone joints
402-ASS-051	Flushglaze kerb detail
402-ASS-052	Circular double glazed Flushglaze kerb detail
402-ASS-058	Wall abutment detail (DGU) for pitches greater than 5 degrees
402-ASS-061	Pitched head FG detail (EPDM)



GLAZING VISION
secure secure+



LPS 2081: Issue 1
Cert/LPCB ref: 1347a

Secured by Design



Available as part of Glazing Visions Secure or Secure+ range.

The Flushglaze range has been attack tested by the Building Research Establishment (BRE) in Watford in order to comply with the Building Regulations, approved document Q: Security in dwellings.**

Testing carried out to LPS2081 Issue 1:2015 certification issued by the Loss Prevention Certification Board.

Rooflights designated 'secure' have been approved to LPS2081 security rating A and can withstand an attack on both glass, framework and structural fixings for up to one minute.

Rooflights designated 'secure+' have been approved to LPS2081 security rating B and can withstand a continued attack for up to three minutes.

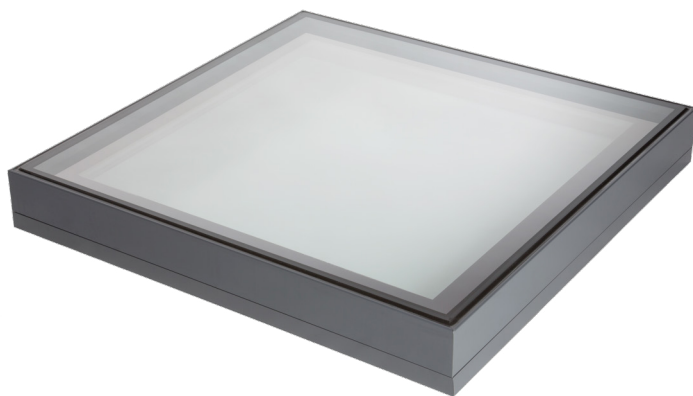
Products that have been successfully tested to this standard have been approved Secured by Design, the official UK Police flagship security initiative working with industry test houses to create and test high level security standards in response to trends in crime.

This scheme is set up to make it easy to recognise individual products prior to purchase and offer peace of mind that those products have been tested to a national standard that is recognised by Building Control.

**Excludes modular Flushglaze with glass fins and walk on Flushglaze

Selected range of Flushglaze and Flushglaze Secure products available to buy online at rooflights.com the online rooflight shop.

rooflights.com



Technical Data Sheet **GLAZING VISION**

Flushglaze Double Glazed



Independently performance tested by the British Board of Agrément. The Flushglaze rooflight had to undergo a rigorous testing regime to achieve certification that not only included weather testing but also testing for security, thermal performance, structural integrity and durability of the paint finishes and sealants used.



All in-house powder coated profiles undergo a thorough series of tests in our paint lab which has enabled us to achieve Qualicoat standards for our painting process.

We are an approved Qualicoat Applicator, licence no. 1017, and can thus pass on the full paint warranty from the manufacturers of the powder coat we use which is the Akzo Nobel Interpon D1036 or D2525 range.



Flushglaze system is available with Ritec Clearshield™

Ritec's award-winning ClearShield™ system has been specifically developed for the renovation, protection and maintenance of both new and already installed glass, making it easier to clean and keep clean whilst resisting staining and discolouration.

Tree sap, bird lime and atmospheric pollution spoil the look of unprotected glass and easily stains the surface. Cleaning the build-up of dirt is very difficult, if not impossible. Unclean glass spoils the general appearance.

Protection with ClearShield ensures that glass remains as clean and bright as the day it was installed, giving optimal clarity with the least possible effort.

Glazing Vision Limited
Saw Mills Road
Diss
Norfolk
IP22 4RG

For technical support please call
01379 658300

or email us at
technicalsales@glazingvision.co.uk

