

Walling

Bradstone Traditional



Reconstructed stone walling developed to give the authentic appearance of squared and lightly dressed natural stone.

- Perfect for adding value and visual appeal to any commercial or domestic build
- Produced in moulds originated from natural stone masters for a high quality aesthetic detail
- Produced in rational sizes for ease, speed and flexibility of construction
- Popular in brick and non-stone areas to add distinction
- Can be laid to a 450mm module achieving wall tie positions, window and door heights
- Available in a number of shades to suit regional variations
- Available with matching accessories.

Applications

The Traditional walling range is suitable for commercial, public and domestic building applications.

Manufacturing standard

The Bradstone walling range is manufactured as a wet cast reconstructed stone product and is compliant to European Standard BS EN 771-5, and complies with Assessment and Verification of Constancy of Performance (AVCP) system 4, category II masonry unit.

All Aggregate Industries' products are manufactured in accordance with ISO 9001 with factory compliance to ISO 14001.

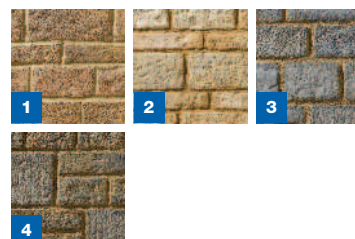
A range of masters is used to avoid noticeable repetition of profiles. Blocks in this finish are frogged.

Complementary products

Aggregate Industries' architectural cast stone dressings and reconstructed stone roofing.



Colour swatches



- 1. Iron Ham
- 2. Buff
- 3. Keinton
- 4. Weathered Cotswold

Traditional walling

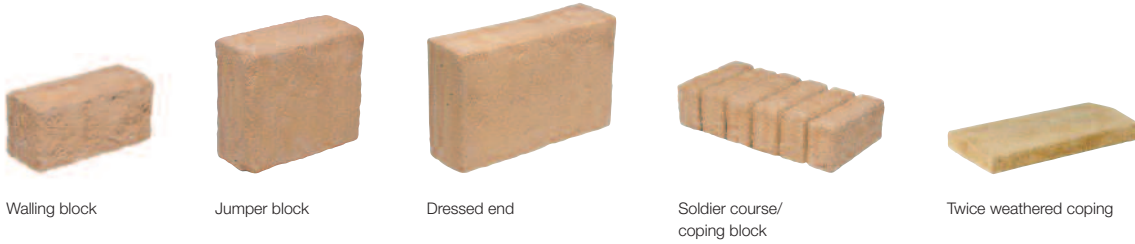
Course height (mm)	75 Walling	100 Walling	125 Walling	150 Walling	225 Jumper block	225 Jumper block	225 Dressed end	225 Dressed end	225 Soldier course or coping unit	100 Soldier course or coping unit
Lengths (mm)	200, 225, 250 275, 300, 325	200, 225, 250 275, 300, 325	200, 225, 250 275, 300, 325	200, 225, 250 275, 300, 325	250	337	225	337	450	450
Walling area m ² /per pack	7.87	7.35	7.87	6.30	6.75	6.82	n/a	n/a	n/a	n/a
Run/rise (m)	n/a	n/a	n/a	n/a	n/a	n/a	29.7	20.25	29.7	29.7
No per pallet	400	280	240	160	120	90	90	90	66	66
Pack weight (T)	1.34	1.25	1.34	1.07	1.15	1.16	1.00	1.40	1.36	1.36
Colour available	All	All	All	All	All	All	All	All	All	All

Walling blocks are supplied in single height/random length packs.
 All dimensions are coordinated sizes to include allowance for a 10mm joint.
 All blocks are 100mm on bed.
 Twice weathered coping available in 500x300x50 65mm in pallets of 30. 15m run per pallet.
 Soldier course can be used as coping block.



NBS Plus Clause: F10 295. For NBS clauses, refer to our technical services

Bradstone Traditional



Performance

Dimensional tolerance	D1	
Mean normalised strength	>20.0 N/mm ²	
Net dry density	2125 kg/m ³	
Thermal conductivity <small>(based on tabulated values from BS EN 1745)</small>	Internal	1.28 W/mK
	External	1.37 W/mK
Water vapour diffusion coeff	50/150	
Moisture movement	<0.8mm/m	
Water absorption by capillarity	<9.0g/m ² .s ^{0.5}	
Reaction to fire <small>(classified to EN 13501-1)</small>	A1	
Durability <small>In accordance with table 15, PD6697:2010</small>	Frost resistant	
Bond strength <small>(based upon tabulated values from BS EN 998-2 Annex C)</small>	0.15 N/mm ²	

Table 1 - Thermal resistance

Width (mm)	Form	Thermal resistance (m ² K/W)	
		3%	5%
100	solid	0.078	0.073

Table 2 - Unit weights

Width (mm)	Face size	Form	Unit weight* (kg)	Built weight (kg/m ²)
100	190 x 65	Solid	2.69	210
100	215 x 65	Solid	3.04	211
100	240 x 65	Solid	3.39	211
100	265 x 65	Solid	3.75	211
100	290 x 65	Solid	4.10	211
100	315 x 65	Solid	4.45	211
100	190 x 140	Solid	5.79	213
100	215 x 140	Solid	6.55	214
100	265 x 140	Solid	8.07	214
100	290 x 140	Solid	8.83	214
100	315 x 140	Solid	9.59	214
100	440 x 215	Solid	20.57	215

*based upon 5% moisture content by volume.

Table 3 - Fire resistance (hours)

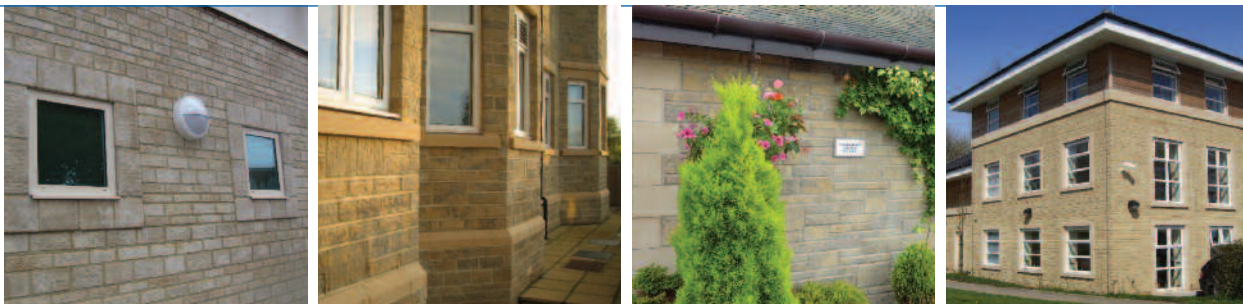
Width (mm)	Form	Load bearing	Non load bearing
100	Solid	2	2

*based upon table 14 BS5628-3 single leaf.

Table 4 - Sound insulation

Width (mm)	Form	Rw dB
100	Solid	44

*based upon mass law calculation.



Bradstone Traditional

Sustainability and local sourcing

Energy use: Aggregate Industries is at the forefront of sustainability and has committed to reduce carbon emissions by 20% by 2016 based on a 2012 base line.

Recyclable: 100% of the product can be recycled thus reducing the amount of material that is sent to landfill.

Manufacturing location: produced in the UK, with locally sourced materials under strict environmental and social legislation, for local supply.

Responsible sourcing: Aggregate Industries is the first company in the world to achieve a BES 6001:2008 Responsible Sourcing Certificate from BRE Global. Products are assessed on:

- quality management
- environmental management
- health and safety management
- greenhouse gas emissions
- minimising raw material usage
- labour practice
- biodiversity
- community engagement.

Key aggregate and recycled content

The Bradstone walling range is manufactured principally from naturally occurring aggregates, ordinary Portland cement and colouring pigments, cast in moulds.

Generic green guide rating

There is currently no generic rating for reconstructed stone walling.

Policies

Aggregate Industries' policies on the environment and community, health and safety and sustainable solutions for different product applications can be viewed on our website www.aggregate.com

Installation standard

Health and safety: Size for size Aggregate Industries walling is heavier than most facing bricks, making it more comparable with solid wire cut bricks. Though it is generally lighter than limestone and sandstone masonry, due allowance for the weight of the larger blocks should be made when moving, handling and working with the material on site. Special care should be taken when handling and lifting heavy fittings.

Maintenance and cleaning

Aggregate Industries can supply on request advice on general maintenance. Aggregate Industries also offer an anti-graffiti coating service which will protect solid, absorbent and painted surfaces against graffiti attack and other contamination. For more information on the service call our sales office on 01285 646884.

COSHH data

Full COSHH data on the Bradstone walling range of products is available on request. Please call the technical helpline on 01285 646808.

Technical support

Detailed guidance and assistance with the preparation of specification and use of our range of products is available through the sales offices. A free technical service is also available.

Call our technical services on 01285 646808.

North End, Ashton Keynes,
Wiltshire SN6 6QX

Tel: 01285 646884

Fax: 01285 646891

www.aggregate.com

