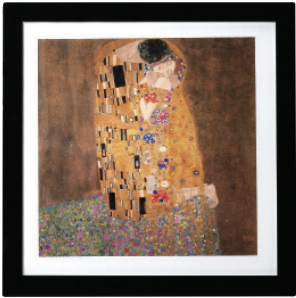
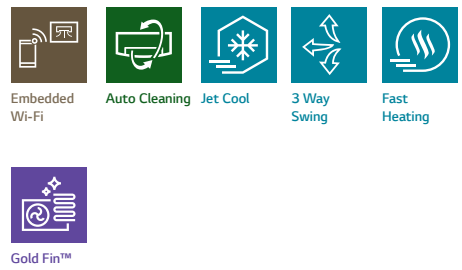


ARTCOOL GALLERY

NEW



LG participates in the ECP programme for EUROVENT AC program. Check ongoing validity of certification: www.eurovent-certification.com



• Single Combination

INDOOR				A09F* NSF	A12F* NSF
Capacity	Cooling	Min / Rated / Max	W	890 / 2,500 / 3,700	890 / 3,500 / 4,040
	Heating	Min / Rated / Max	W	890 / 3,300 / 4,100	890 / 4,000 / 5,100
	Heating -7°C	Rated	W	3200	3500
Power Input	Cooling	Rated	W	658	1050
	Heating	Rated	W	831	1108
EER			W / W	3.8	3.33
S.E.E.R.				6.8	6.6
P design C			kW	2.5	3.5
COP			W / W	3.97	3.61
S.C.O.P. (Average / Warmer)				4.0 / 4.6	4.0 / 4.6
P design H (Average / Warmer)			kW	2.7 / 1.5	2.7 / 1.5
Energy Label (A+++ to D Scale)	Cooling			A++	A++
	Heating (Average / Warmer)			A+ / A++	A+ / A++
Annual Energy Consumption	Cooling		kWh	129	186
	Heating (Average / Warmer)		kWh	945 / 457	945 / 457
Sound Pressure	Cooling	S / L / M / H	dB(A)	27 / 35 / 39 / 45	27 / 35 / 39 / 45
	Heating	L / M / H	dB(A)	35 / 39 / 45	35 / 39 / 45
Sound Power	Cooling	Power	dB(A)	60	60
		S / L / M / H	m ³ / min	- / 6.0 / 7.6 / 9.0	- / 6.0 / 7.6 / 9.0
Air Flow Rate	Max (Power)		m ³ / min	10.0	10.0
	Heating	L / M / H	m ³ / min	6.1 / 7.8 / 9.3	6.1 / 7.8 / 9.3
Dehumidification Rate			l/h	1.1	1.3
		Rated	A	3.2	4.9
Running Current	Cooling	Max	A	6.0	6.0
		Rated	A	4.1	5.1
	Heating	Max	A	7.0	7.0
		Rated	A	3.2 / 4.1	4.9 / 5.1
Starting Current	Cooling / Heating	Rated	A	3.2 / 4.1	4.9 / 5.1
Power Supply			∅, V, Hz	1, 220-240, 50	1, 220-240, 50
Circuit Breaker			A	15	15
Power Supply Cable			N x mm ²	3 x 1.0	3 x 1.0
Power & Transmission Cable			N x mm ²	4 x 1.0 (Including Earth)	4 x 1.0 (Including Earth)
Dimension			mm	600 x 600 x 146	600 x 600 x 146
Net Weight			kg	14.4	14.4
Fan Motor Output			W	16.7	16.7

OUTDOOR				A09F* UL2	A12F* UL2
Operation Range	Cooling	Min/Max	°CDB	-10 / 48	-10 / 48
	Heating	Min/Max	°CDB	-10 / 24	-10 / 24
Sound Pressure	Cooling	High	dB(A)	51	51
	Heating	High	dB(A)	51	51
Sound Power	Cooling	High	dB(A)	65	65
		High	m ³ / min	35	35
Air Flow Rate	Length(Odu / ldu)	Min / Max	m	3 / 20	3 / 20
	Elevation(Odu / ldu)	Max	m	10	10
Piping Connection	Liquid	OD (Outside)	mm(inch)	∅ 6.35 (1/4)	∅ 6.35 (1/4)
	Gas	OD (Outside)	mm(inch)	∅ 9.52 (3/8)	∅ 9.52 (3/8)
Drain Hose Size		OD (Outside)	mm(inch)	21.5 (27/32)	21.5 (27/32)
	Type			R32	R32
Refrigerant	Charge at 7.5m		kg	0.800	0.800
	Additional charge		t-CO ₂ eq	0.540	0.540
	GWP		g/m	20	20
				675	675
Fan Motor Output			W	43	43
Compressor Type				Twin Rotary	Twin Rotary
Net Weight			kg	34.4	34.4
Dimension			mm	770 x 545 x 288	770 x 545 x 288

∩ These products contains Fluorinated greenhouse gases (R32), GWP : Global warming potential of R32 is 675 (t-CO₂eq : F-gas(kg)*GWP/1000)
 ∩ S : Sleep / L : Low / M : Medium / H : High
 ∩ Specification, design and feature are subject to change without prior notice.

ARTCOOL MIRROR



LG participates in the ECP programme for EUROVENT AC program. Check ongoing validity of certification: www.eurovent-certification.com

Embedded Wi-Fi	Smart Diagnosis	Active Energy Control	Energy Display	Plasmaster Ionizer ^{PLUS}	Plasmaster Auto Cleaning		
Jet Cool	4 Way Swing	Fast Heating	Gold Fin™	Comfort Air	Low Noise 19dB (9k, 12k)	Silent Mode	Quick & Easy Installation

• Single Combination

INDOOR				AC09B* NSJ	AC12B* NSJ	AC18B* NSK	AC24B* NSK
Capacity	Cooling	Min / Rated / Max	W	890 / 2,500 / 3,700	890 / 3,500 / 4,040	900 / 5,000 / 5,500	900 / 6,600 / 7,420
	Heating	Min / Rated / Max	W	890 / 3,300 / 4,100	890 / 4,000 / 5,100	900 / 5,800 / 6,400	900 / 7,500 / 8,640
	Heating -7°C	Rated	W	2,600	3,000	4,200	6,000
Power Input	Cooling	Rated	W	656	1,080	1,562	2,164
	Heating	Rated	W	800	1,050	1,611	2,238
EER			W / W	3.81	3.24	3.20	3.05
S.E.E.R.				7.0	6.6	7.0	6.9
P design C			kW	2.5	3.5	5.0	6.6
COP			W / W	4.13	3.81	3.60	3.35
S.C.O.P. (Average / Warmer)				4.0 / 4.9	4.0 / 4.9	4.3 / 5.3	4.3 / 5.3
P design H (Average / Warmer)			kW	2.5 / 1.3	2.5 / 1.3	3.9 / 2.1	5.0 / 2.7
Energy Label (A+++ to D Scale)	Cooling			A++	A++	A++	A++
	Heating (Average / Warmer)			A+ / A++	A+ / A++	A+ / A+++	A+ / A+++
Annual Energy Consumption	Cooling		kWh	125	186	250	335
	Heating (Average / Warmer)		kWh	875 / 371	875 / 371	1270 / 555	1628 / 713
Sound Pressure	Cooling	S / L / M / H	dB(A)	19 / 27 / 35 / 41	19 / 27 / 35 / 41	31 / 34 / 39 / 44	31 / 34 / 42 / 47
	Heating	L / M / H	dB(A)	27 / 35 / 41	27 / 35 / 41	34 / 39 / 44	34 / 42 / 47
Sound Power	Cooling		dB(A)	59	59	60	65
		S / L / M / H	m ³ / min	3.0 / 4.2 / 7.5 / 10.0	3.0 / 4.2 / 7.5 / 10.0	8.0 / 10.5 / 13.0 / 14.5	8.0 / 10.5 / 13.1 / 16.1
Air Flow Rate	Heating	Max (Power)	m ³ / min	12.5	12.5	15.5	20.0
		L / M / H	m ³ / min	5.6 / 7.2 / 10.0	5.6 / 7.2 / 10.0	11.0 / 13.5 / 16.0	10.5 / 13.1 / 16.1
Dehumidification Rate			l/h	1.1	1.3	1.8	2.5
		Rated	A	3.3	4.7	6.9	9.8
Running Current	Cooling	Max	A	6.0	6.0	9.0	14.0
		Rated	A	4.0	4.7	7.1	10.4
	Heating	Max	A	7.0	7.0	9.5	14.0
Starting Current	Cooling / Heating	Rated	A	3.3 / 4.0	4.7 / 4.7	6.9 / 7.1	9.8 / 10.4
Power Supply			∅ V, Hz	1, 220-240, 50	1, 220-240, 50	1, 220-240, 50	1, 220-240, 50
Circuit Breaker			A	15	15	20	25
Power Supply Cable			N x mm ²	3 x 1.0	3 x 1.0	3 x 1.5	3 x 2.5
				4 x 1.0	4 x 1.0	4 x 1.0	4 x 1.0
Power & Transmission Cable			N x mm ²	(Including Earth)	(Including Earth)	(Including Earth)	(Including Earth)
				837 x 308 x 192	837 x 308 x 192	998 x 345 x 212	998 x 345 x 212
Dimension			mm	837 x 308 x 192	837 x 308 x 192	998 x 345 x 212	998 x 345 x 212
Net Weight			kg	9.9	9.9	12.8	13.5
Fan Motor Output			W	30	30	30	60

OUTDOOR				AC09B* UA3	AC12B* UA3	AC18B* UL2	AC24B* U24
Operation Range	Cooling	Min/Max	°CDB	-10 / 48	-10 / 48	-15 / 48	-15 / 48
	Heating	Min/Max	°CDB	-10 / 24	-10 / 24	-10 / 24	-10 / 24
Sound Pressure	Cooling	High	dB(A)	48	48	53	54
	Heating	High	dB(A)	50	50	55	57
Sound Power	Cooling	High	dB(A)	65	65	65	70
		High	m ³ / min	27	27	35	50
Piping	Length(Odu / ldu)	Min / Max	m	3 / 15	3 / 15	3 / 20	3 / 30
	Elevation(Odu / ldu)	Max	m	7	7	10	15
Piping Connection	Liquid	OD (Outside)	mm (inch)	∅ 6.35 (1/4)	∅ 6.35 (1/4)	∅ 6.35 (1/4)	∅ 6.35 (1/4)
	Gas	OD (Outside)	mm (inch)	∅ 9.52 (3/8)	∅ 9.52 (3/8)	∅ 12.7 (1/2)	∅ 15.88 (5/8)
Drain Hose Size		OD (Outside)	mm (inch)	21.5 (27/32)	21.5 (27/32)	21.5 (0.85)	21.5 (0.85)
	Type			R32	R32	R32	R32
Refrigerant	Charge at 7.5m		kg	0.700	0.700	1.000	1.100
			t-CO ₂ eq	0.473	0.473	0.675	0.743
	Additional charge		g/m	20	20	20	20
Fan Motor Output	GWP			675	675	675	675
			W	43	43	43	85
Compressor Type				Twin Rotary	Twin Rotary	Twin Rotary	Twin Rotary
Net Weight			kg	26.0	26.0	35.2	46.4
Dimension			mm	717 x 495 x 230	717 x 495 x 230	770 x 545 x 288	870 x 650 x 330

These products contains Fluorinated greenhouse gases (R32), GWP : Global warming potential of R32 is 675 (t-CO₂eq : F-gas(kg)*GWP/1000)
 S : Sleep / L : Low / M : Medium / H : High
 Specification, design and feature are subject to change without prior notice.



LG participates in the ECP programme for EUROVENT AC program. Check ongoing validity of certification: www.eurovent-certification.com



Embedded Wi-Fi



Smart Diagnosis



Active Energy Control



Energy Display



Plasmaster Ionizer^{PLUS}



Plasmaster⁺ Auto Cleaning



Jet Cool



4 Way Swing



Fast Heating



Gold Fin™



Comfort Air



Low Noise 19dB (9k, 12k)



Silent Mode



Quick & Easy Installation

• Single Combination

INDOOR				DC09R* NSJ	DC12R* NSJ	DC18R* NSK	DC24R* NSK
Capacity	Cooling	Min / Rated / Max	W	890 / 2,500 / 3,700	890 / 3,500 / 4,040	900 / 5,000 / 5,500	900 / 6,600 / 7,420
	Heating	Min / Rated / Max	W	890 / 3,300 / 4,100	890 / 4,000 / 5,100	900 / 5,800 / 6,400	900 / 7,500 / 8,640
	Heating -7°C	Rated	W	2,600	3,000	4,200	6,000
Power Input	Cooling	Rated	W	656	1,080	1,562	2,164
	Heating	Rated	W	800	1,050	1,611	2,238
EER			W/W	3.81	3.24	3.20	3.05
S.E.E.R.				7.0	6.6	7.0	6.9
P design C			kW	2.5	3.5	5.0	6.6
COP			W/W	4.13	3.81	3.60	3.35
S.C.O.P. (Average / Warmer)				4.0 / 4.9	4.0 / 4.9	4.3 / 5.3	4.3 / 5.3
P design H (Average / Warmer)			kW	2.5 / 1.3	2.5 / 1.3	3.9 / 2.1	5.0 / 2.7
Energy Label (A+++ to D Scale)	Cooling			A++	A++	A++	A++
	Heating (Average / Warmer)			A+ / A++	A+ / A++	A+ / A+++	A+ / A+++
Annual Energy Consumption	Cooling		kWh	125	186	250	335
	Heating (Average / Warmer)		kWh	875 / 371	875 / 371	1,270 / 555	1,628 / 713
Sound Pressure	Cooling	S / L / M / H	dB(A)	19 / 27 / 35 / 41	19 / 27 / 35 / 41	31 / 34 / 39 / 44	31 / 34 / 42 / 47
	Heating	L / M / H	dB(A)	27 / 35 / 41	27 / 35 / 41	34 / 39 / 44	34 / 42 / 47
Sound Power	Cooling	Power	dB(A)	59	59	60	65
	Heating	Power	dB(A)	59	59	60	65
Air Flow Rate	Cooling	S / L / M / H	m ³ /min	30 / 4.2 / 7.5 / 10.0	30 / 4.2 / 7.5 / 10.0	80 / 10.5 / 130 / 145	80 / 10.5 / 131 / 161
		Max (Power)	m ³ /min	12.5	12.5	15.5	20.0
	Heating	L / M / H	m ³ /min	5.6 / 7.2 / 10.0	5.6 / 7.2 / 10.0	11.0 / 13.5 / 16.0	10.5 / 13.1 / 16.1
Dehumidification Rate	Cooling	Rated	l/h	1.1	1.3	1.8	2.5
	Max	A	A	3.3	4.7	6.9	9.8
Running Current	Cooling	Rated	A	6.0	6.0	9.0	14.0
		Max	A	4.0	4.7	7.1	10.4
	Heating	Rated	A	7.0	7.0	9.5	14.0
Starting Current	Cooling / Heating	Rated	A	3.3 / 4.0	4.7 / 4.7	6.9 / 7.1	9.8 / 10.4
Power Supply			Ø, V/Hz	1, 220-240, 50	1, 220-240, 50	1, 220-240, 50	1, 220-240, 50
Circuit Breaker			A	15	15	20	25
Power Supply Cable			N x mm ²	3 x 1.0	3 x 1.0	3 x 1.5	3 x 2.5
Power & Transmission Cable			N x mm ²	4 x 1.0	4 x 1.0	4 x 1.0 (Including Earth)	4 x 1.0 (Including Earth)
Dimension			mm	837 x 308 x 189	837 x 308 x 189	998 x 345 x 210	998 x 345 x 210
Net Weight			kg	9.1	9.1	11.9	12.7
Fan Motor Output			W	30	30	30	60

OUTDOOR				DC09R* UA3	DC12R* UA3	DC18R* UL2	DC24R* U24
Operation Range	Cooling	Min/Max	°CDB	-10 / 48	-10 / 48	-15 / 48	-15 / 48
	Heating	Min/Max	°CDB	-10 / 24	-10 / 24	-10 / 24	-10 / 24
Sound Pressure	Cooling	High	dB(A)	48	48	53	54
	Heating	High	dB(A)	50	50	55	57
Sound Power	Cooling	High	dB(A)	65	65	65	70
	Heating	High	dB(A)	65	65	65	70
Air Flow Rate	Cooling	High	m ³ /min	27	27	35	50
	Heating	High	m ³ /min	27	27	35	50
Piping	Length(Odu/Idu)	Min/Max	m	3 / 15	3 / 15	3 / 20	3 / 30
	Elevation(Odu/Idu)	Max	m	7	7	10	15
Piping Connection	Liquid	OD (Outside)	mm (inch)	Ø 6.35 (1/4)	Ø 6.35 (1/4)	Ø 6.35 (1/4)	Ø 6.35 (1/4)
	Gas	OD (Outside)	mm (inch)	Ø 9.52 (3/8)	Ø 9.52 (3/8)	Ø 12.7 (1/2)	Ø 15.88 (5/8)
Drain Hose Size	Cooling	OD (Outside)	mm (inch)	27 / 32	27 / 32	21.5 (0.85)	21.5 (0.85)
	Heating	OD (Outside)	mm (inch)	27 / 32	27 / 32	21.5 (0.85)	21.5 (0.85)
Refrigerant	Type		kg	R32	R32	R32	R32
	Charge at 7.5m		kg	0.700	0.700	1.000	1.100
	t-CO ₂ eq		kg	0.473	0.473	0.675	0.743
	Additional charge		g/m	20	20	20	20
Fan Motor Output	Cooling		W	675	675	675	675
	Heating		W	675	675	675	675
Compressor Type				43	43	43	85
Net Weight			kg	Twin Rotary	Twin Rotary	Twin Rotary	Twin Rotary
Dimension	Cooling		mm	25.1	25.1	34.4	46.0
	Heating		mm	717 x 495 x 230	717 x 495 x 230	770 x 545 x 288	870 x 650 x 330

ⓘ These products contains Fluorinated greenhouse gases (R32), GWP : Global warming potential of R32 is 675 (t-CO₂eq : F-gas(kg)*GWP/1000)
 ⓘ S : Sleep / L : Low / M : Medium / H : High
 ⓘ Specification, design and feature are subject to change without prior notice.

STANDARD PLUS



LG participates in the ECP programme for EUROVENT AC program.
Check ongoing validity of certification : www.eurovent-certification.com



• Single Combination

INDOOR				S09E* NSJ	S12E* NSJ	S18ET NSK	S24ET NSK
Capacity	Cooling	Min / Rated / Max	W	890 / 2,500 / 3,700	890 / 3,500 / 4,040	900 / 5,000 / 5,500	900 / 6,600 / 7,420
	Heating	Min / Rated / Max	W	890 / 3,300 / 4,100	890 / 4,000 / 5,100	900 / 5,800 / 6,400	900 / 7,500 / 8,640
	Heating -7°C	Rated	W	2,600	3,000	4,200	6,000
Power Input	Cooling	Rated	W	656	1,080	1,562	2,164
	Heating	Rated	W	800	1,050	1,611	2,238
EER			W / W	3.81	3.24	3.20	3.05
S.E.E.R.				7.0	6.6	7.0	6.9
P design C			kW	2.5	3.5	5.0	6.6
COP			W / W	4.13	3.81	3.60	3.35
S.C.O.P. (Average / Warmer)				4.0 / 4.9	4.0 / 4.9	4.3 / 5.3	4.3 / 5.3
P design H (Average / Warmer)			kW	2.5 / 1.3	2.5 / 1.3	3.9 / 2.1	5.0 / 2.7
Energy Label (A+++ to D Scale)	Cooling			A++	A++	A++	A++
	Heating (Average / Warmer)			A+ / A++	A+ / A++	A+ / A+++	A+ / A+++
Annual Energy Consumption	Cooling		kWh	125	186	250	335
	Heating (Average / Warmer)		kWh	875 / 371	875 / 371	1,270 / 555	1,628 / 713
Sound Pressure	Cooling	S / L / M / H	dB(A)	19 / 27 / 35 / 41	19 / 27 / 35 / 41	31 / 34 / 39 / 44	31 / 34 / 42 / 47
	Heating	L / M / H	dB(A)	27 / 35 / 41	27 / 35 / 41	34 / 39 / 44	34 / 42 / 47
Sound Power	Cooling	Power	dB(A)	59	59	60	65
	Cooling	S / L / M / H	m ³ / min	3.0	3.0	8.0	8.0
Air Flow Rate	Heating	Max (Power)	m ³ / min	12.5	12.5	15.5	18.3
	Heating	L / M / H	m ³ / min	5.6 / 7.2 / 10.0	5.6 / 7.2 / 10.0	11.0 / 13.5 / 16.0	11.0 / 14.3 / 17.6
Dehumidification Rate			l/h	1.1	1.3	1.8	2.5
	Cooling	Rated	A	3.3	4.7	6.9	9.8
Running Current		Max	A	6.0	6.0	9.0	14.0
		Rated	A	4.0	4.7	7.1	10.0
	Heating	Max	A	7.0	7.0	9.5	14.0
Starting Current	Cooling / Heating	Rated	A	3.3 / 4.0	4.7 / 4.7	6.9 / 7.1	9.8 / 10.0
Power Supply			∅, V, Hz	1, 220-240, 50	1, 220-240, 50	1, 220-240, 50	1, 220-240, 50
Circuit Breaker			A	15	15	20	25
Power Supply Cable			N x mm ²	3 x 1.0	3 x 1.0	3 x 1.5	3 x 2.5
Power & Transmission Cable			N x mm ²	4 x 1.0	4 x 1.0	4 x 1.0	4 x 1.0
Dimension			mm	837 x 308 x 189	837 x 308 x 189	998 x 345 x 210	998 x 345 x 210
Net Weight			kg	8.7	8.7	11.9	12.7
Fan Motor Output			W	30	30	30	58

OUTDOOR				S09E* UA3	S12E* UA3	S18E* UL2	S24E* U24
Operation Range	Cooling	Min/Max	°CDB	-10 / 48	-10 / 48	-15 / 48	-15 / 48
	Heating	Min/Max	°CDB	-10 / 24	-10 / 24	-10 / 24	-10 / 24
Sound Pressure	Cooling	High	dB(A)	48	48	53	54
	Heating	High	dB(A)	50	50	55	57
Sound Power	Cooling	High	dB(A)	65	65	65	70
	Heating	High	dB(A)	27	27	35	49
Air Flow Rate	Length (Odu / Idu)	Min / Max	m	3 / 15	3 / 15	3 / 20	3 / 30
	Elevation (Odu / Idu)	Max	m	7	7	10	15
Piping Connection	Liquid	OD (Outside)	mm (inch)	∅ 6.35 (1/4)	6.35 (1/4)	6.35 (1/4)	6.35 (1/4)
	Gas	OD (Outside)	mm (inch)	∅ 9.52 (3/8)	9.52 (3/8)	12.7 (1/2)	15.88 (5/8)
Drain Hose Size		OD (Outside)	mm (inch)	27 / 32	27 / 32	27 / 32	27 / 32
	Type			R32	R32	R32	R32
Refrigerant	Charge at 7.5m		kg	0.700	0.700	1.000	1.100
	Additional charge		t-CO ₂ eq	0.473	0.473	0.675	0.743
	GWP		g/m	20	20	20	20
Fan Motor Output			W	675	675	675	675
Compressor Type				43	43	43	85
Net Weight			kg	25.1	25.1	34.4	46.0
Dimension			mm	717 x 495 x 230	717 x 495 x 230	770 x 545 x 288	870 x 650 x 330

⌘ These products contains Fluorinated greenhouse gases (R32), GWP : Global warming potential of R32 is 675 (t-CO₂eq : F-gas(kg)*GWP/1000)
 ⌘ S : Sleep / L : Low / M : Medium / H : High
 ⌘ Specification, design and feature are subject to change without prior notice.