

Watertight™



Watertight™ is a versatile range of specialised concretes designed to protect a structure from water ingress or to retain water within a structure. When compared to traditional methods of achieving watertight structures, Watertight™ offers contractors and specifiers the competitive edge in both cost and time savings.

Watertight provides a fast track solution over traditional methods of construction such as external membranes or cavity drainage. With Watertight, water is prevented from flowing into or from a structure and eliminates the need for the time consuming installation of complicated and detailed jointing.

Designed by Aggregate Industries the Watertight range encompasses the full scope of admixture driven solutions and upon request can be supplied with a manufacturers warranty giving you the confidence to specify and use a unique product.

When correctly specified and constructed Watertight:

- Is fully compliant with BS 8102 type B construction
- Reduces installation time
- Is not sensitive to weather conditions unlike membrane solutions
- Available as a pumpable or flowing mix in slump and flow grades
- Reduces installation cost.

Applications

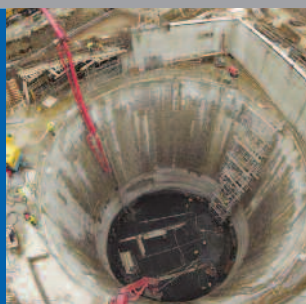
Watertight finds applications wherever a significant hydraulic gradient is found.

Watertight is available in concrete grades suitable for applications ranging from service reservoirs, water treatment structures, car parks, domestic basements and swimming pools. Aggregate Industries will tailor Watertight to the particular challenges of your contract and provide detailed advice and support during the initial use of the product.

Manufacturing Standard

Watertight conforms with the requirement of European standard BS EN 206-1:2001 Concrete – Part1: Specification, performance, production and conformity and with the requirements of BS8500-1; BS 8500-2 2006 and BS 8102.

As with all Aggregate Industries' products Watertight is manufactured under independently monitored third party quality assurance schemes in accordance with ISO 9001 and with factory environmental compliance to ISO 14001.



Typical performance and technical data

Available in strength classes from:	C30 to C70
Flexural strength from:	5 N/mm ²
High early strength - by request:	>30 N/mm ² at 24 hours

Installation standard

The Watertight range is intended to be placed by conventional skip, pump or direct placement methods.

Available in consistence classes S3 - S4 and F1 – F4.

Full compaction will be achieved by the correct application of standard vibrating equipment, using other methods may not allow the products to achieve their full potential and should be evaluated with our assistance before use.

Curing

As with any structural concrete it is essential to cure Watertight correctly, any failure to do so will result in some loss of performance and may invalidate any warranty offered.

Whilst Watertight exhibits a superior resistance to the drying effects of wind and sun conventional good practice should be followed in the prevention of plastic shrinkage cracking.

Immediately the finishing operation is complete final curing should commence and may be accomplished by the use of any recognised high efficiency curing membrane or method.

Curing should continue for the period specified.

Sustainability and local sourcing

Responsible sourcing: Aggregate Industries is the first company in the world to achieve a BES 6001:2008 Responsible Sourcing Certificate from BRE Global. Products are assessed on:

- quality management
- environmental management
- health and safety management
- greenhouse gas emissions
- minimising raw material usage
- labour practice
- biodiversity
- community engagement.

Energy use: Aggregate Industries is at the forefront of sustainability and has committed to reduce carbon emissions by 20% by 2016.

Manufacturing location: produced in the UK, with locally sourced materials under strict environmental and social legislation, for local supply.

Recyclable: the product has a life expectancy of 60 or more years and is fully recyclable.

Key aggregate and recycled content

This product may be formulated to be substantially better for the environment than the equivalent traditional concrete. Aggregate Industries are unique in being able to quantify this difference. Wherever available, a recycled or secondary aggregate may be selected to achieve a reduced environmental impact and increased green guide rating.

The raw materials used in the manufacture of the binders are obtained from processes where they form from a co-product.

Policies

Aggregate Industries' policies on the environment and community, health and safety and sustainable solutions for different product applications can be viewed on our website www.aggregate.com

COSHH data

Full COSHH data on the concrete range of products is available on request.

Technical support

Detailed guidance and assistance with the preparation of specifications and use of concrete products is available through the sales offices. A free technical service is also available.

Call our concrete technical services at the nearest sales location to your contract.

Aggregate Industries - Head Office
Bardon Hill, Bardon Road, Coalville,
Leicestershire LE67 1TL

Tel: 01530 510066
Fax: 01530 512198

London Concrete
London House, 77 Boston Manor Road,
Brentford, Middlesex TW8 9JQ

Tel: 0208 380 7300
Fax: 0208 380 7301

Southern region
South West region
South East region
Northern region
Central Scotland
Northern Scotland

www.aggregate.com

Tel: 01283 712677 Fax: 01283 716598
Tel: 01752 485201 Fax: 01752 408378
Tel: 01268 769696 Fax: 01268 796097
Tel: 01524 736933 Fax: 01524 736665
Tel: 01698 870947 Fax: 01698 870637
Tel: 01467 644200 Fax: 01467 644250



The information contained within this publication was accurate at time of production. However, Aggregate Industries reserves the right to introduce modifications or changes to detail at any time without notice. No charge is levied for this publication or advice therein, and accordingly the company, its employees and authorised agents can accept no liability whatsoever, either indirectly or directly arising from the use of its products in connection with any information or advice contained in this guide.